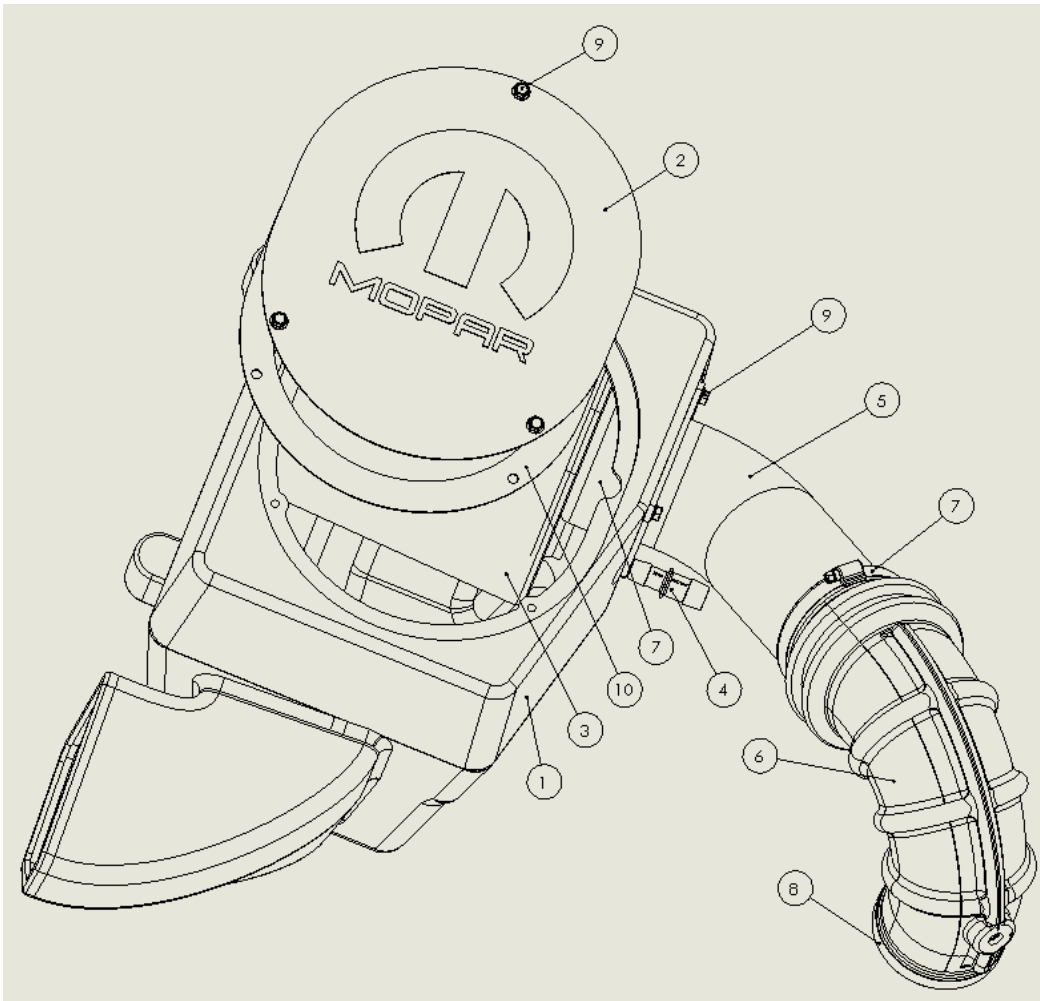




**INSTALLATION INSTRUCTIONS**  
**COLD AIR INTAKE KIT**  
**2009-2014 RAM 5.7L V8**  
PART NUMBER 77070023AC

Bill of Materials for 77070023AC

| No. | Qty. | Part No.  | Description                      |
|-----|------|-----------|----------------------------------|
| 1   | 1    | 9-0421    | MOPAR Cold Air Box               |
| 2   | 1    | 010142M   | MOPAR Cold Air Box Closure Panel |
| 3   | 1    | MP-M-1002 | Air Filter Assembly              |
| 4   | 1    | 08512     | Adaptor Fitting 3/4" to 5/8"     |
| 5   | 1    | 27370     | Air Filter Adaptor Tube          |
| 6   | 1    | 08658     | MOPAR Air Intake Hose            |
| 7   | 2    | 9464      | Hose Clamp #64                   |
| 8   | 1    | 9456      | Hose Clamp #56                   |
| 9   | 7    | 08373     | M6 Bolt                          |
| 10  | 1    | 346001    | Seal, Closing Panel              |
| 11  | 1    | K6857274  | Instructions (Not shown)         |





**IMPORTANT:**

This kit includes a high-performance DRYFLOW Air Filter.

**DO NOT APPLY ANY OIL TO THIS FILTER!**

See Step 6 for cleaning instructions.

Read and understand these instructions **BEFORE** attempting to install this product.

**1) Getting Started**

- a) If engine has run within the past two hours, open the hood and allow it to cool down.
- b) Make sure the vehicle is parked on a level surface.
- c) Set the parking brake.
- d) Open the Cold Air Intake Kit package and make sure all parts are included.

**2) Removal of the stock intake system**



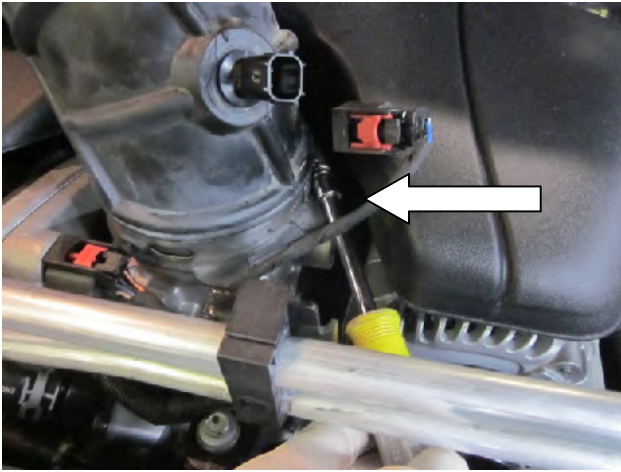
a) The stock air intake system should look like this.



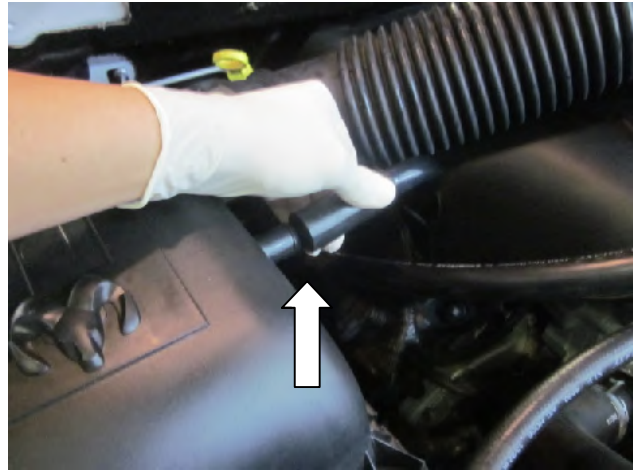
b) Disconnect the IAT (intake air temperature) sensor electrical connector from the sensor. Leave the sensor in place.



**INSTALLATION INSTRUCTIONS**  
**COLD AIR INTAKE KIT**  
**2009-2014 RAM 5.7L V8**  
PART NUMBER 77070023AC



**c)** Loosen the hose clamp securing the factory air intake hose to the throttle body.



**d)** Disconnect engine crank case vent hose at the air box.



**e)** Detach the factory air intake hose from the throttle body.



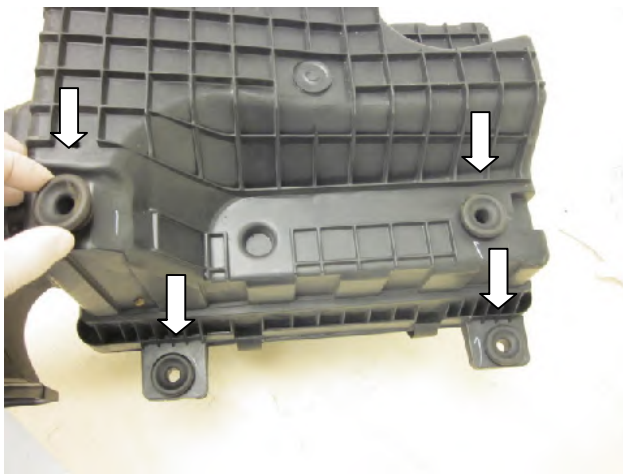
**f)** Pull up on the air box to disengage it from the locator pins and remove it from the engine compartment along with the intake hose.



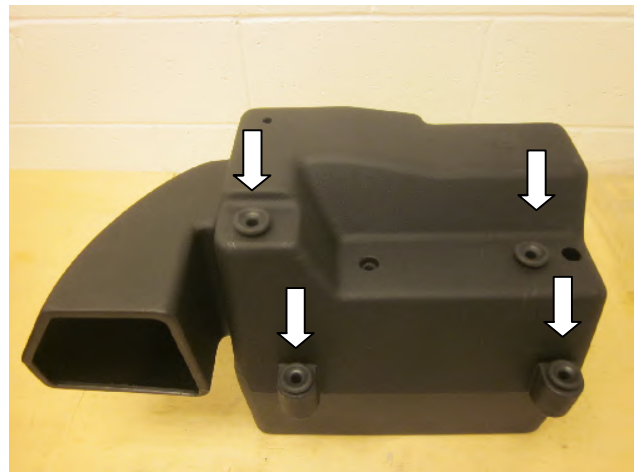
**INSTALLATION INSTRUCTIONS  
COLD AIR INTAKE KIT  
2009-2014 RAM 5.7L V8  
PART NUMBER 77070023AC**

### 3) Installation of MOPAR Cold Air Intake System

NOTE: When installing the MOPAR Cold Air Intake System, DO NOT completely tighten the hose clamps or mounting hardware until instructed to do so.



**a)** Remove the 4 rubber grommets on the bottom of the factory air box.



**b)** Insert the 4 rubber grommets removed in step 3a) into the bottom of the MOPAR Cold Air Box.



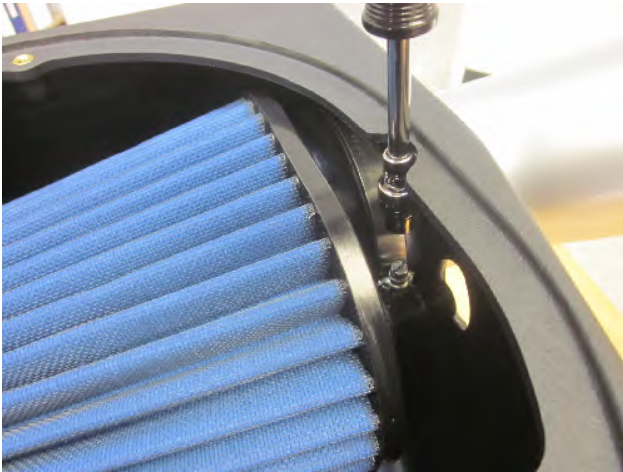
**c)** Attach the flanged air filter adaptor tube to the MOPAR Cold Air Box with four (4) M6 bolts provided. Pay attention to the adaptor tube's orientation with reference to the cold air duct.



**d)** Install the supplied adaptor fitting into the hole on the Air Filter – the barbed end goes into the air filter.



**INSTALLATION INSTRUCTIONS**  
**COLD AIR INTAKE KIT**  
**2009-2014 RAM 5.7L V8**  
PART NUMBER 77070023AC



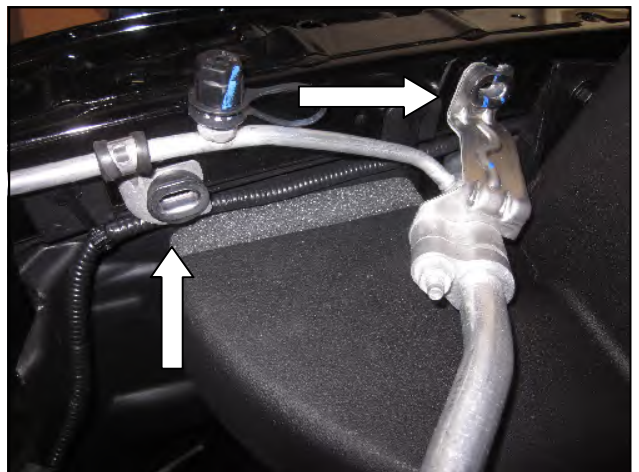
**e)** Install the Air Filter on to the air filter adaptor tube inside the Cold Air Box. Make sure the bead on the adaptor tube engages the groove inside the filter. Do not fully tighten the hose clamp at this point.



**f)** With care, remove the IAT (intake air temperature) sensor from the factory air intake hose.



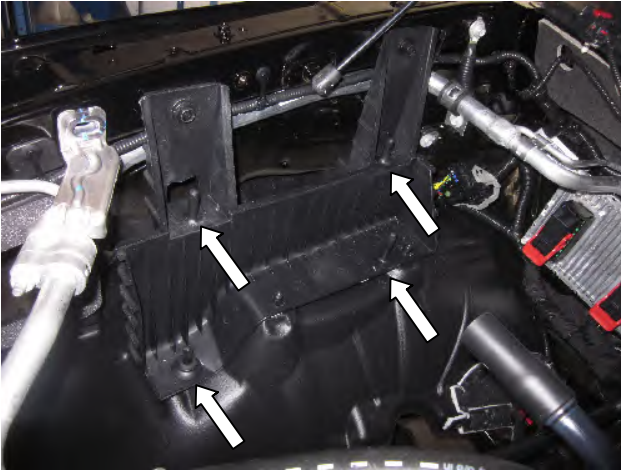
**g)** Insert the IAT sensor into the opening on the MOPAR air intake hose.



**h)** On 2013+ models, remove the two (2) M6 bolts that secure the A/C lines to the core support to provide more room during the Cold Air Box installation in the next step.



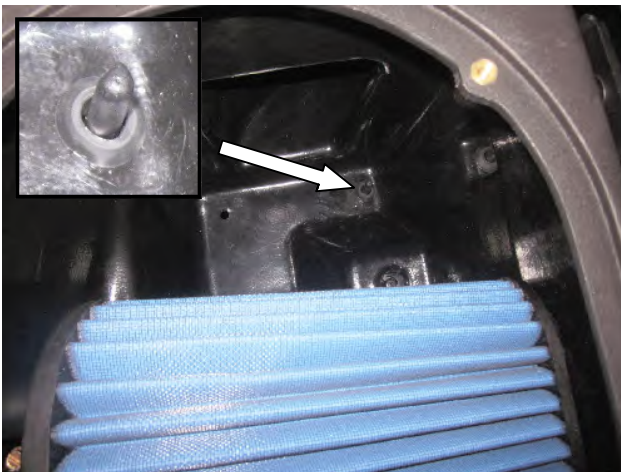
**INSTALLATION INSTRUCTIONS  
COLD AIR INTAKE KIT  
2009-2014 RAM 5.7L V8  
PART NUMBER 77070023AC**



**i)** Install the MOPAR Cold Air Box on the upper and lower locator posts of the Air Box mounting bracket.



**j)** Install the complete Air Box assembly into the engine compartment. Make sure the rubber grommets on the bottom are fully engaged on the locator posts.



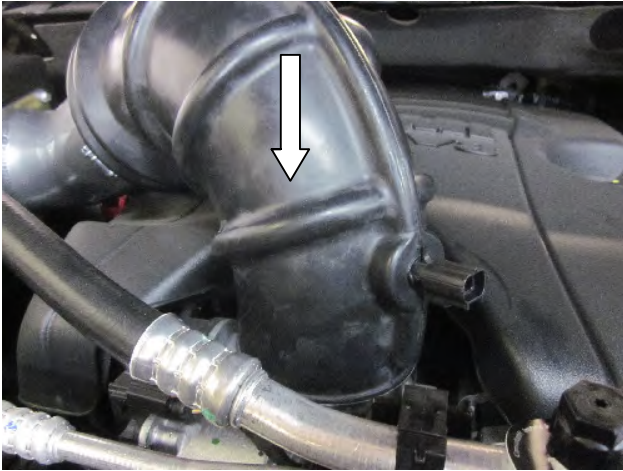
**k)** Press down firmly on the Cold Air Box to seat the grommets on the locator posts and fully engage the air box.



**l)** Attach the larger opening of the MOPAR air intake hose to the air filter adaptor tube with #62 hose clamp. Do not fully tighten the clamp at this point.



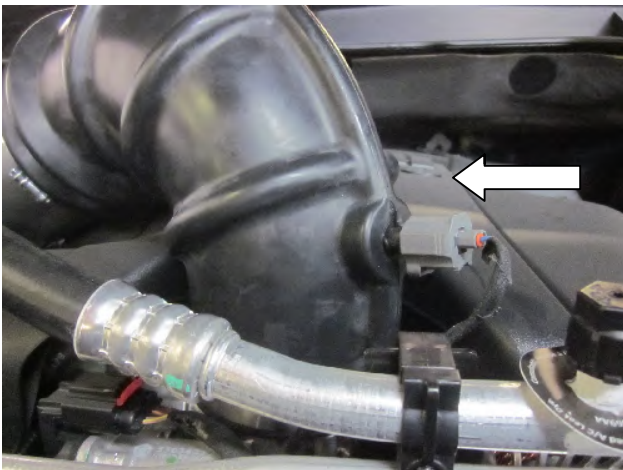
INSTALLATION INSTRUCTIONS  
**COLD AIR INTAKE KIT**  
**2009-2014 RAM 5.7L V8**  
PART NUMBER 77070023AC



m) Attach the other end of the MOPAR Air Intake Hose to the throttle body with the supplied #56 hose clamp. Do not fully tighten the clamp at this point.



n) Attach the engine crank case vent hose to the fitting on the MOPAR air filter through the hole in the air box. **Make sure the air filter is fully seated on the adaptor tube and tighten the air filter hose clamp.**



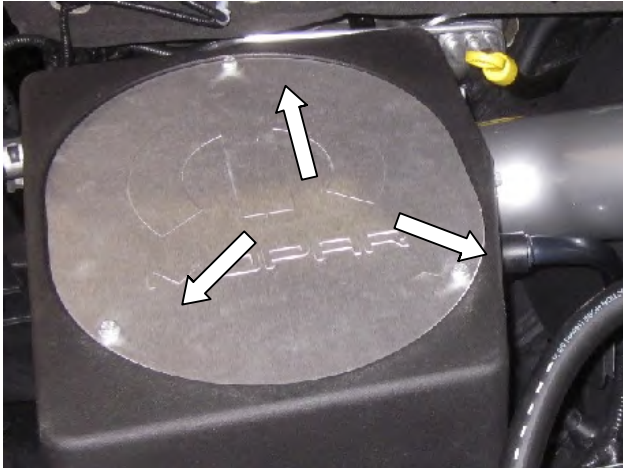
o) Connect the IAT sensor electrical connector to the IAT sensor. Make sure the connector is fully engaged and locked.



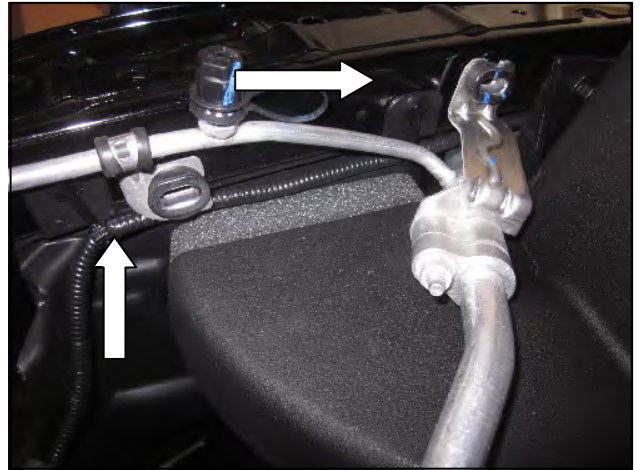
p) Install the seal on the **back side** of the Closing Panel making sure to align the 3 holes properly. Note: Avoid stretching the seal material while applying it to the panel.



**INSTALLATION INSTRUCTIONS**  
**COLD AIR INTAKE KIT**  
**2009-2014 RAM 5.7L V8**  
PART NUMBER 77070023AC



q) Install the MOPAR Cold Air Box Closure Panel with the 3 M6 bolts provided.



r) On 2013+ models, reinstall the 2 M6 bolts securing the A/C lines to the core support removed in 3h)



Your MOPAR Cold Air Intake system should look this when properly installed.





INSTALLATION INSTRUCTIONS  
**COLD AIR INTAKE KIT**  
**2009-2014 RAM 5.7L V8**  
PART NUMBER 77070023AC

### 5) Re-assemble the vehicle

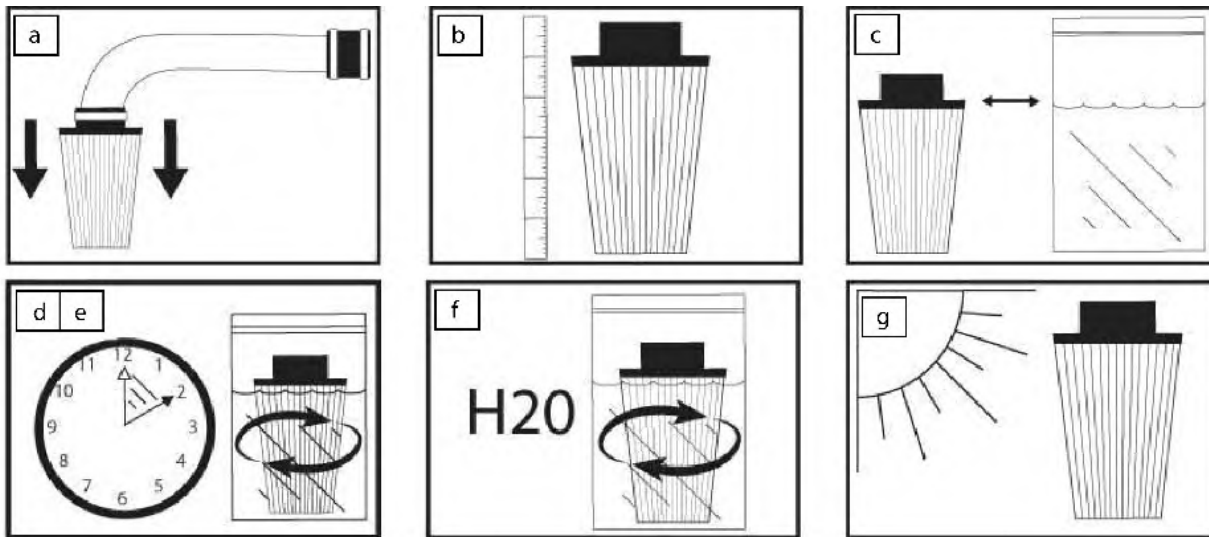
- a) Inspect all MOPAR Cold Air Intake kit components proximity to AC lines, dip sticks, hoses for ample clearance.
- b) **Tighten all fasteners and hose clamps.**
- c) Inspect the engine bay for any loose tools, and then check that all fasteners are tight, and that the IAT sensor cable is properly connected.
- d) Start the engine and allow it to idle, and then perform a final inspection before driving the vehicle.

### 6) Cleaning Instructions: MOPAR DRYFLOW Air Filter

(It is recommended that you service your MOPAR air filter every 20,000 miles for optimum performance.)

- a) Remove the air filter from intake system and set the filter clamp aside.
- b) Measure the length of the filter media.
- c) Fill a pail with warm clean water to the depth determined in Step B. Add a mild household detergent or DRYFLOW air filter cleaning solution to the water.
- d) Without allowing the solution to flow into the filter neck, submerge the filter into the water and let it soak for 10 minutes. After soaking, rotate the filter back and forth to agitate the water and knock off dirt.
- e) Empty the bucket of dirty water. Repeat steps C and D.
- f) Refill the pail with clean warm water and rinse by rotating the filter as in step D. The water should be clear with no signs of dirt in the pail.
- g) Allow the filter to air dry. Re-install the filter on the intake system once it is dry.

**DO NOT APPLY ANY OIL TO THIS FILTER.**



*For technical assistance regarding MOPAR Cold Air Intake Systems, please call toll-free 1-888-528-HEMI (528-4364).*