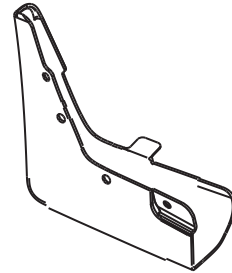
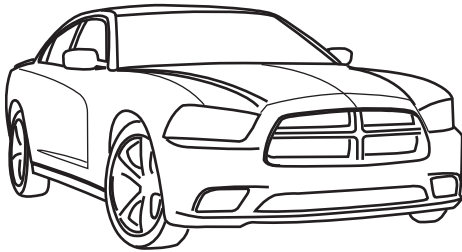


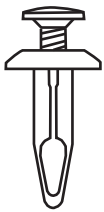


DODGE CHARGER

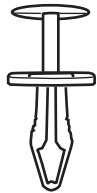
Front Splash Guards



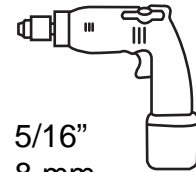
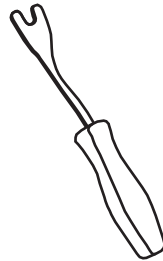
A X2



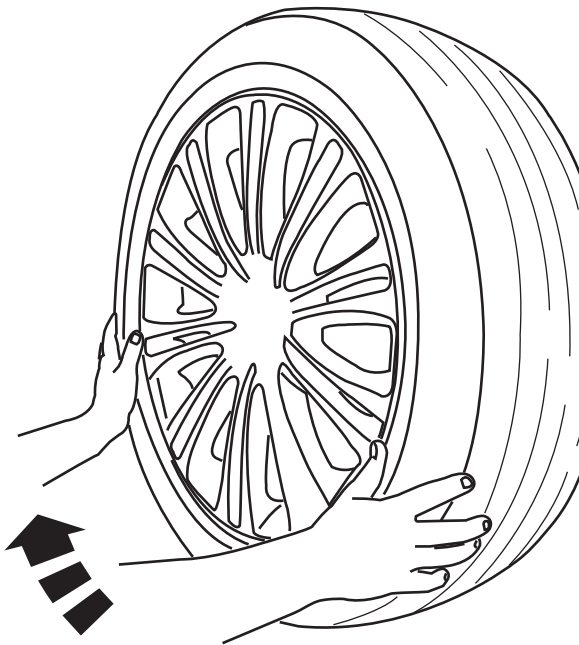
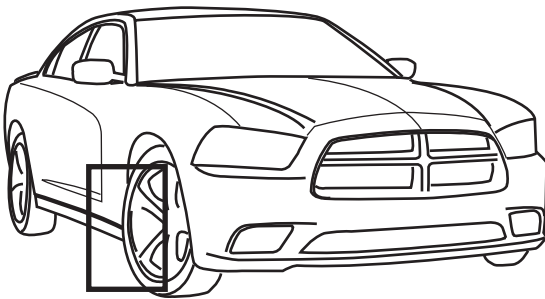
B X2



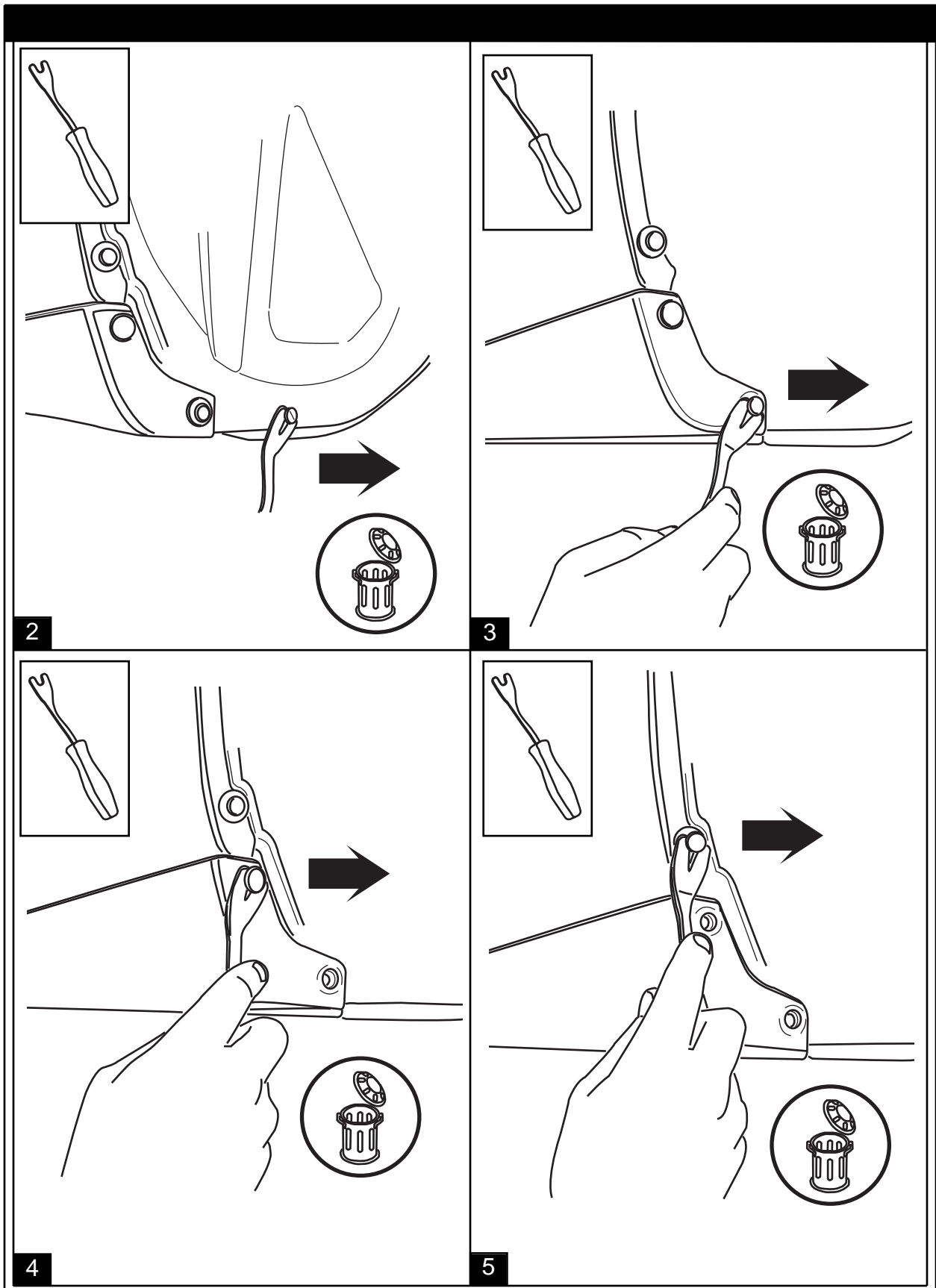
C X8

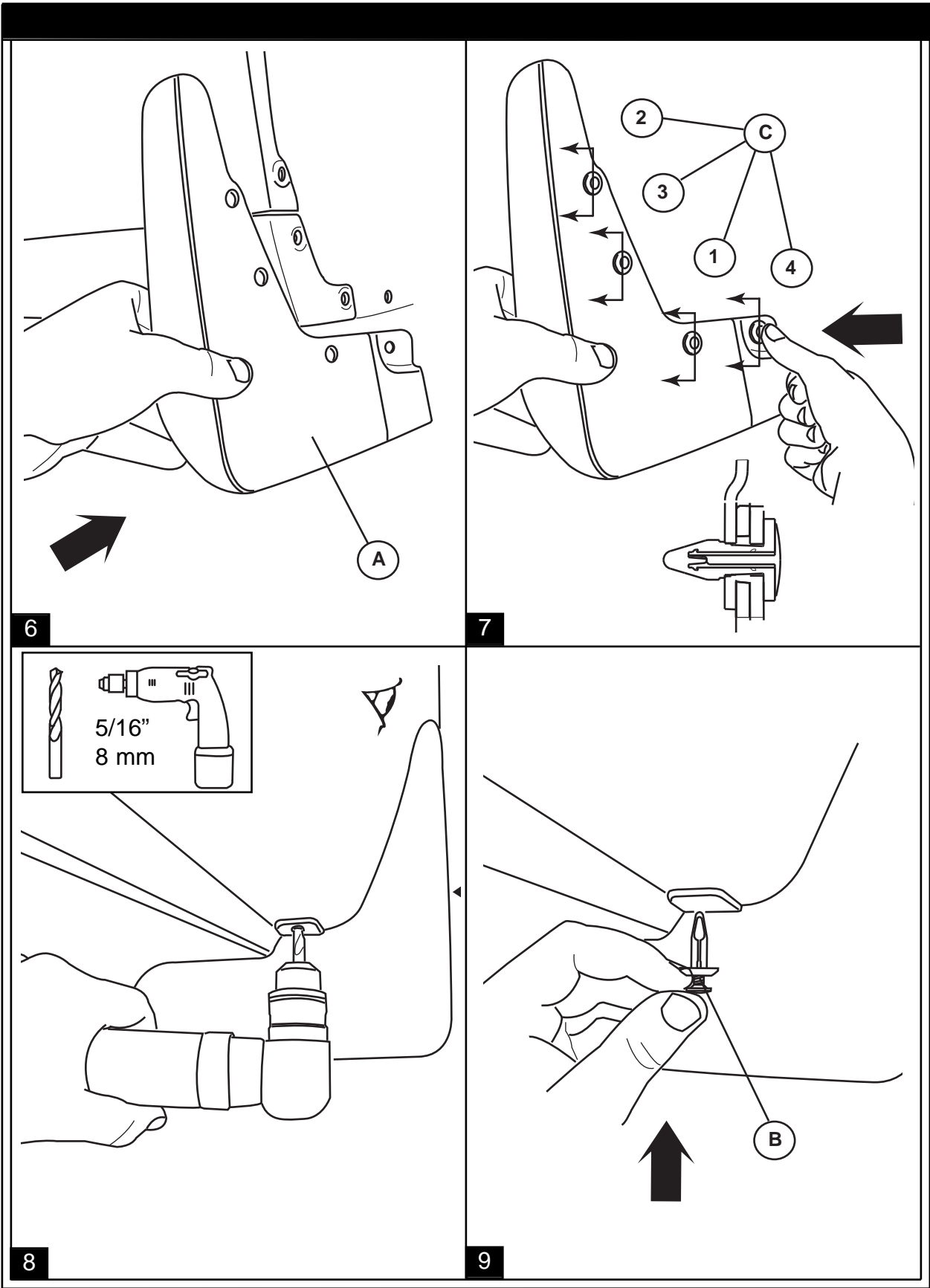


5/16"
8 mm



1





- GB** NOTE: Repeat steps 1-9 on the other side
- E** NOTA: Repita estos pasos 1-9 en otro lado
- F** NOTE: Répétez les étapes 1-9 pour l'autre côté
- G** ANMERKUNG: Wiederhole Schritte 1-9 auf der piher Seite
- I** NOTA: Ripetere i passaggi da 1 a 9 su lato

10