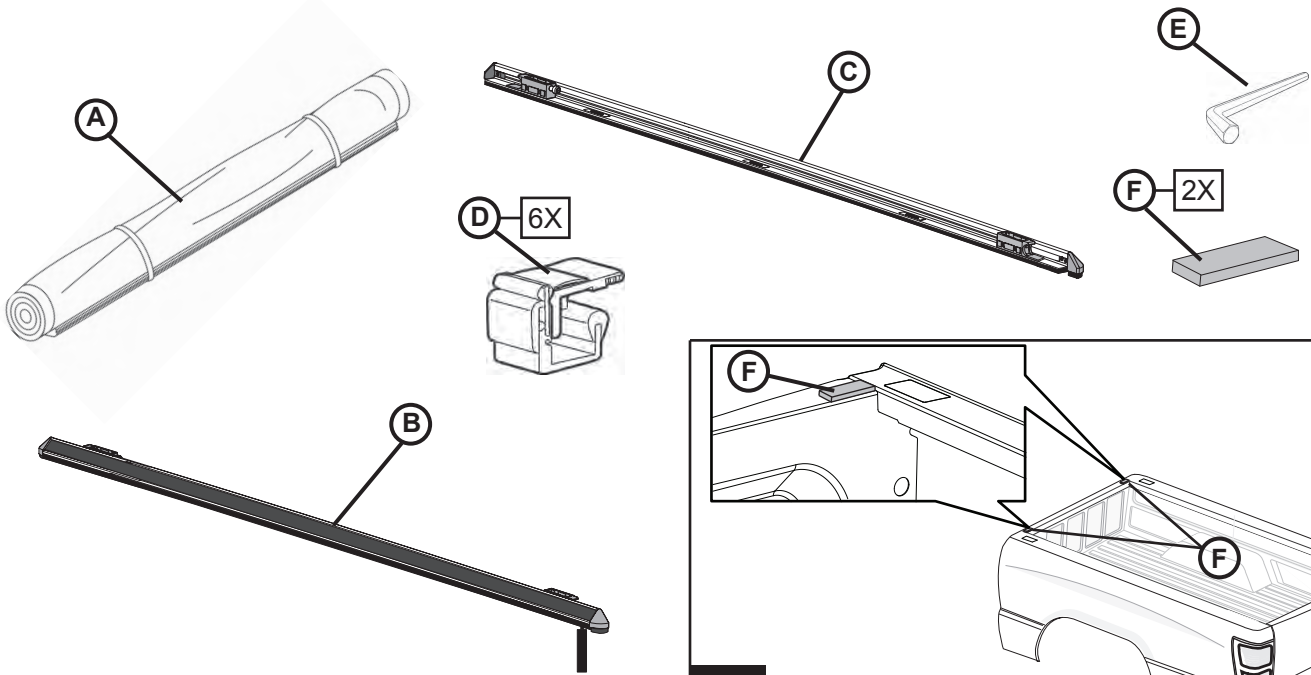
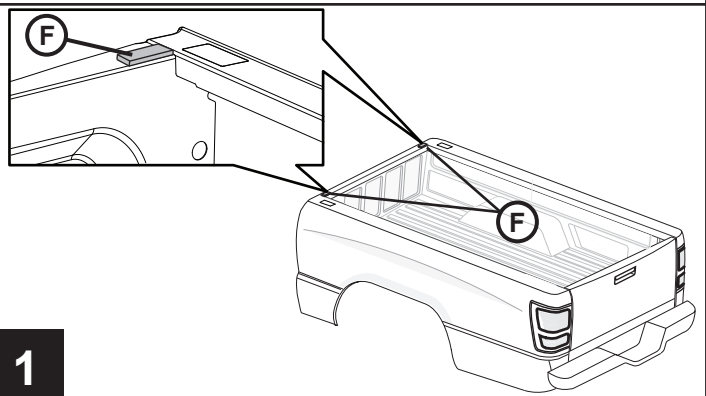




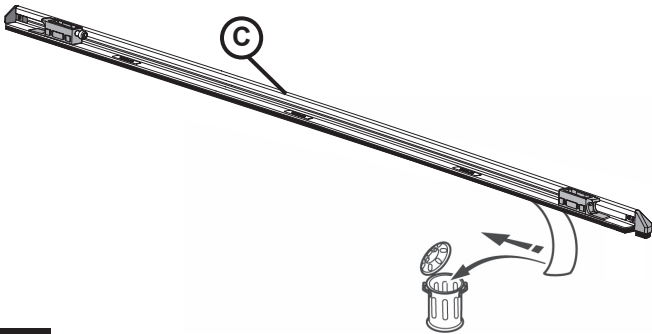
# RAM 1500/2500/3500 SOFT TONNEAU



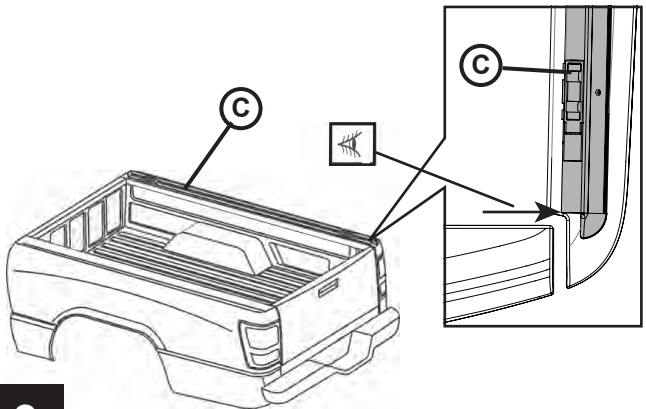
NOT TO SCALE



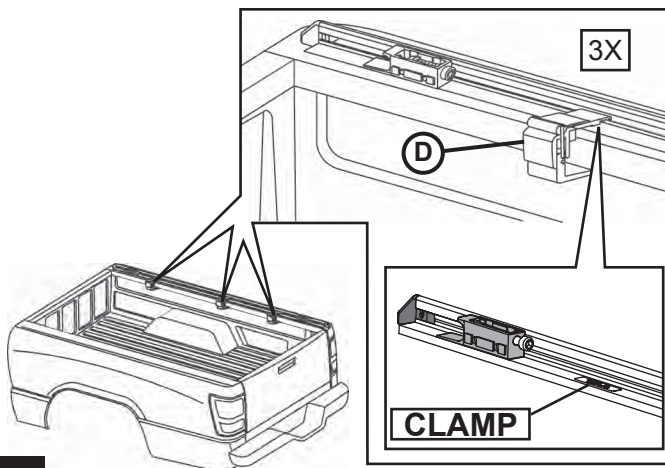
1



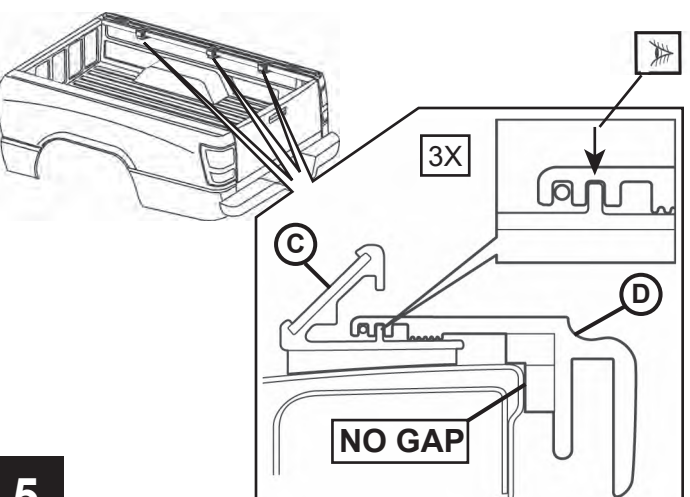
2



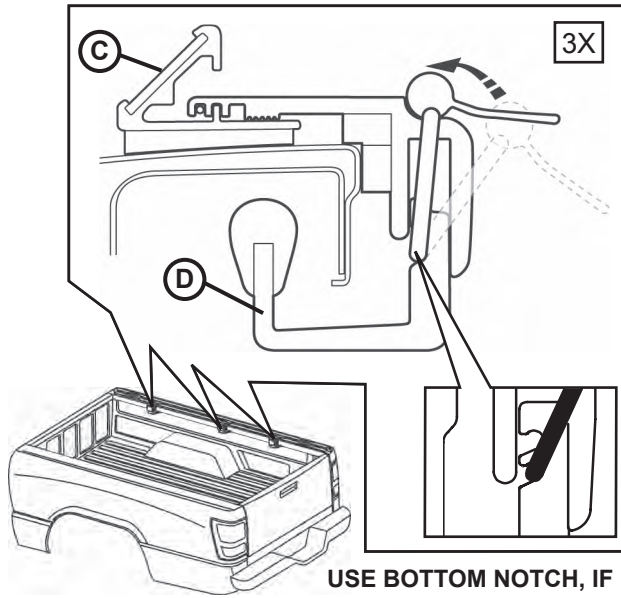
3



4

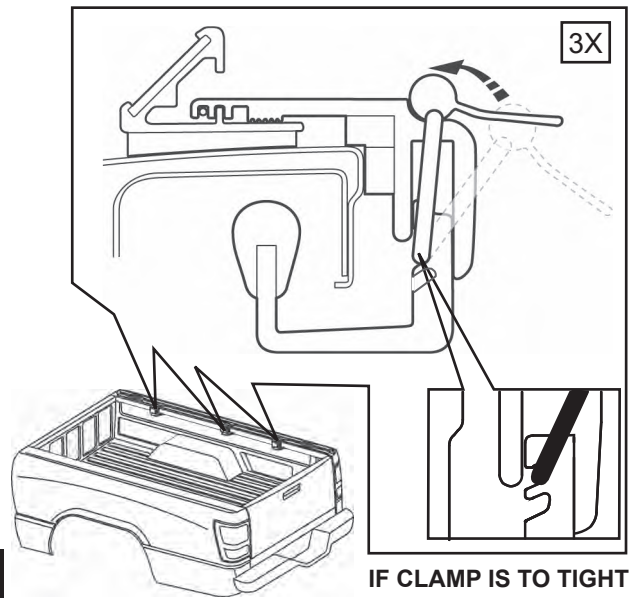


5



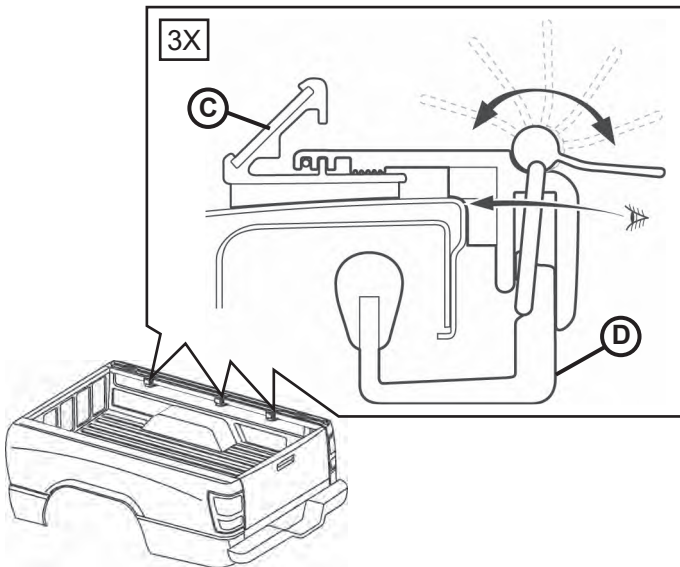
6

USE BOTTOM NOTCH, IF TO TIGHT, SEE STEP 7

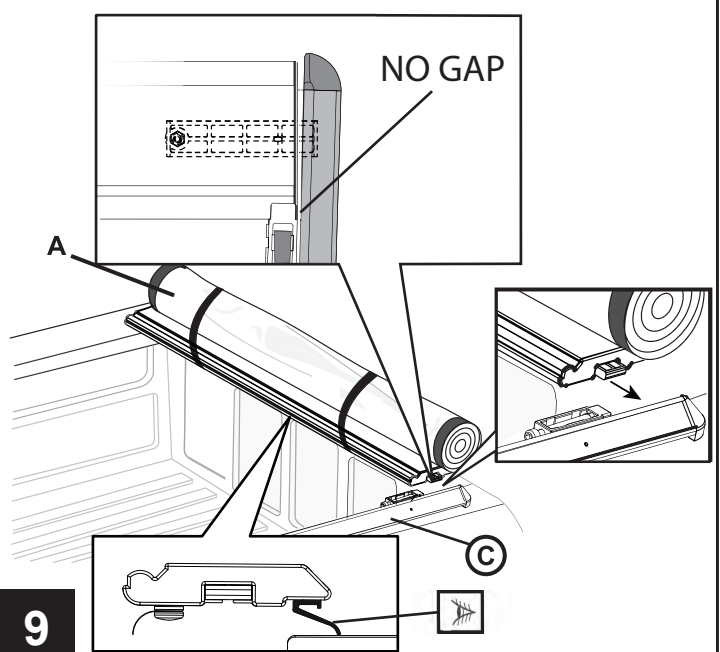


7

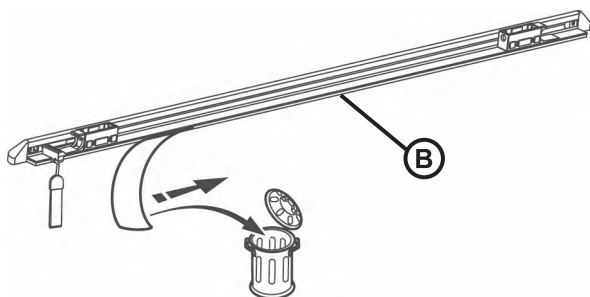
IF CLAMP IS TO TIGHT USE TOP NOTCH.



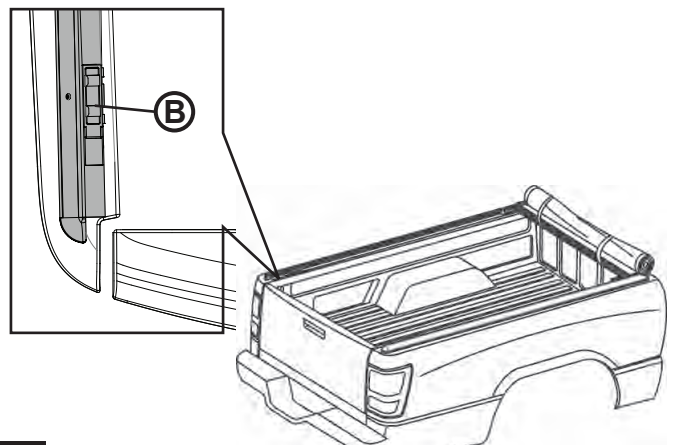
8



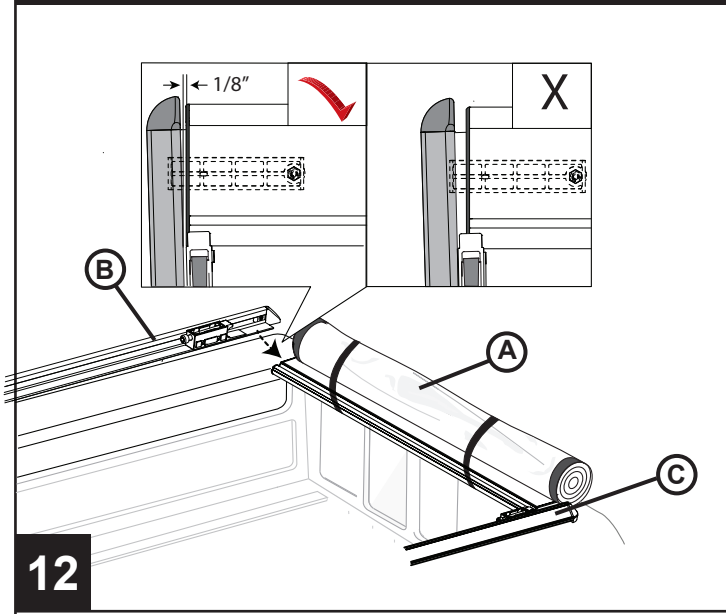
9



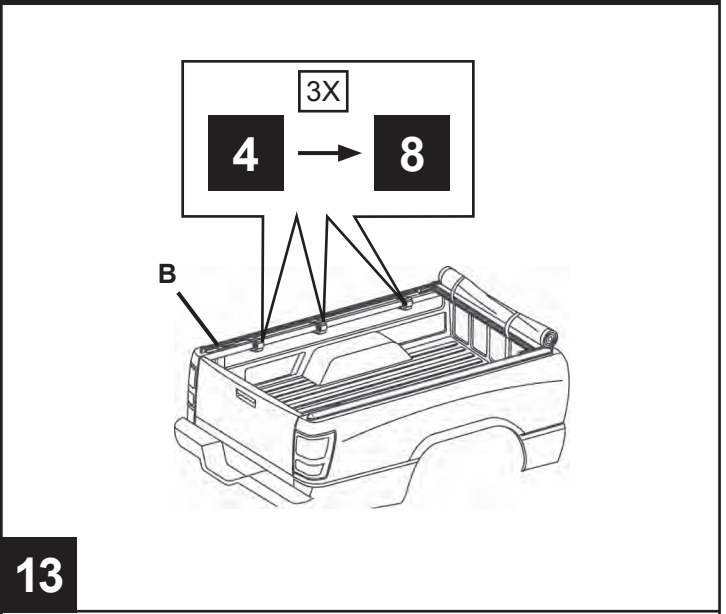
10



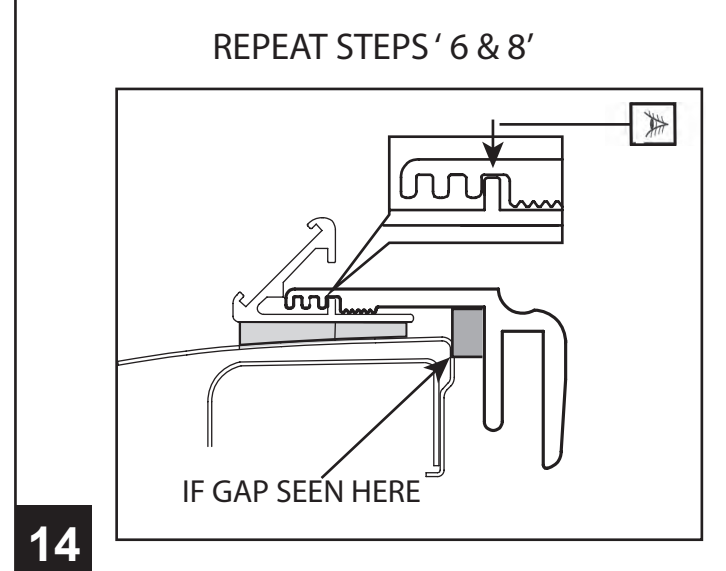
11



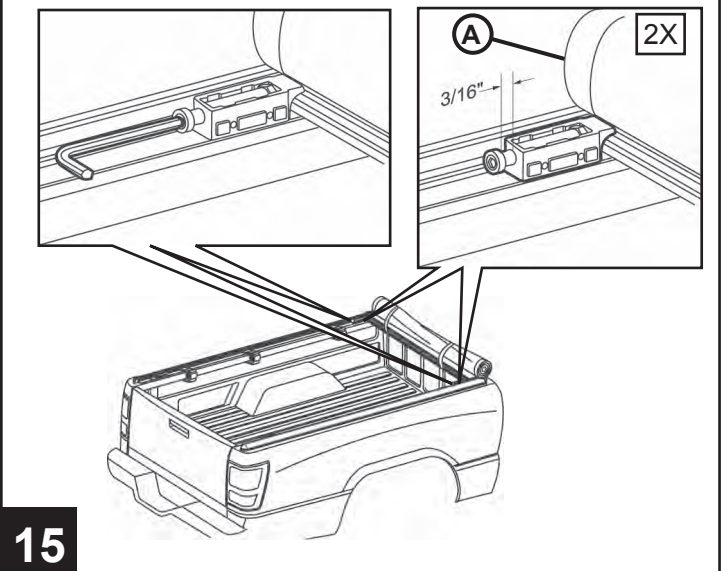
12



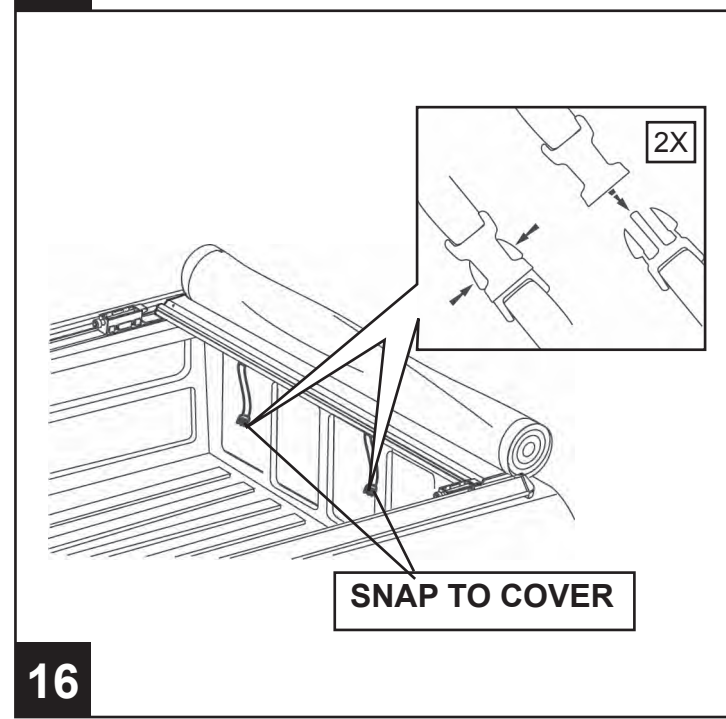
13



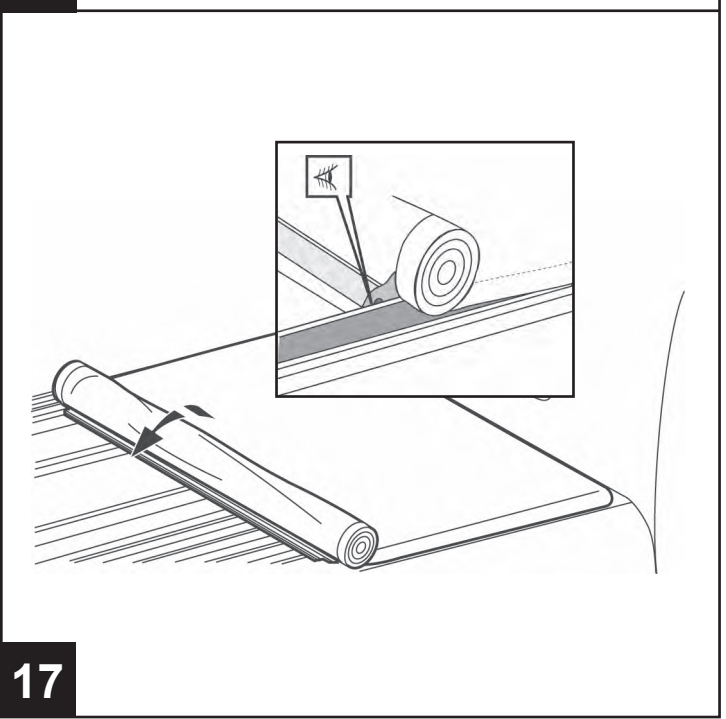
14



15

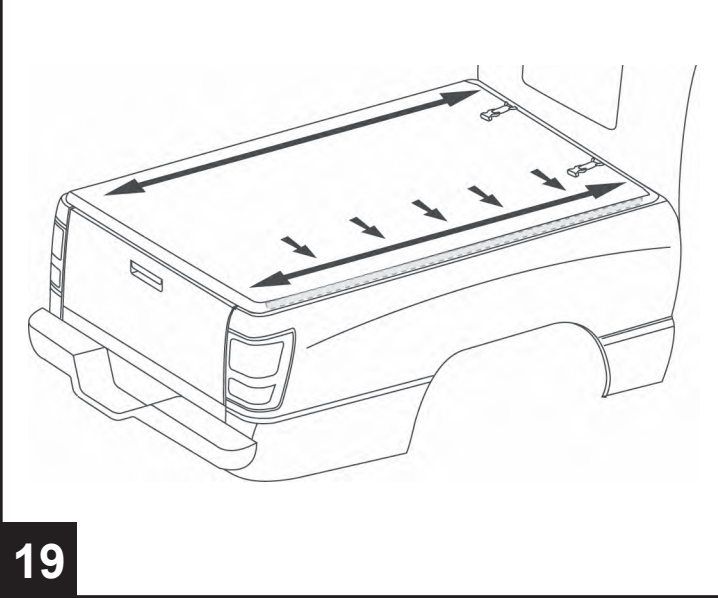
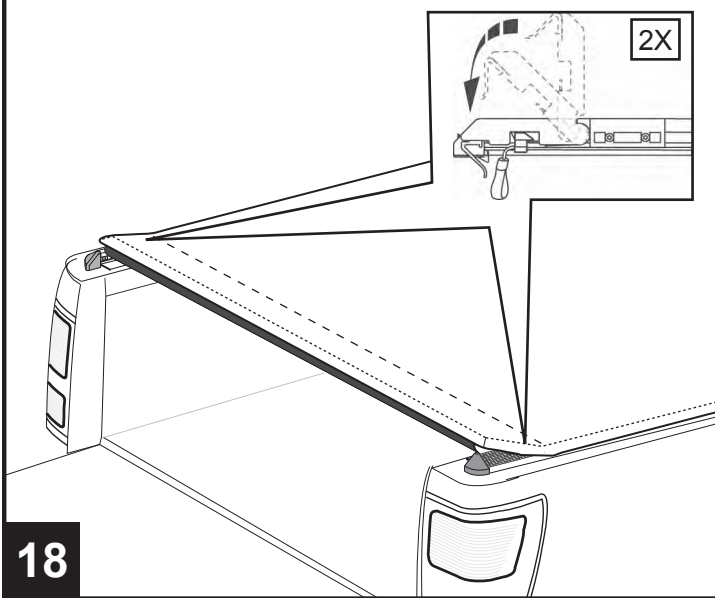


16

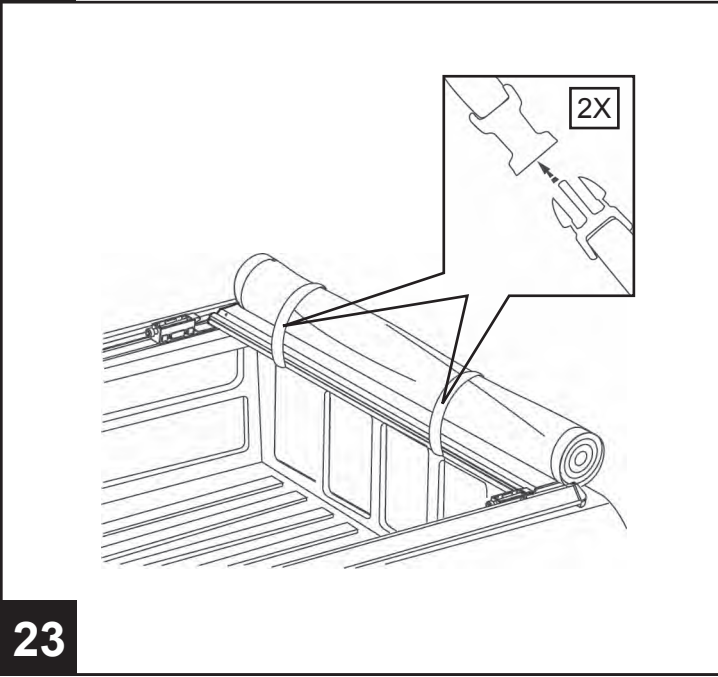
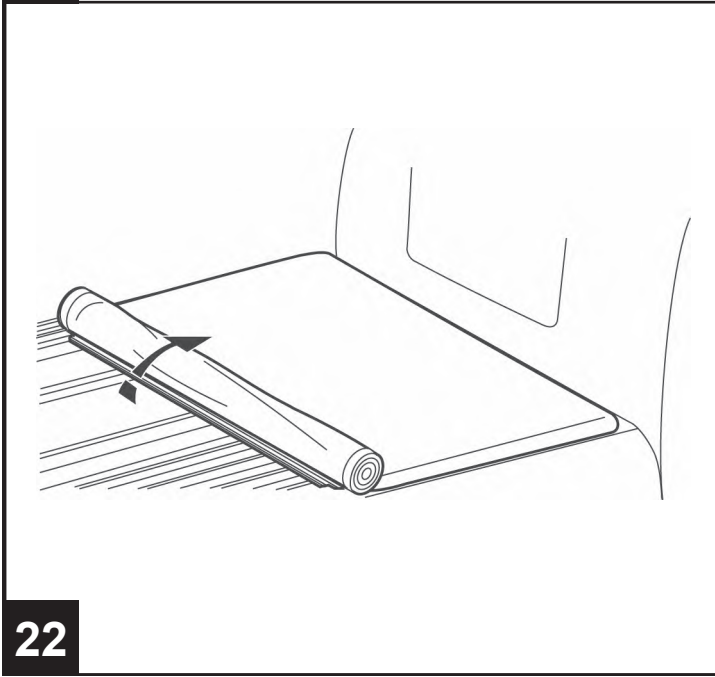
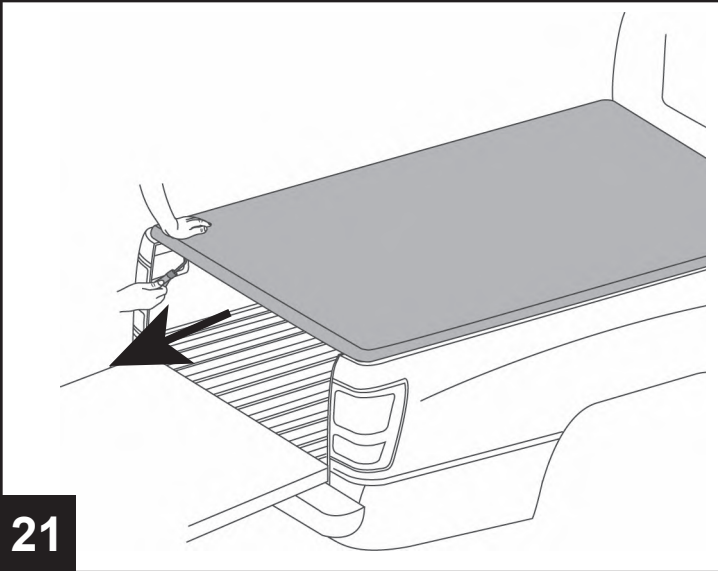
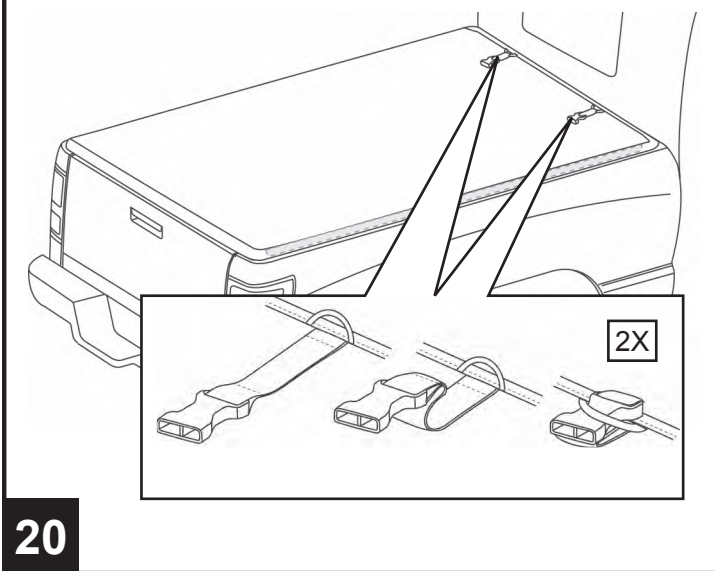


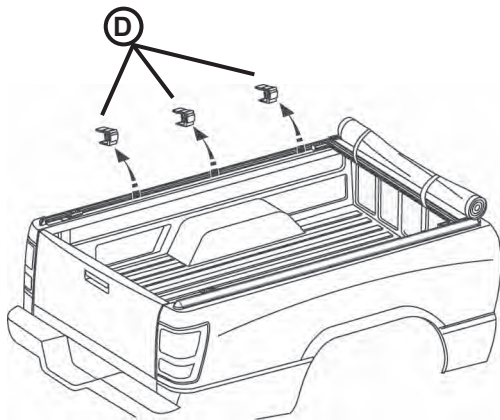
17



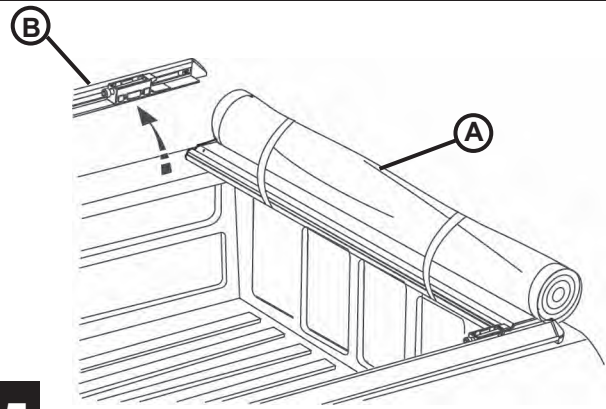


To Remove Cover



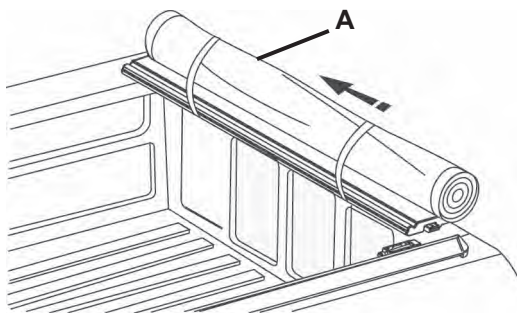


24

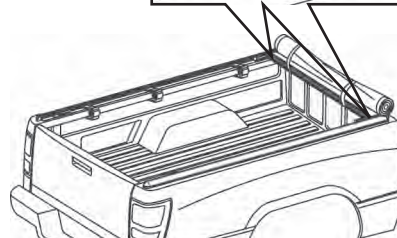
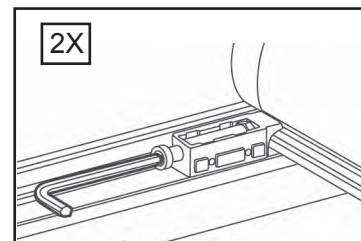


25

**To Adjust Cover**



26



**PREVENTIVE MAINTENANCE AND CUSTOMER CARE**

- Wash only with mild soap and dry with a clean cloth.
- Do not use cleaning solvents of any kind.
- Pressure car washes are okay as long as you hold the wand no closer that two feet from the cover.
- We recommend the same quality products normally used for vinyl tops to keep your cover clean. When using a protectant, be sure that it is water based.



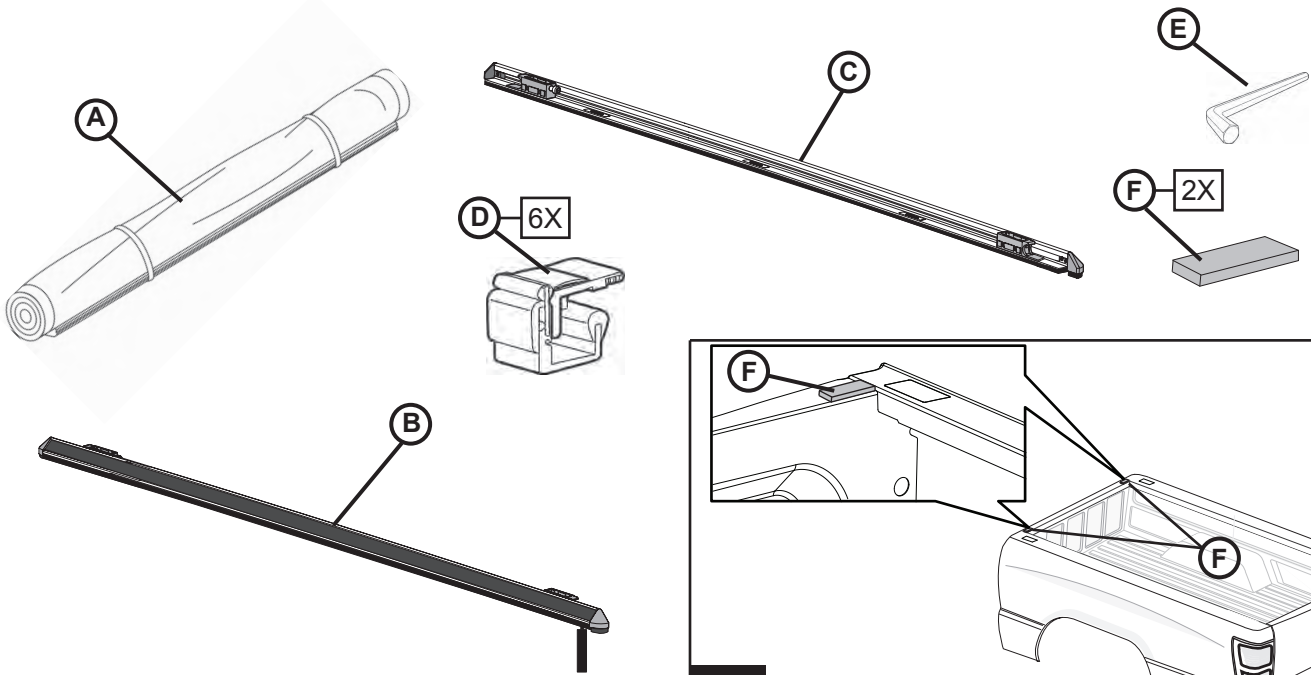
**WARNING AND CAUTION**



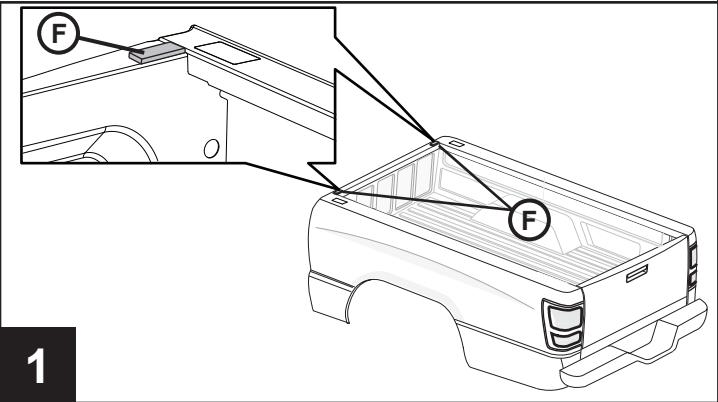
- The Tonneau Cover **MUST BE** closed or secured with straps while the vehicle is in motion.
- **DO NOT** load any measurable weight onto the top of the Tonneau Cover. This will damage the Tonneau Cover frame.
- **DO NOT** use car washes with brush rollers: only use car washes that contain the soft wipe type.
- While cover is in the open position, serious personal injury and property damage can occur if vehicle is driven without both black buckles at the front of the cover fastened.



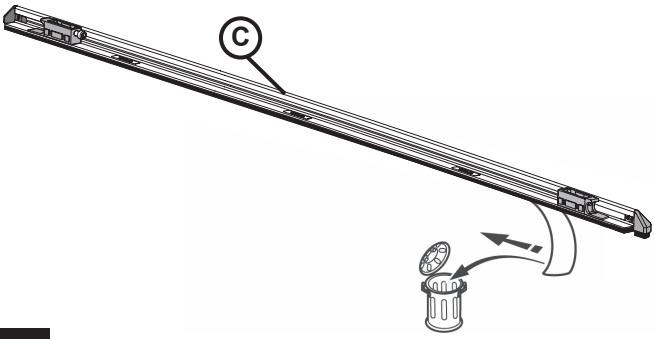
# RAM 1500/2500/3500 SOFT TONNEAU



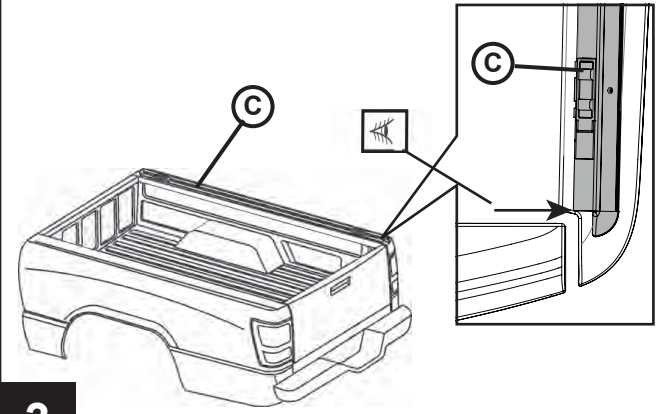
NO ESCALAR



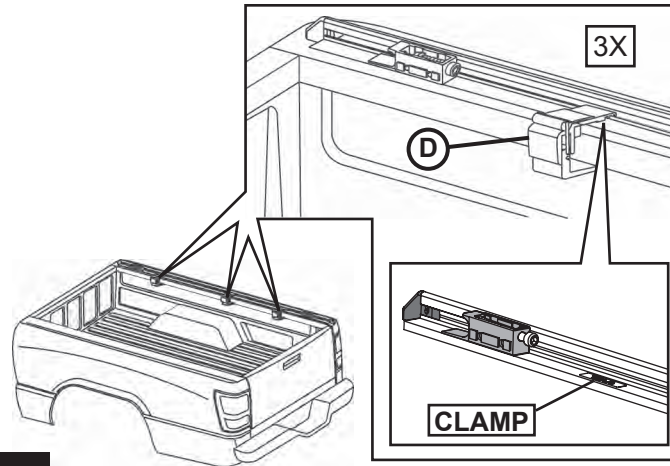
1



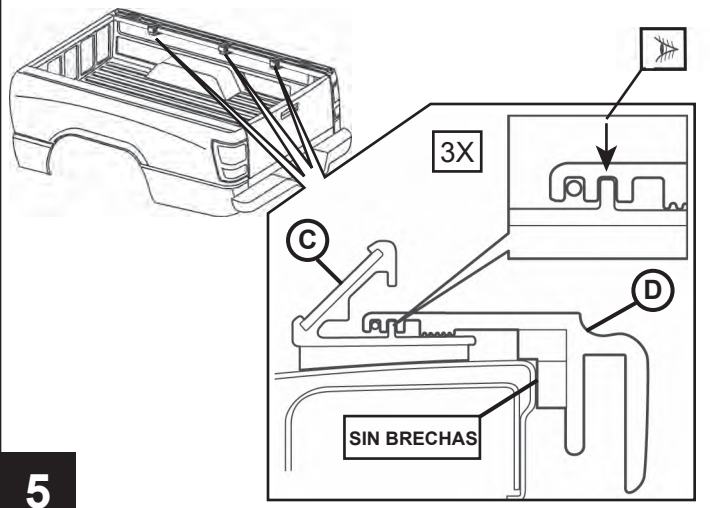
2



3

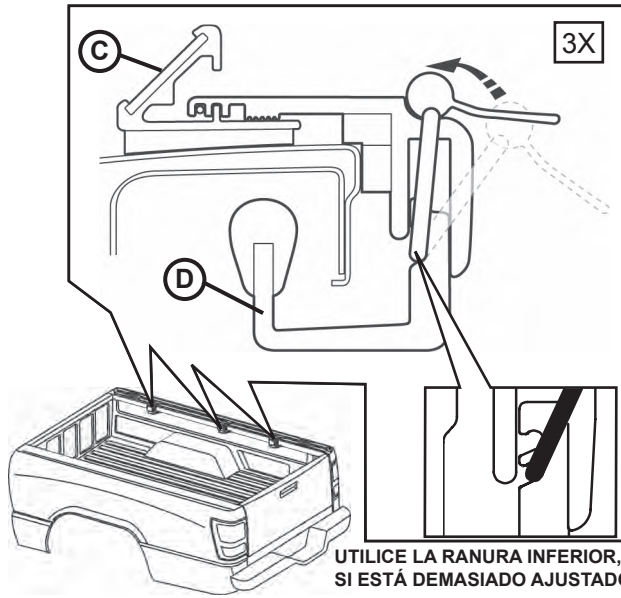


4



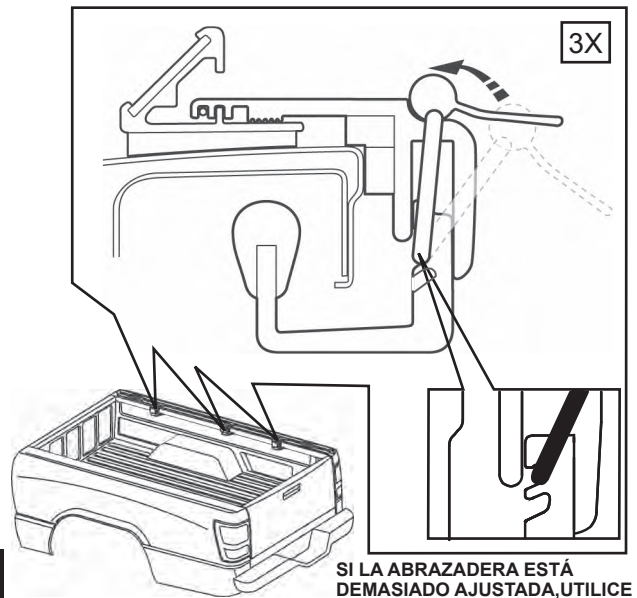
5





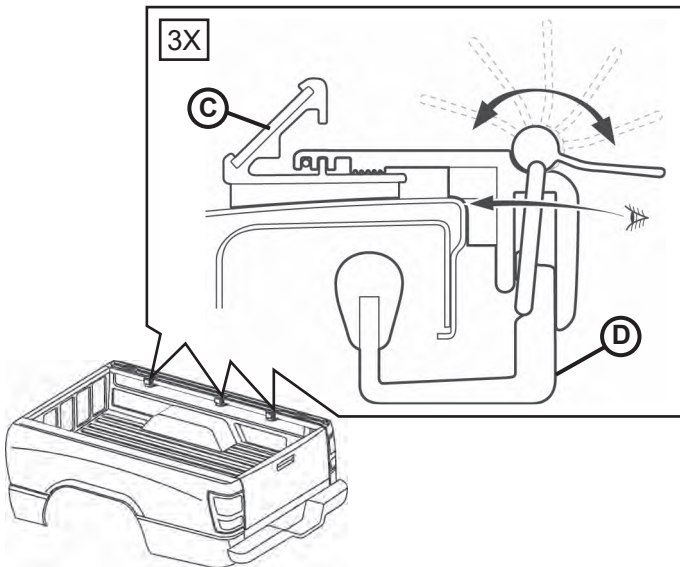
6

UTILICE LA RANURA INFERIOR, SI ESTÁ DEMASIADO AJUSTADO, VAYA AL PASO 7.

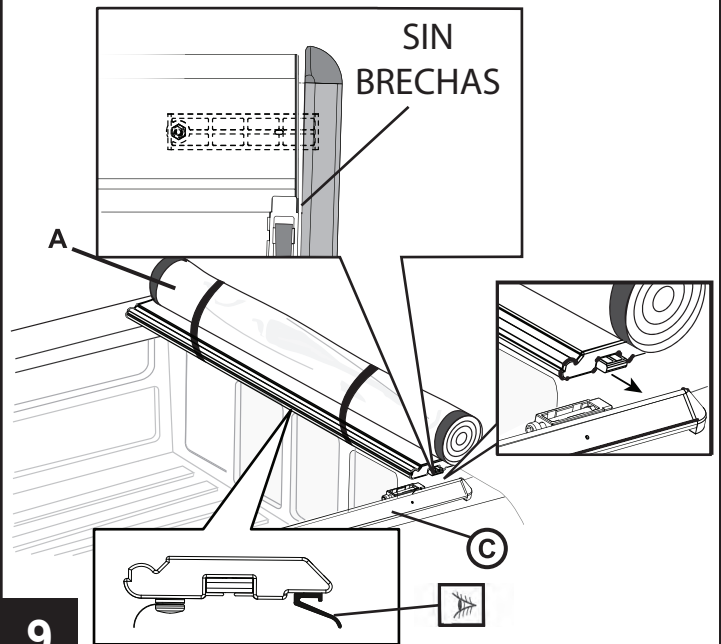


7

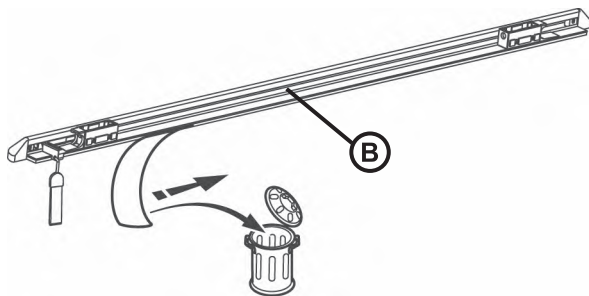
SI LA ABRAZADERA ESTÁ DEMASIADO AJUSTADA, UTILICE LA RANURA SUPERIOR.



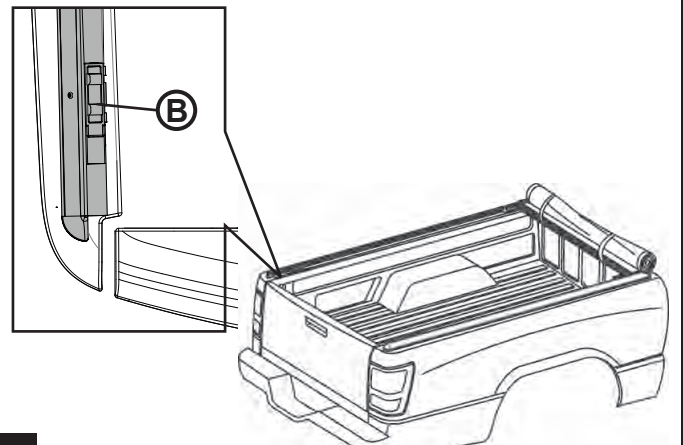
8



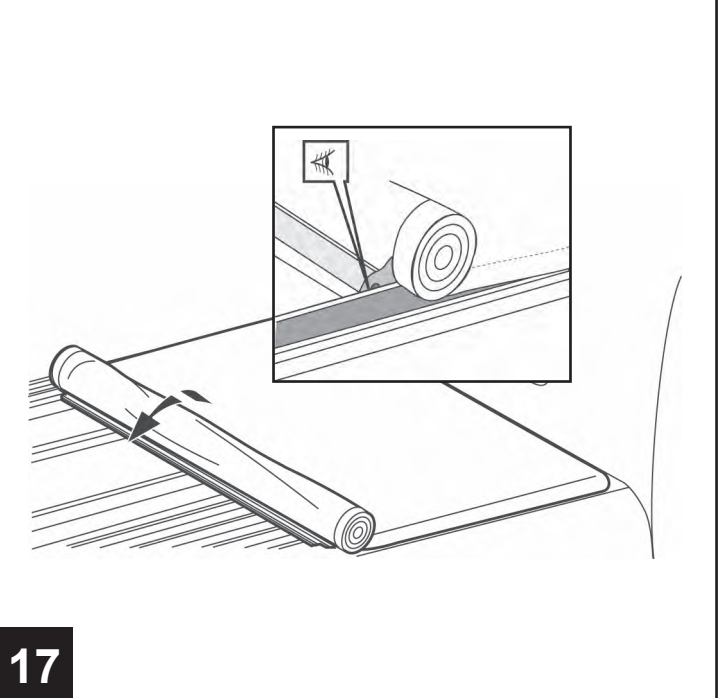
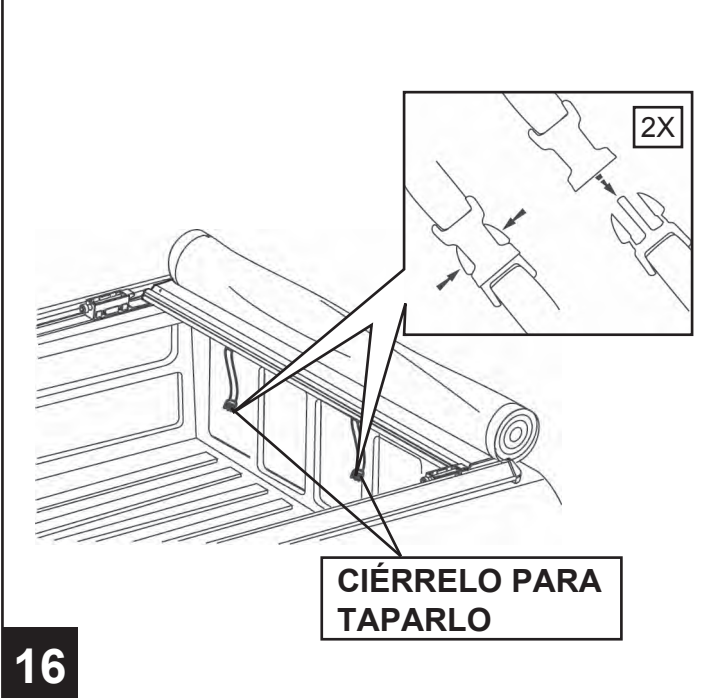
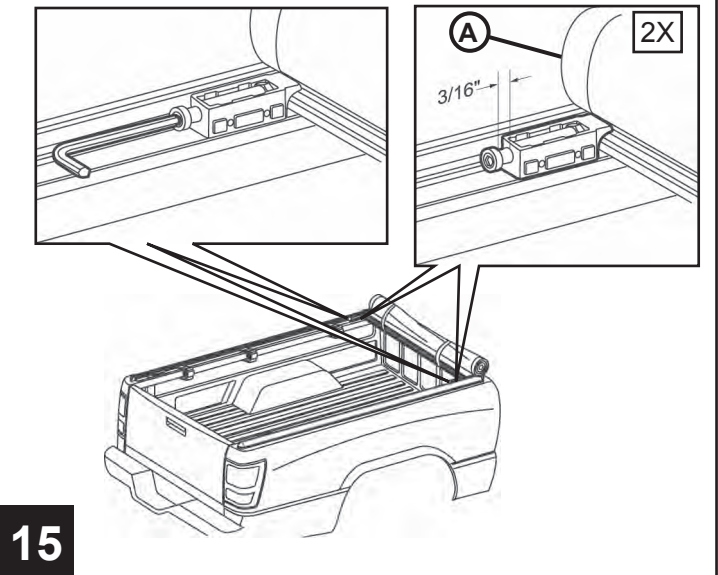
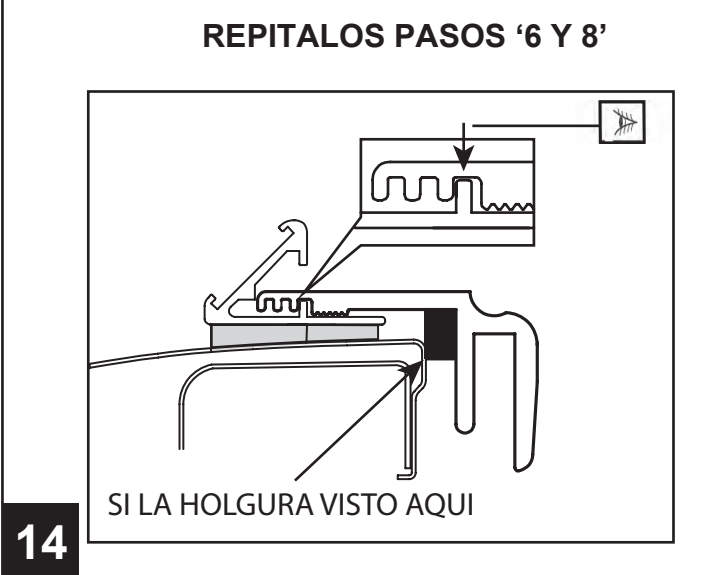
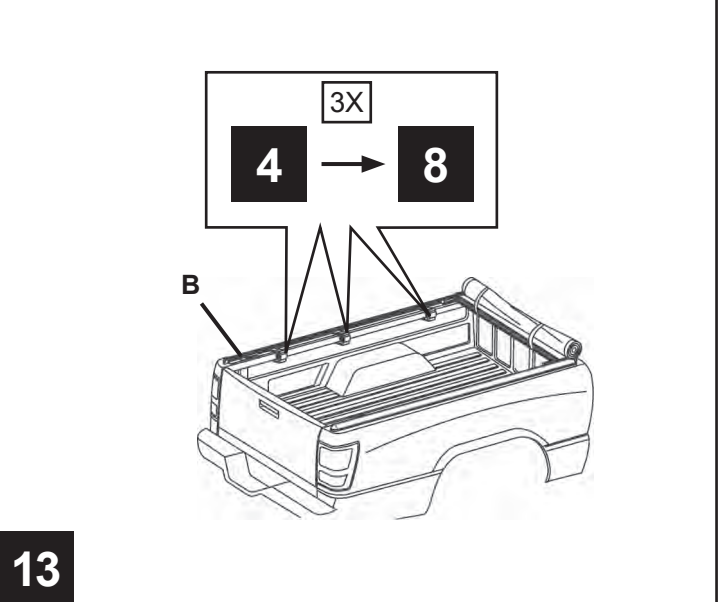
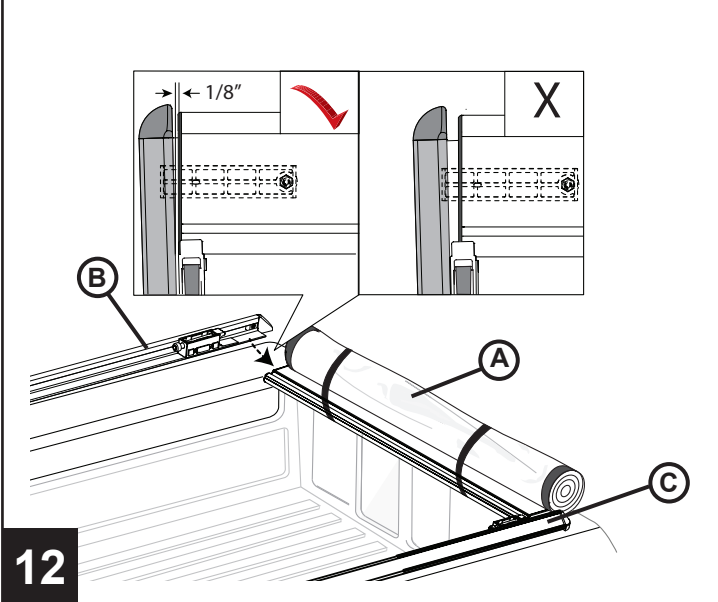
9



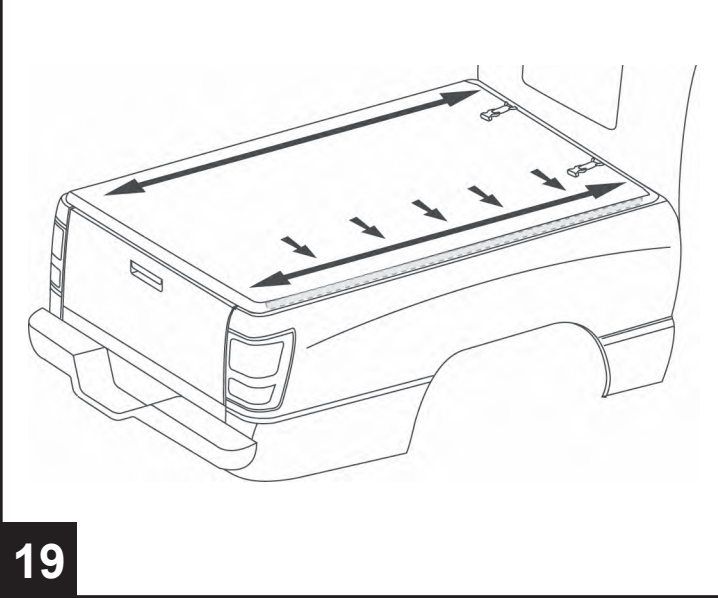
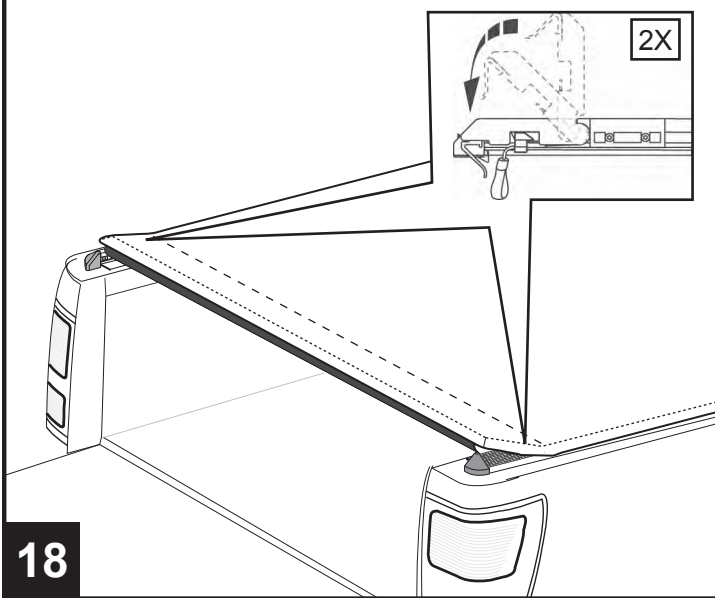
10



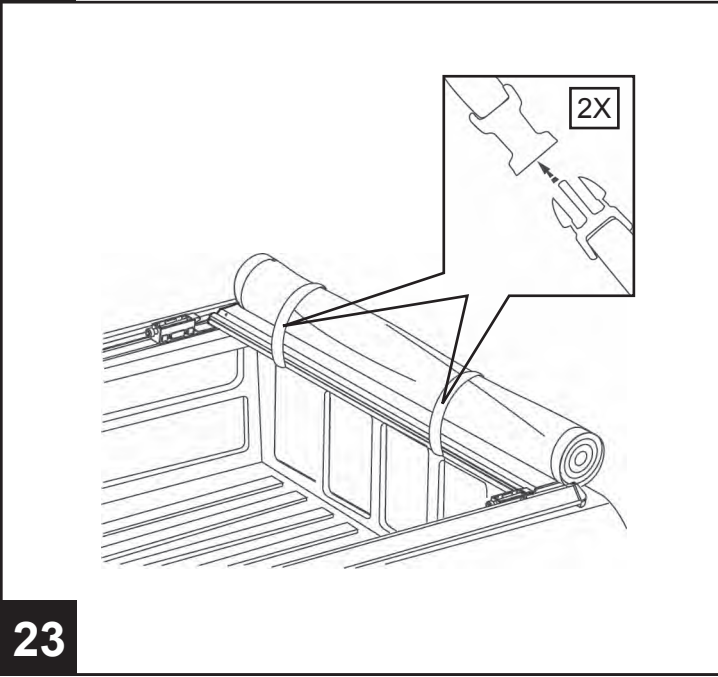
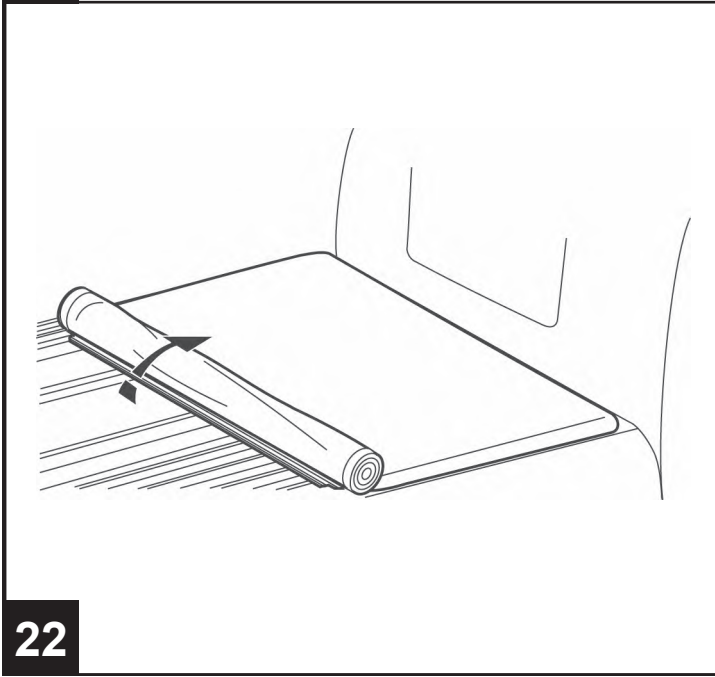
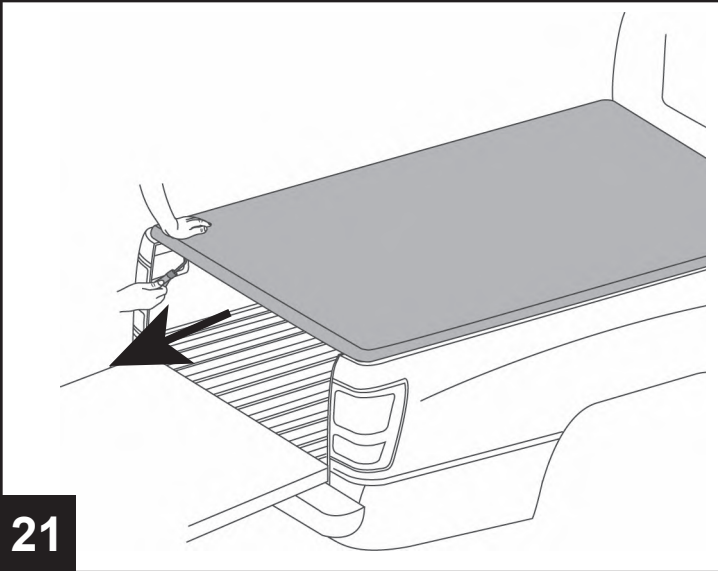
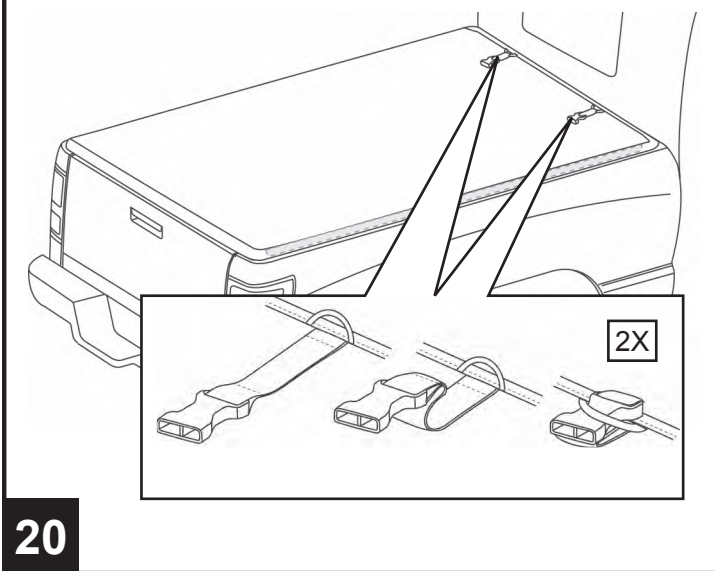
11

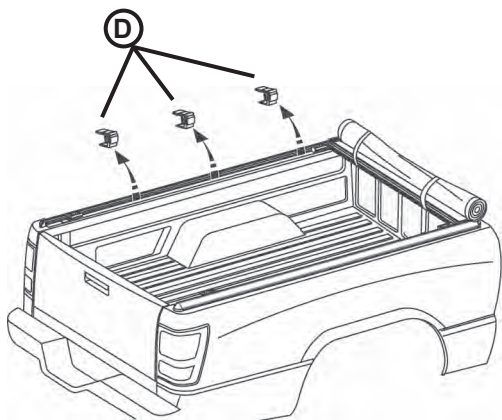




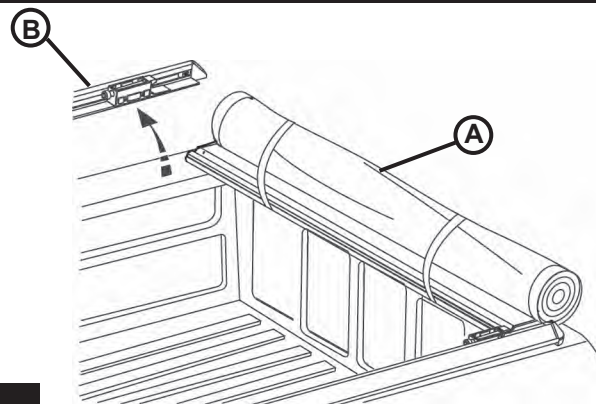


**PARA QUITAR LA TAPA**



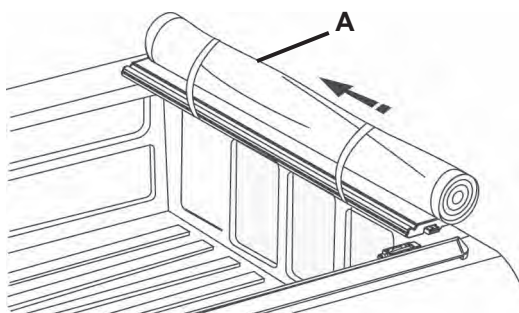


24

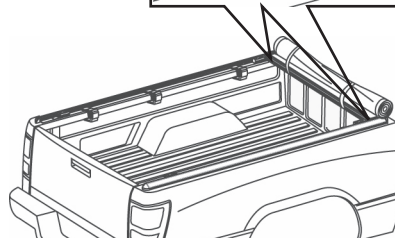
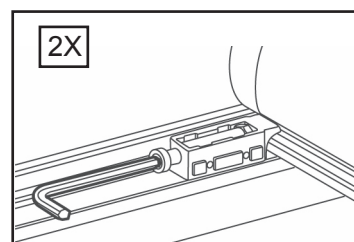


25

**PARA AJUSTAR LA CUBIERTA**



26



**MANTENIMIENTO PREVENTIVO Y CUIDADO POR PARTE DEL CLIENTE**

- Lávelo únicamente con jabón suave y séquelo con un paño limpio.
- No utilice solventes limpiadores de ninguna especie.
- Es posible el lavado a presión siempre y cuando mantenga la varilla como mínimo a dos pies de distancia de la cubierta.
- Para mantener la cubierta limpia, recomendamos utilizar productos de la misma calidad que normalmente se utilizan para la capotas vinílicas. Al usar un protector, asegúrese de que éste sea a base de agua.



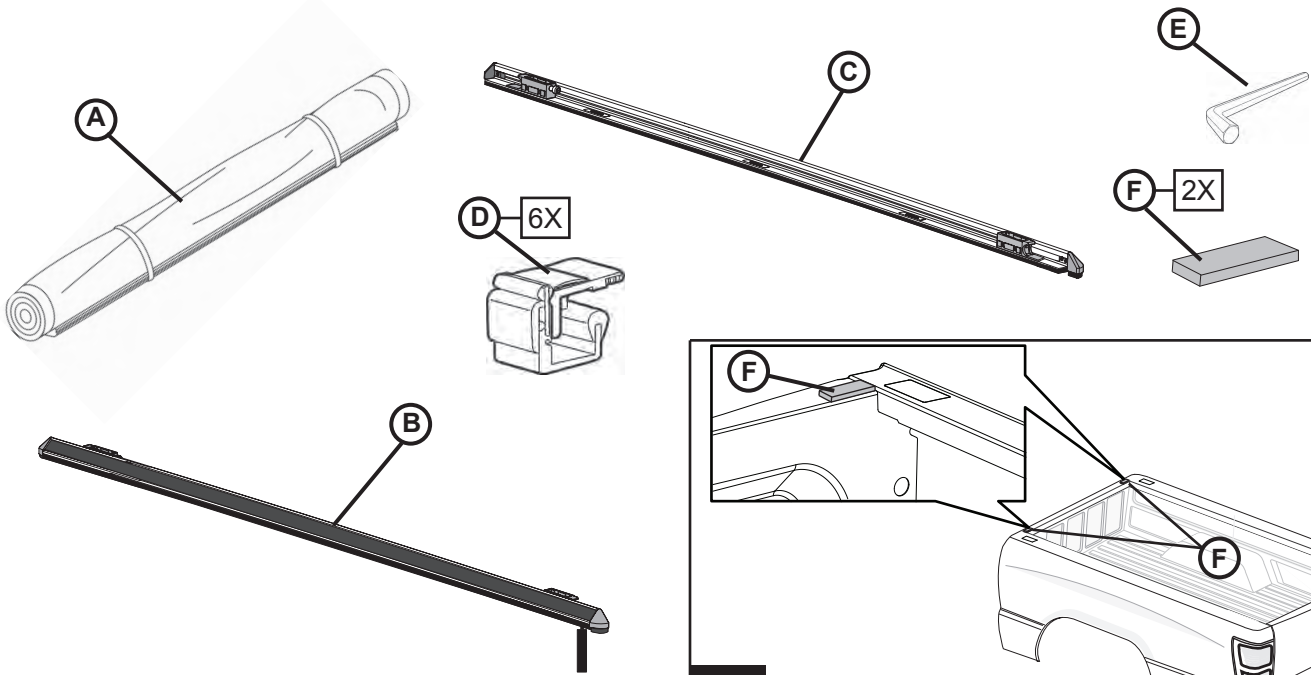
**PRECAUCIONES Y ADVERTENCIAS**



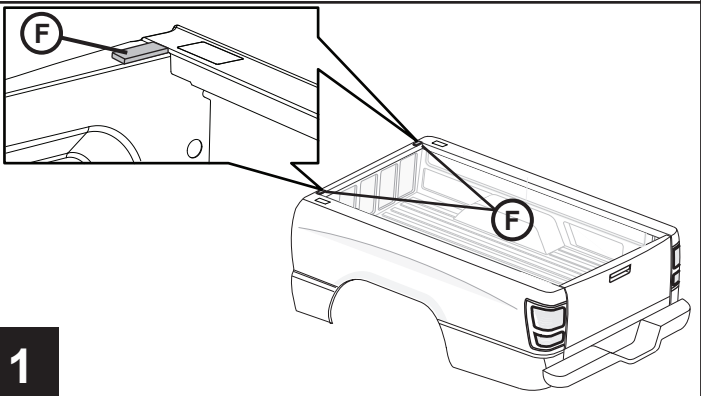
- La capota **DEBE ESTAR** cerrada o asegurada con correas mientras el vehículo se encuentra en movimiento.
- **NO CARGUE** algo demasiado pesado encima de la capota, ya que dañará el bestidor.
- **NO** utilice lavaderos de auto con cepillos rotatorios: sólo utilice lavados suaves.
- Mientras la cubierta esté abierta, se pueden producir lesiones personales y daños a la propiedad serios si las dos presillas negras en la parte frontal de la cubierta no se encuentran abrochadas.



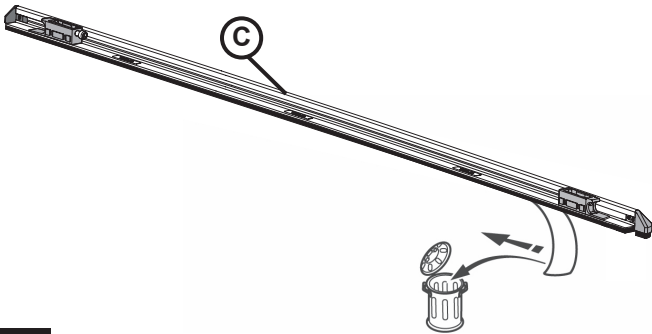
# RAM 1500/2500/3500 SOFT TONNEAU



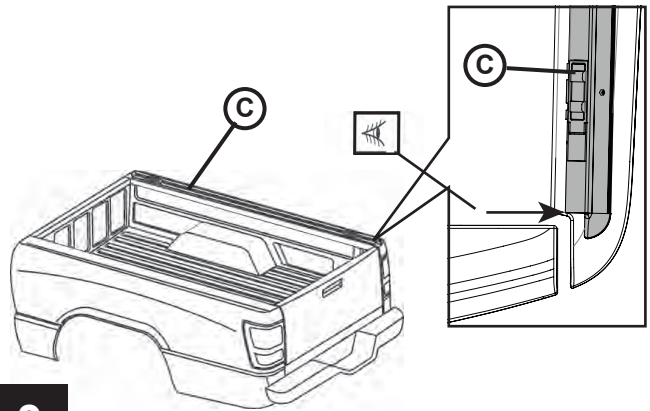
NON À L'ÉCHELLE



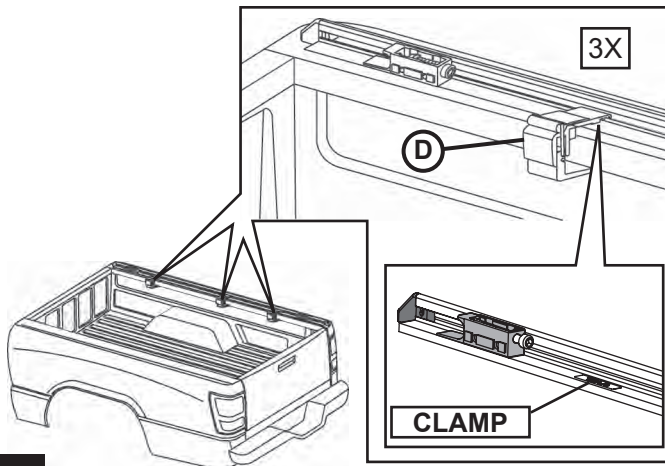
1



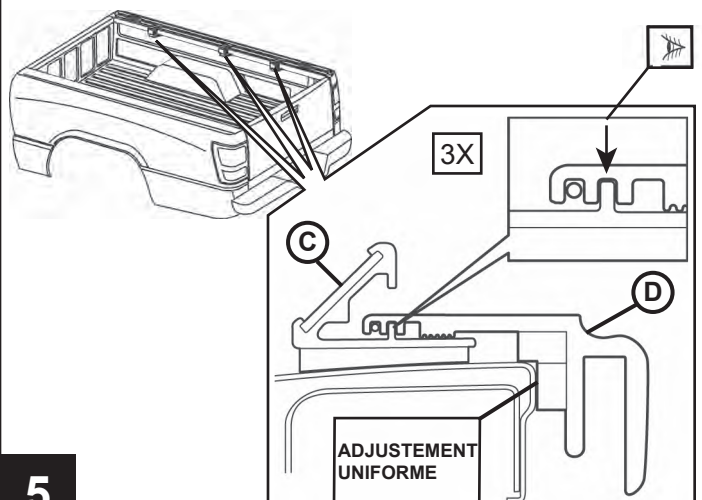
2



3

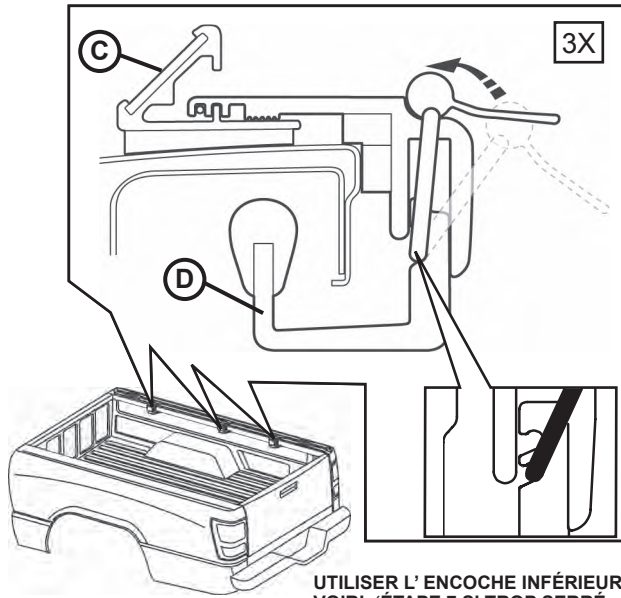


4



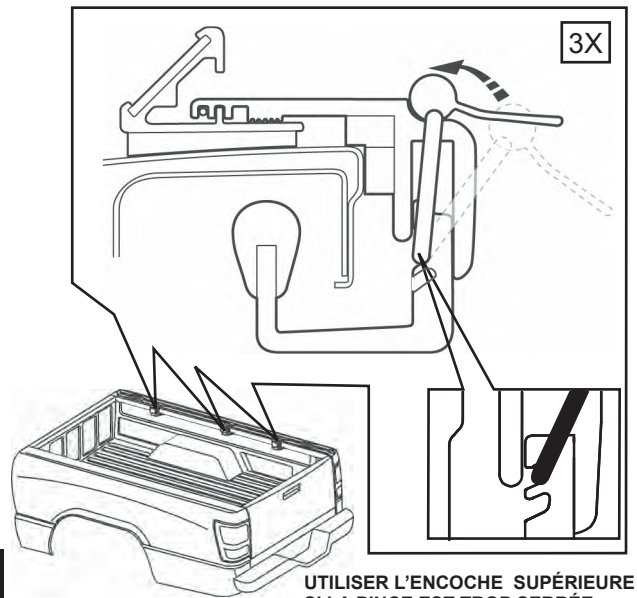
5





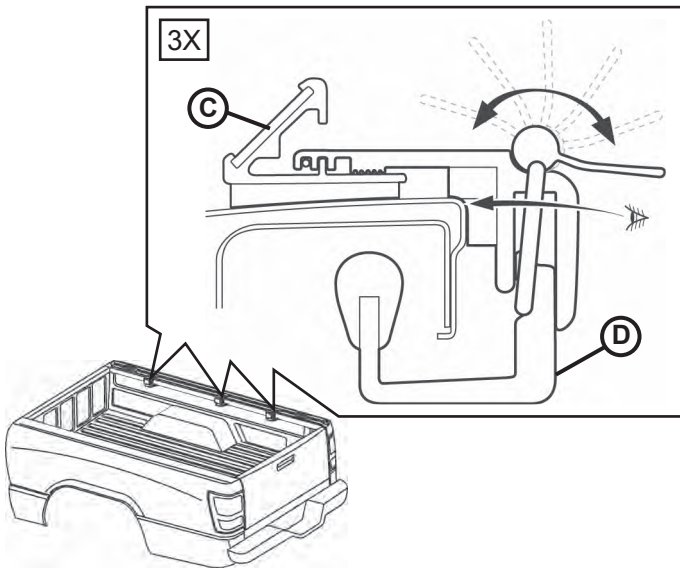
6

UTILISER L' ENCOCHE INFÉRIEURE.  
VOIR L'ÉTAPE 7 SI TROP SERRÉ.

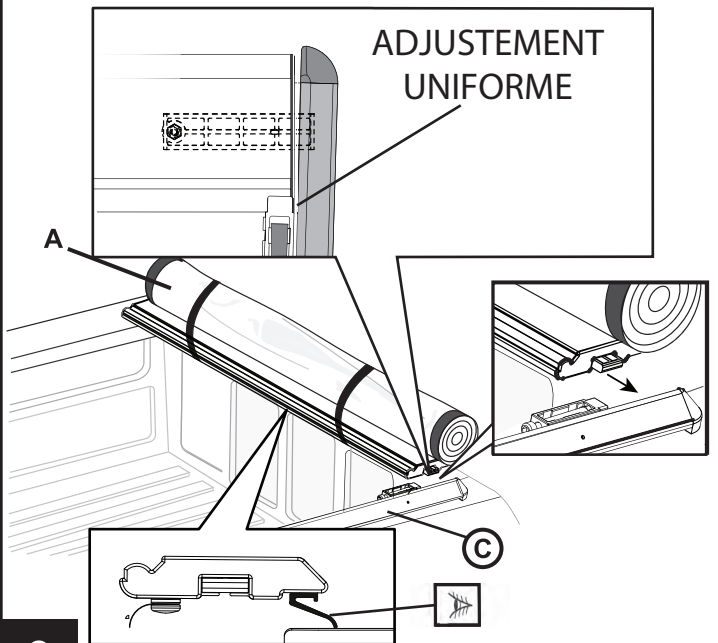


7

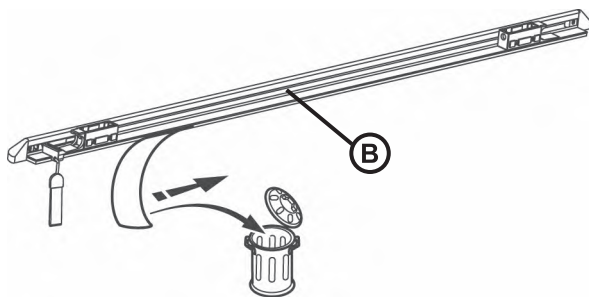
UTILISER L'ENCOCHE SUPÉRIEURE  
SI LA PINCE EST TROP SERRÉE.



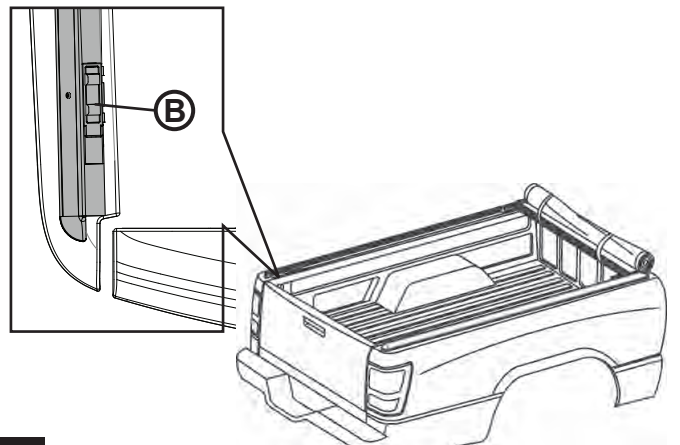
8



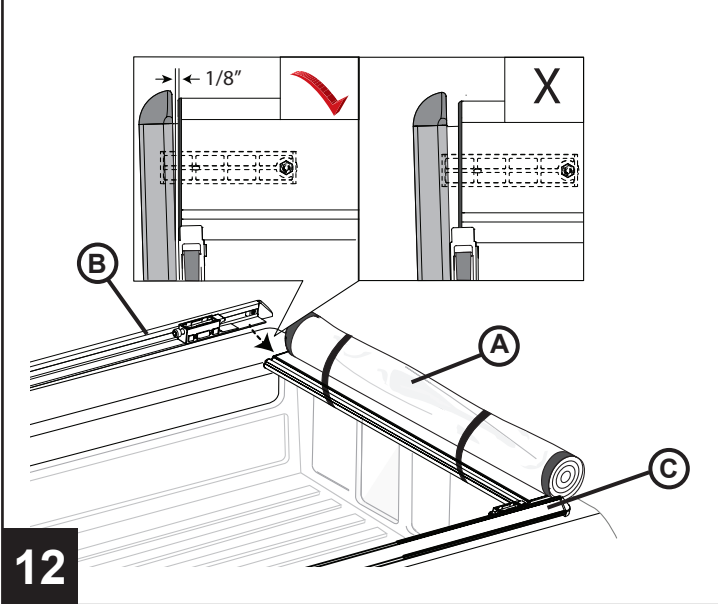
9



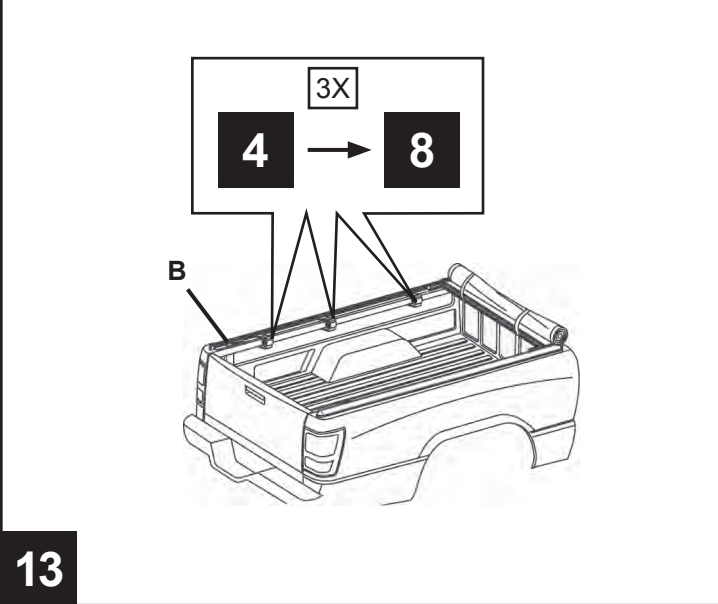
10



11

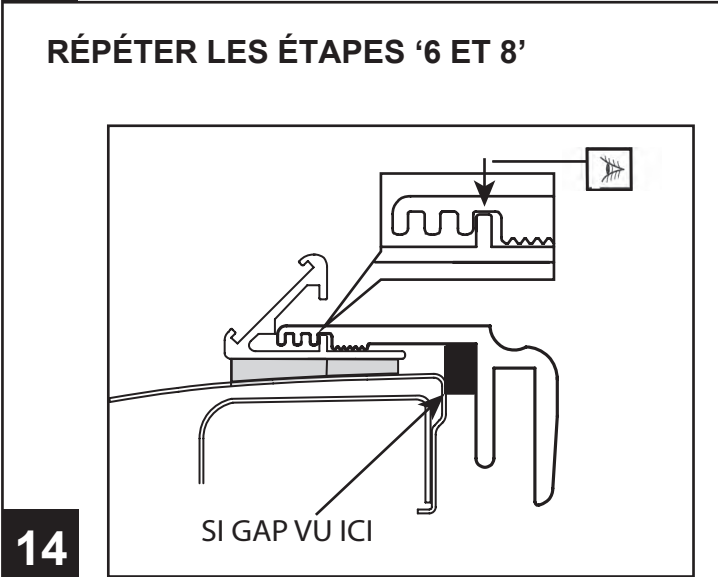


12

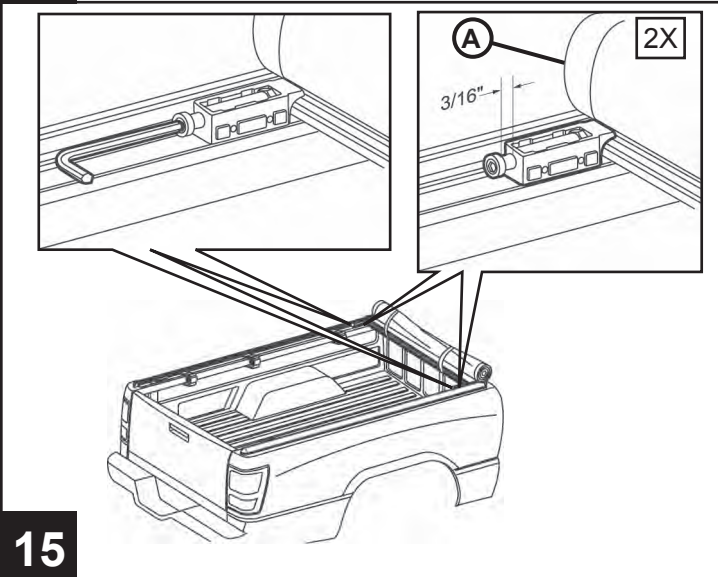


13

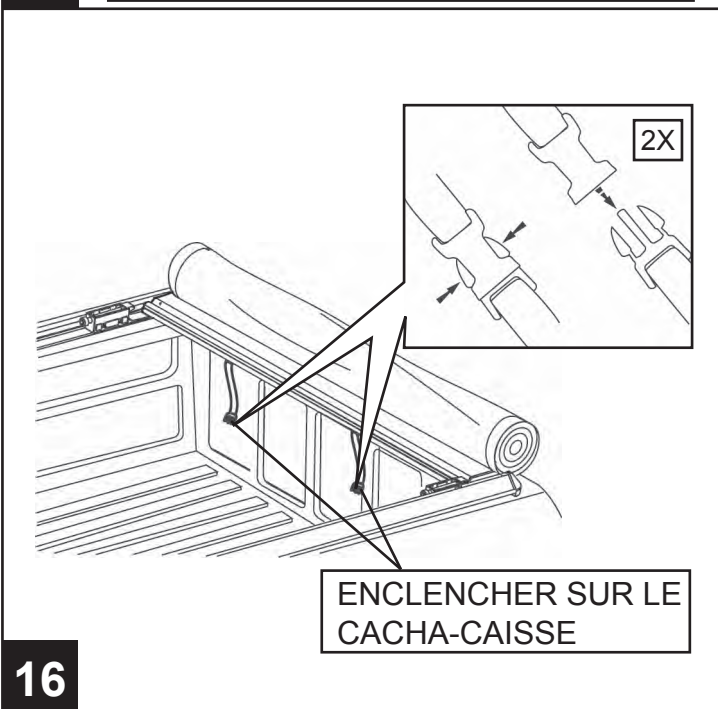
RÉPÉTER LES ÉTAPES '6 ET 8'



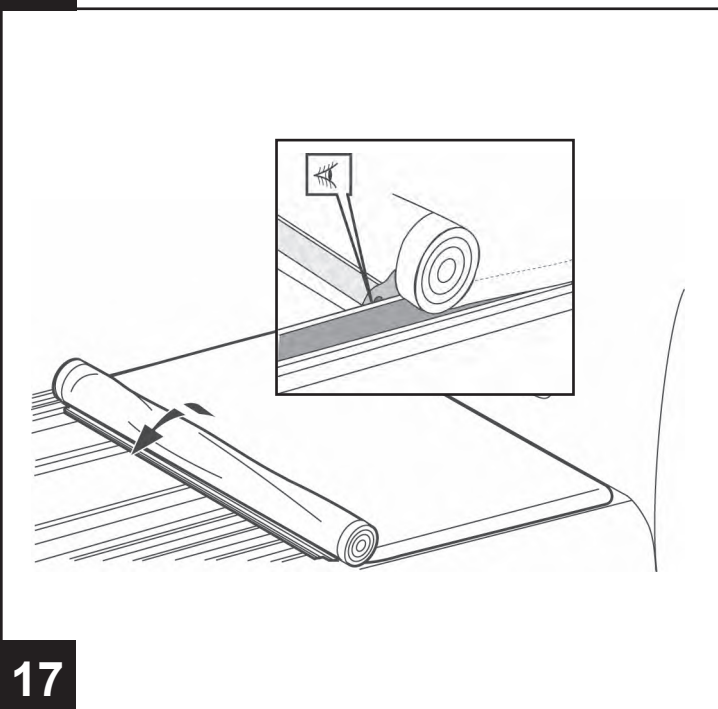
14



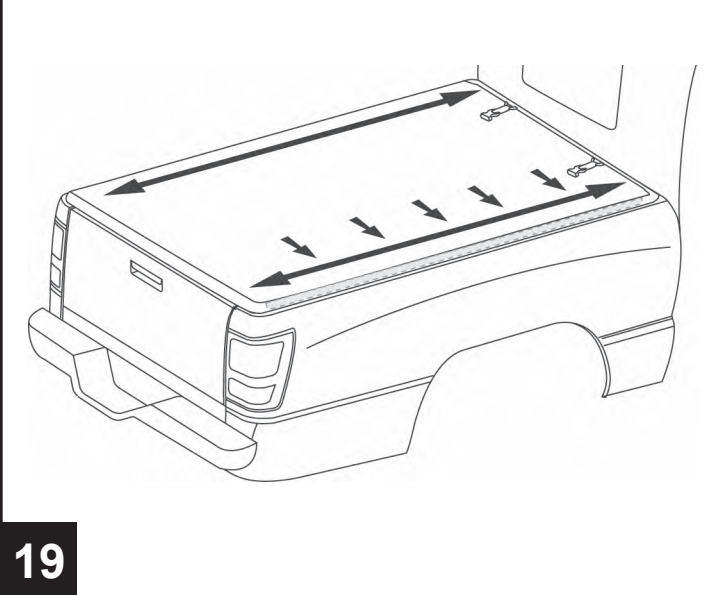
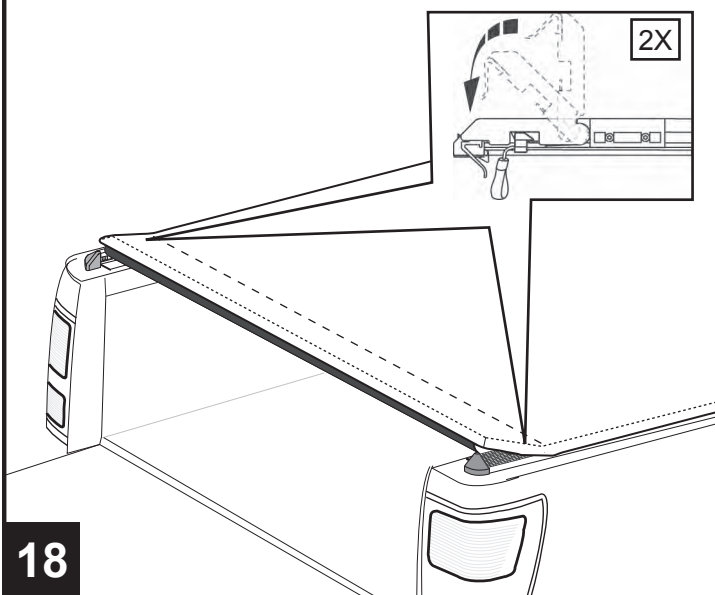
15



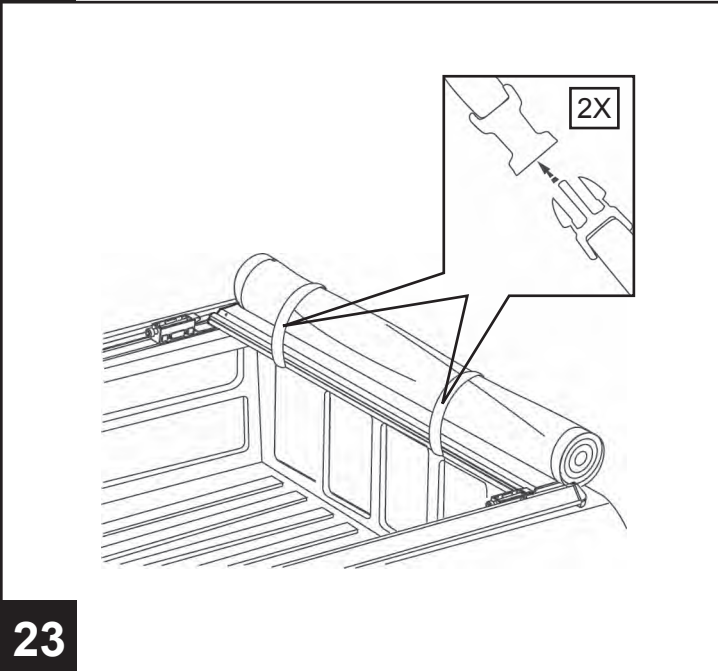
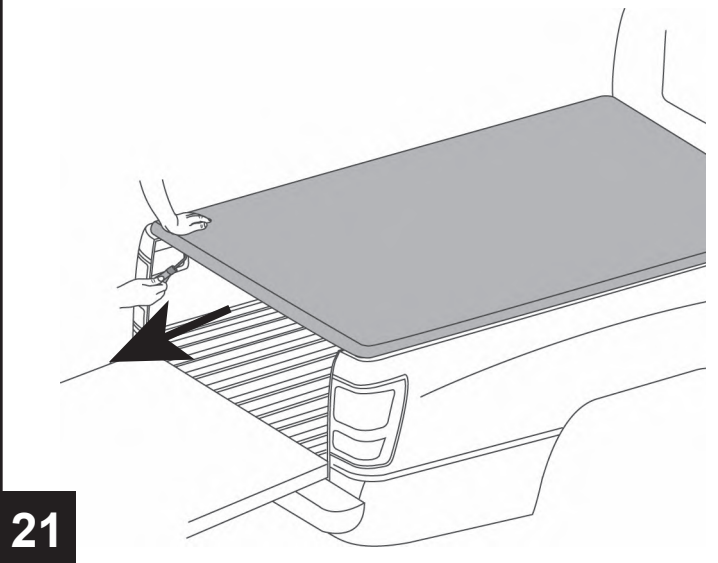
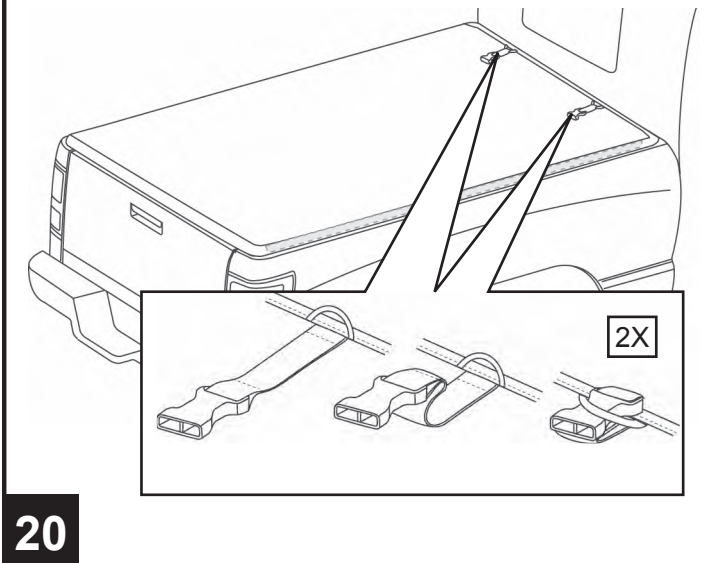
16



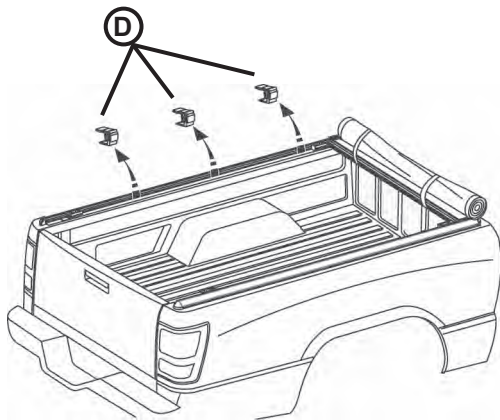
17



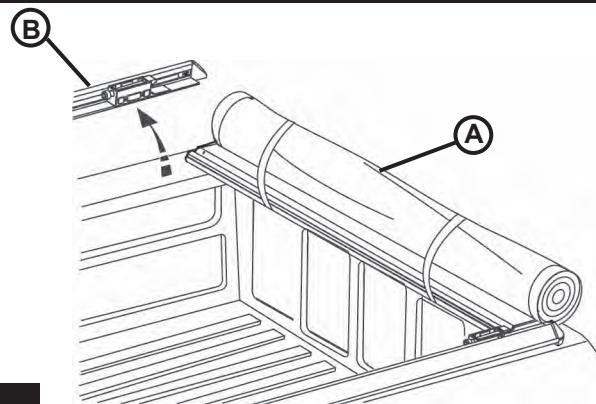
**POUR RETIRER LE CACHE-CAISSE**





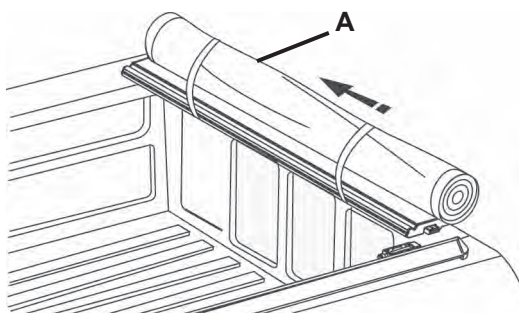


24

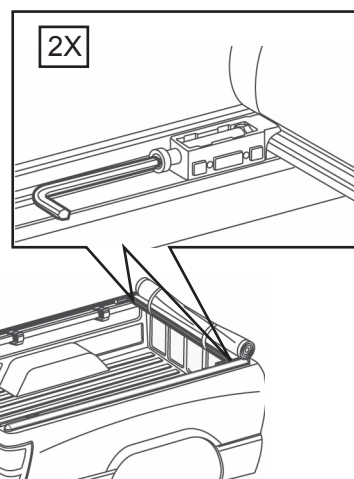


25

**POUR RÉGLER LA COUVERTURE**



26



**MAINTENANCE PREVENTIVE ET SOINS DE LA PART DU CLIENT**

- Laver uniquement avec du savon doux et sécher avec un chiffon propre.
- Ne jamais utiliser de solvant de quelque sorte que ce soit.
- Les lave-autos avec jet d'eau sous pression sont sécuritaires à condition de tenir la lance à au moins 2 pieds (60cm) du cache-caisse.
- Pour nettoyer votre cache-caisse, il est recommandé d'utiliser des produits de la même qualité que ceux normalement utilisés pour les toits en vinyle. Si vous utilisez un protecteur, assurez-vous qu'il est à base d'eau.



**AVERTISSEMENT ET MISE EN GARDE**



- Le cache-caisse **DOIT ÊTRE** fermé ou fixé solidement avec des sangles lorsque le véhicule est en mouvement.
- **NE RIEN** poser de lourd sur le cache-caisse. Cela endommagerait le cadre du cache-caisse.
- **NE PAS** laver le véhicule dans un lave-auto à brosses mécaniques: n'aller que dans les lave-autos munis de brosses douces.
- Lorsque le cache-caisse est en position ouverte, des blessures graves et des dommages importants peuvent survenir si le véhicule est conduit sans que les deux boucles noires à l'avant du cache-caisse soient attachées.