



MOPAR®

# 5<sup>th</sup> Wheel Hitch Mounting Adapter

82213667

1

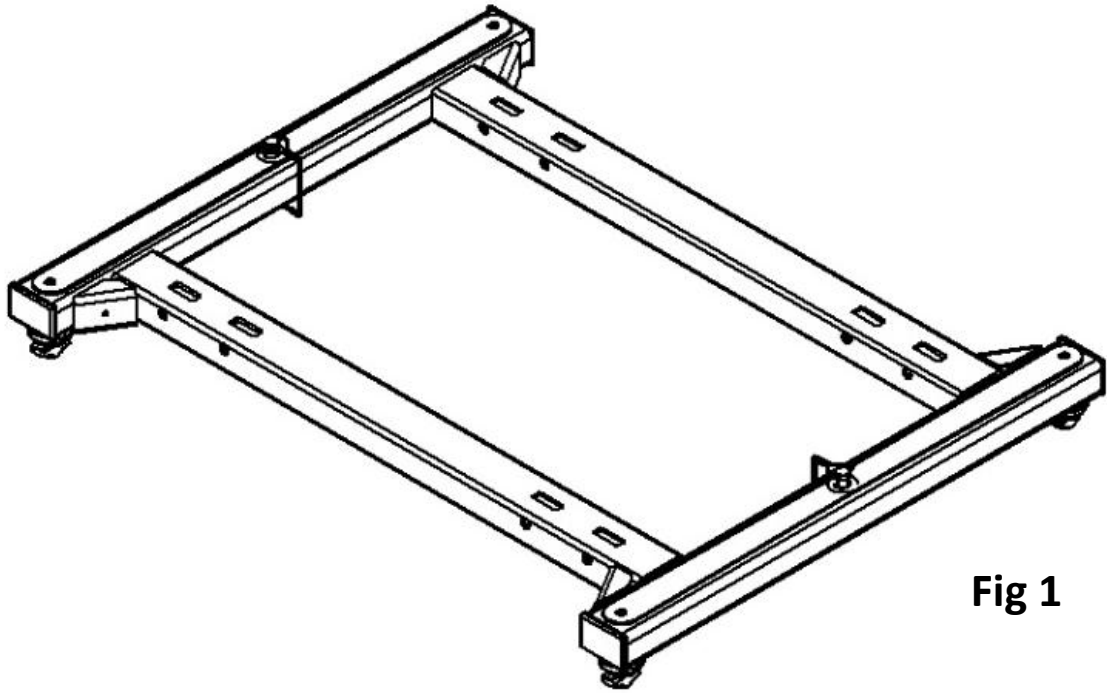
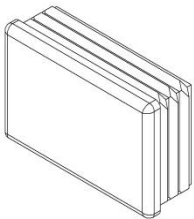
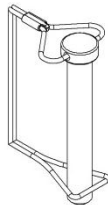


Fig 1



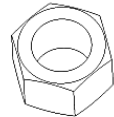
4x



2x



4x



4x

## Tools Required

SAE J2638 Rated @ 25,000 lbs

- Needle nose pliers
- 3/8" Allen wrench
- 1.5" Closed wrench

# 5<sup>th</sup> Wheel Hitch Mounting Adapter

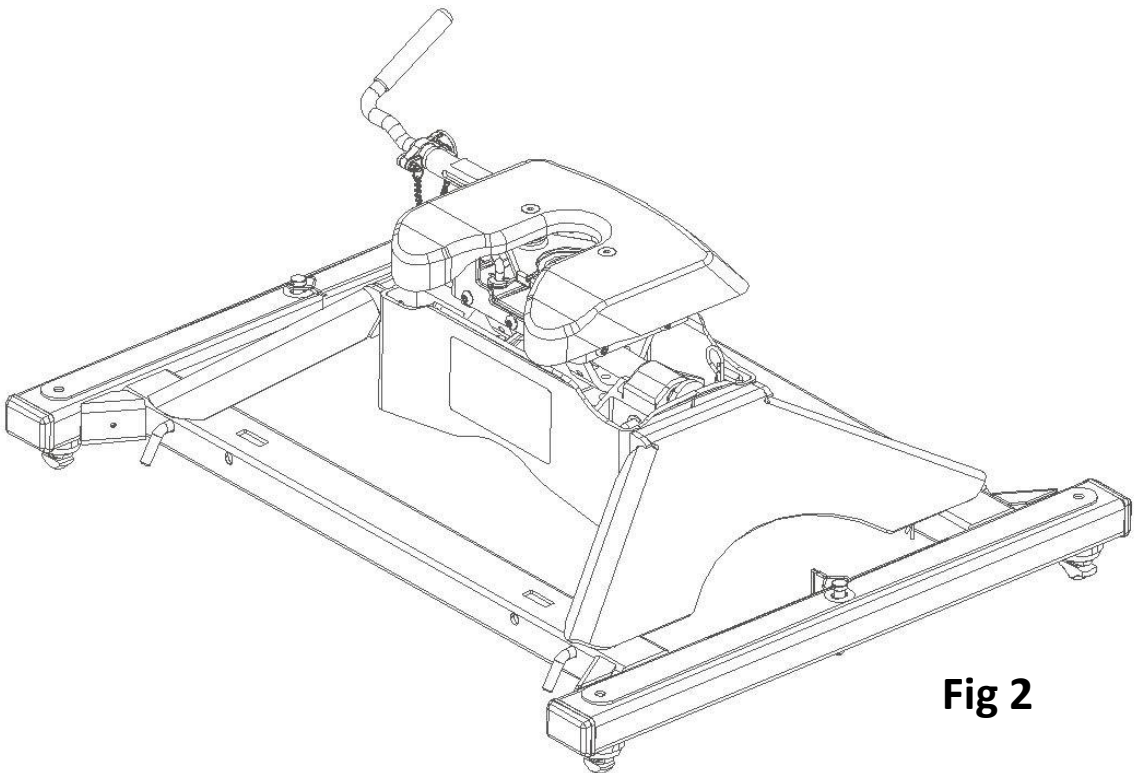
## INDEX

SYSTEM USE.....	2
SYSTEM ADJUSTMENT.....	3
INSTALLATION.....	4
REMOVAL.....	4

## SYSTEM USE

Your Mopar 5<sup>th</sup> Wheel Adapter Kit will allow you to hook any Industry standard rail mounted hitch to your truck. Using patented “T-Bolt” hardware this kit mounts to the under bed mounting brackets of your truck with a simple twist of a lever, and when a clean, empty bed is desired it takes only the same simple twist of the handles to unlock the system. With the Adapter Kit installed in the truck hooking up any above bed mounted 5<sup>th</sup> wheel only requires the standard pull pins.

**NOTE: If the system is being used for towing any trailer larger than 20,000 lbs it is required that the heavy duty bolts are used instead of the standard pull pins.**



**Fig 2**

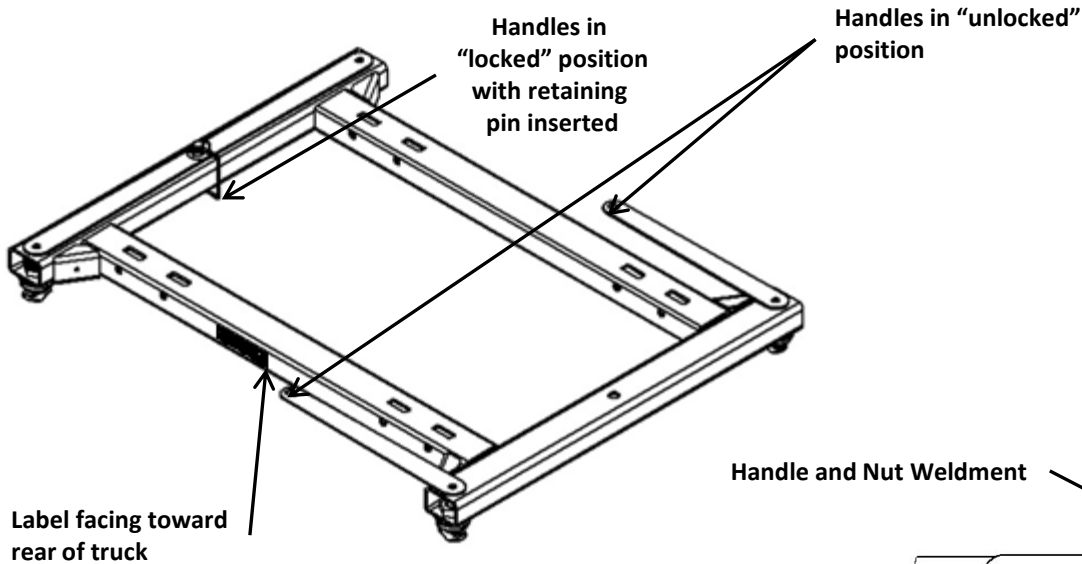
**⚠ WARNING:**

Failure to follow all of these instructions may result in death or serious injury

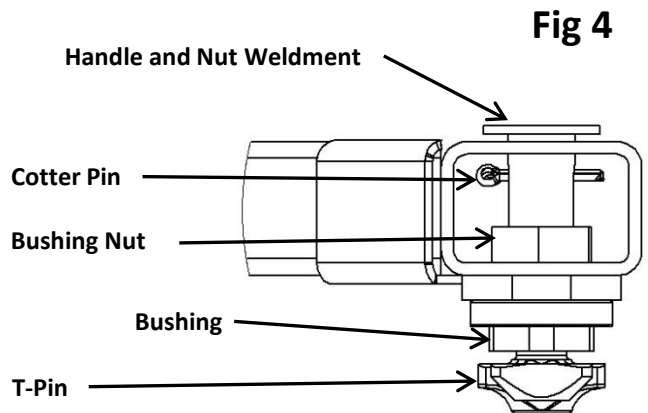
# 5<sup>th</sup> Wheel Hitch Mounting Adapter

## System Adjustment

The Mounting Adapter has been assembled using the nominal dimensions, however it is important to do an initial install with just the Adapter to ensure that the connection is both secure and sufficiently tight. To do this rotate the four handles to the “unlocked” position, shown in figure 3, then drop the Adapter kit into the four Under Bed Mounting Pucks, paying attention to the orientation of the labels. The system is not symmetric, it is important that the cross-member label can be read from the rear of the truck.



**Fig 3**



**Fig 4**

If when the handles are in the “locked” position and the adapter is tight and does not have excessive tolerance, install the supplied tube end caps and the kit is ready to use with your 5<sup>th</sup> wheel. However if the system is loose when the handles are locked, or the bushings do not fall into the under-bed pucks, it is crucial that the system is adjusted. First remove the cotter pin from between the handle and nut weldment. If the system does not fall into the under-bed pucks, rotate the T-pin until it becomes disconnected from the handle weldment. Using a closed 1.5” wrench to loosen the bushing nuts and move the bushings until the kit falls into place. Once in place tighten the bushing nuts against the tube. Re-thread the T-pins into the handle weldment. Tighten the T-pins into the nut weldment, until the adapter kit is as tight as possible to the frame while still being able to rotate the handles. Replace the cotter pin, deform to retain pin, and install the tube end caps.

# 5<sup>th</sup> Wheel Hitch Mounting Adapter

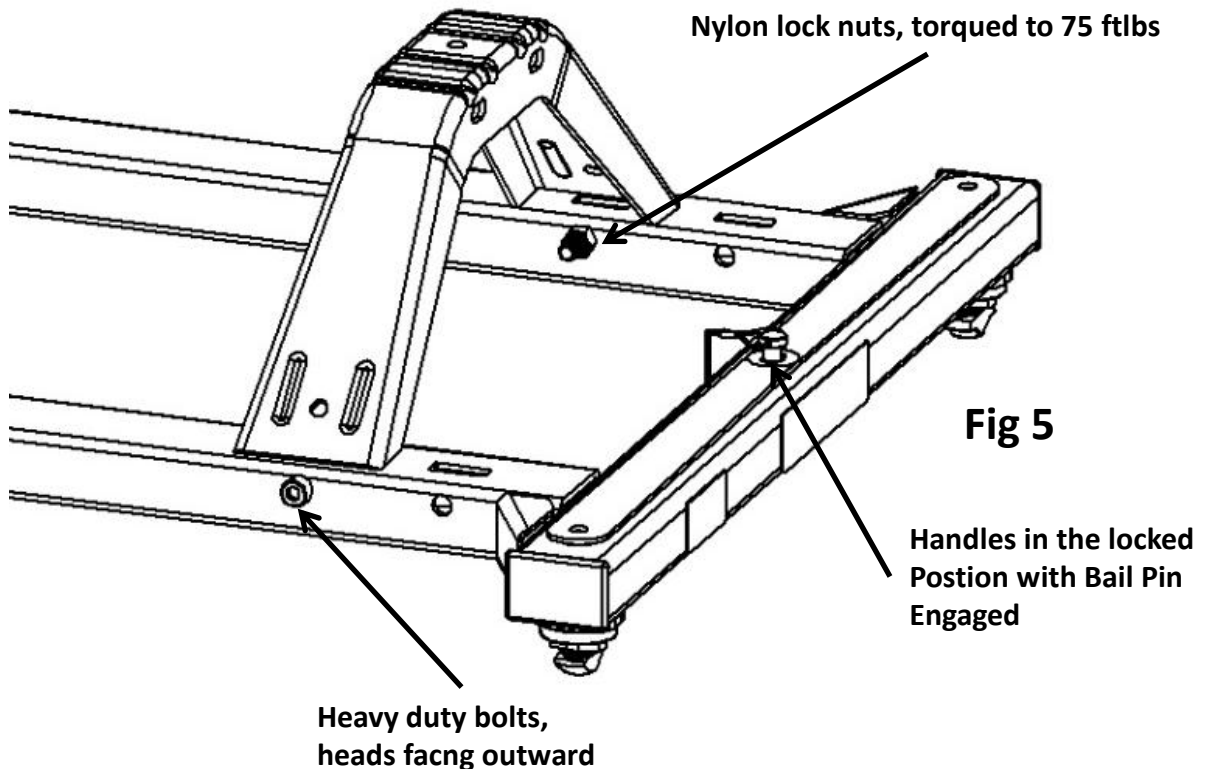
## Installation

Once all of the T-pins have been adjusted to the exact heights, insert the four plastic tube covers by hitting them with a rubber mallet or placing a board across the insert and striking it with a hammer. Then with all the handles in the unlock position drop the adapter into the under-bed mounting pucks, again checking that the cross-member labels are visible from the rear of the truck. Once the adapter is lying flat on the pucks rotate the handles to the locked position and pin the handles and the tube together using the supplied bail pins.

With the adapter now hooked up to the vehicle drop in the industry standard above bed mounted 5<sup>th</sup> wheel hitch. Keeping the arches loose to the cross-member will help facilitate the installation of the hitch. Then using the pull pins supplied with the 5<sup>th</sup> wheel hitch pin the hitch to the adapter as seen in figure 2.

### **WARNING:**

If towing a 5<sup>th</sup> wheel over 20,000 lbs it is required to use the supplied heavy duty socket head bolts instead of the standard pull pins. Failure to do this could result in severe damage.



## Removal

To remove the adapter, the 5<sup>th</sup> wheel has to be removed first. Again by removing the pull pins, or heavy duty bolts, and lifting the hitch out of the adapter's slots. Then remove both of the bail pins and rotate the handles to the unlocked positions. Lift and remove the adapter from the vehicle then store with handles in the closed position with the bail pins clipped and locked in position.