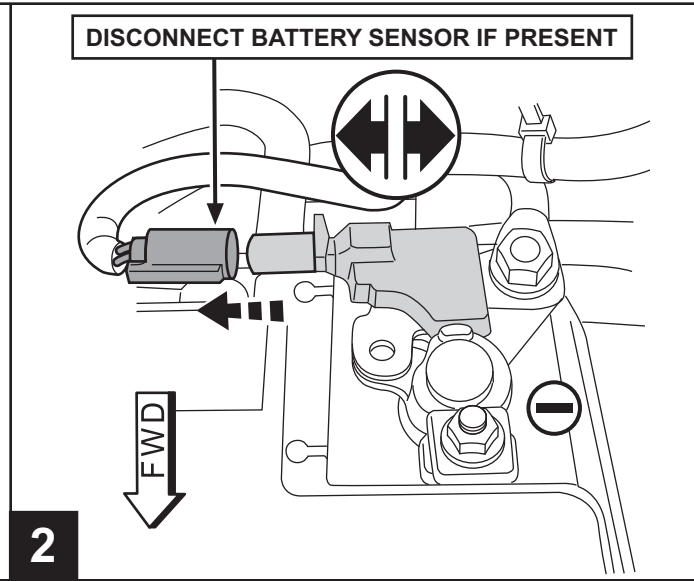
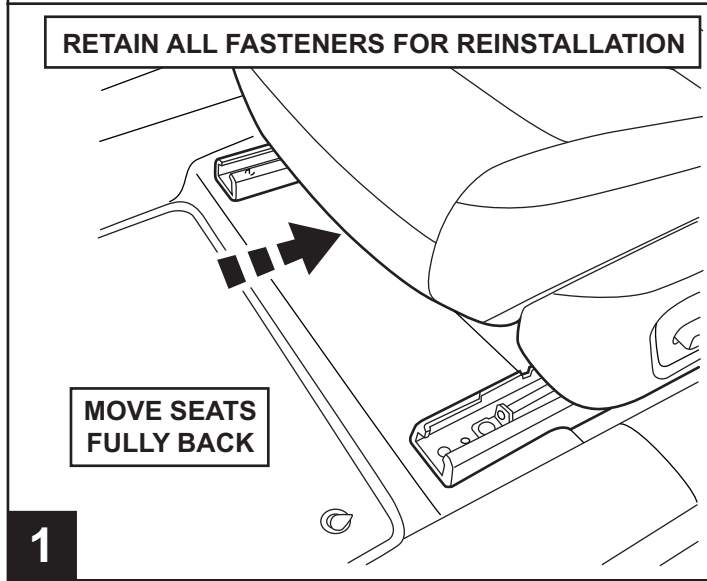
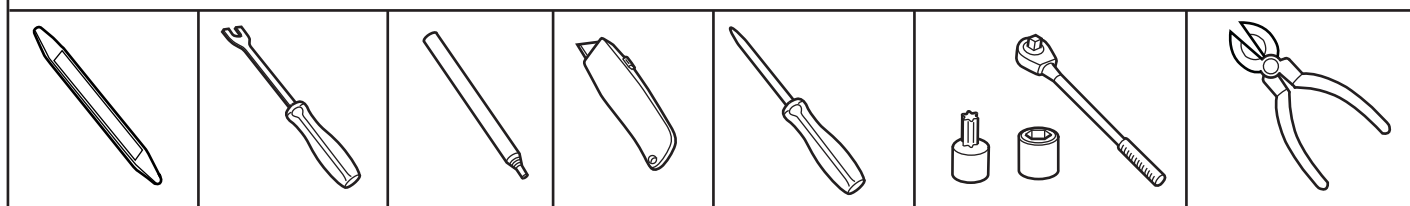
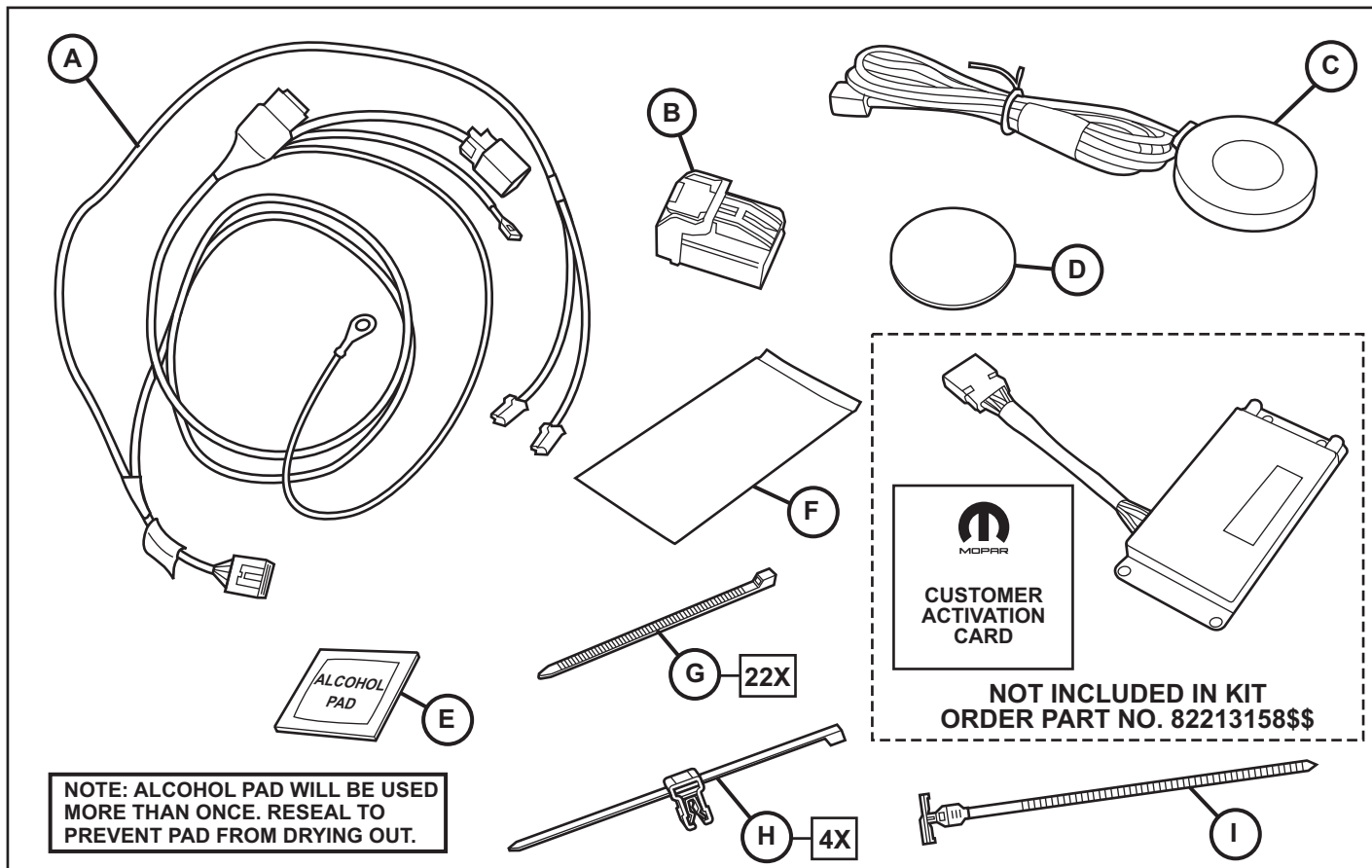




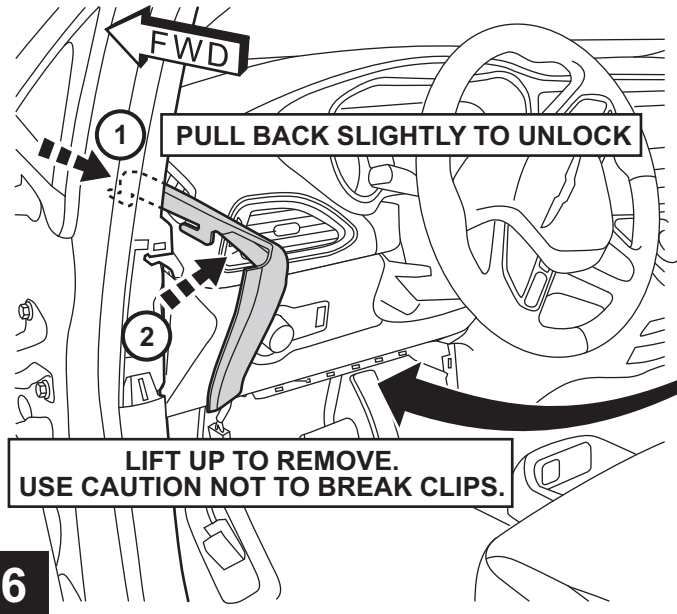
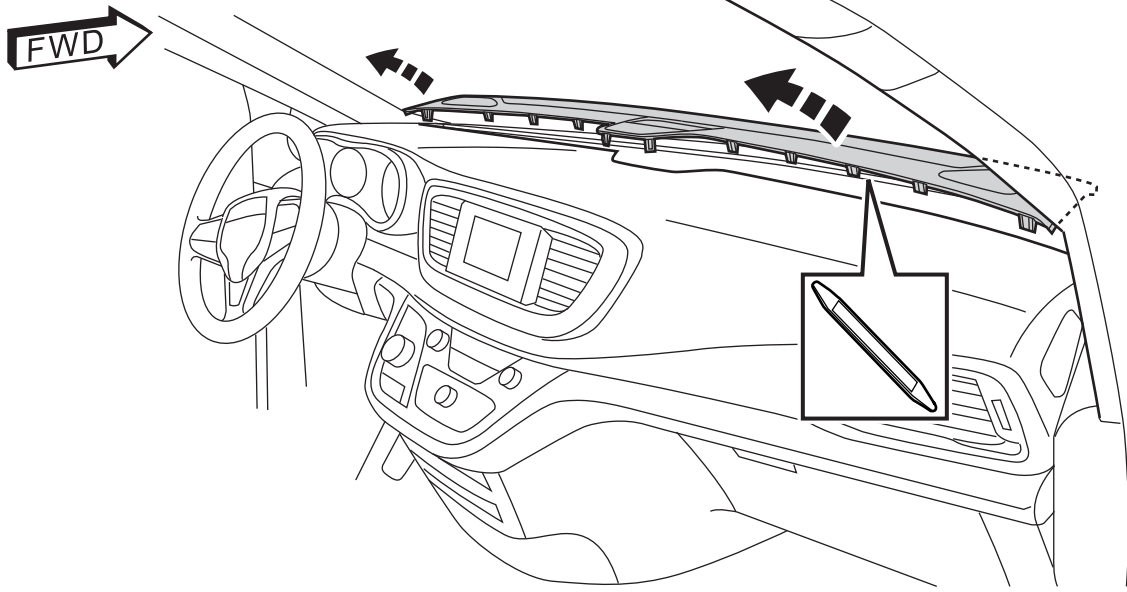
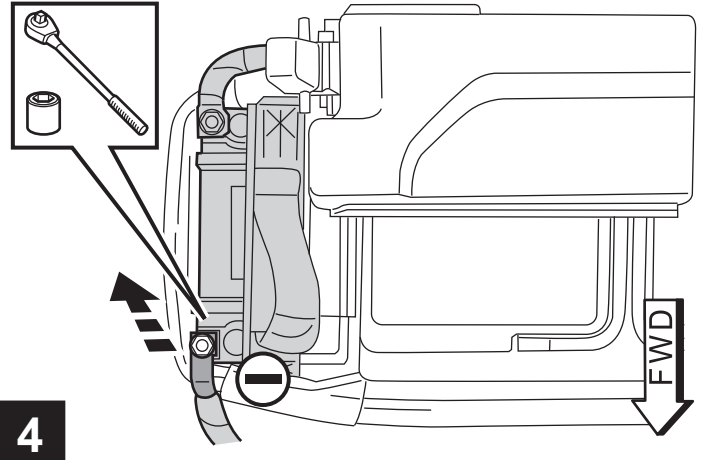
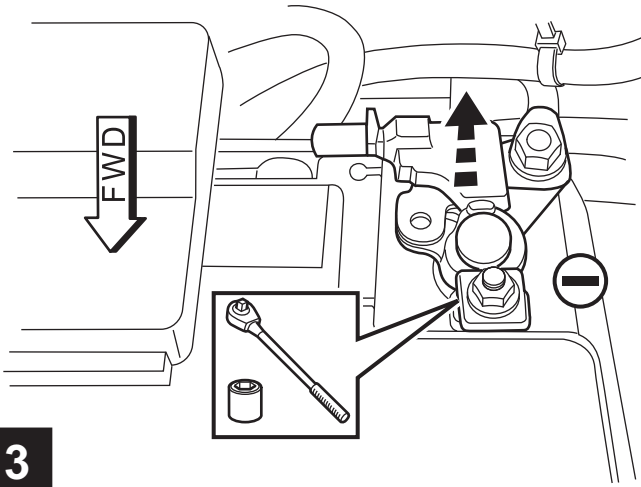
PACIFICA MOPAR CONNECT

www.mopar.com



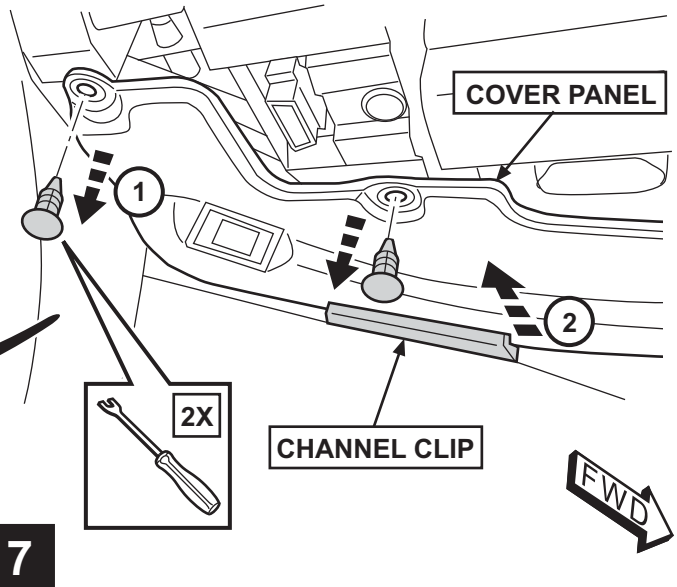
DISCONNECT NEGATIVE BATTERY TERMINAL

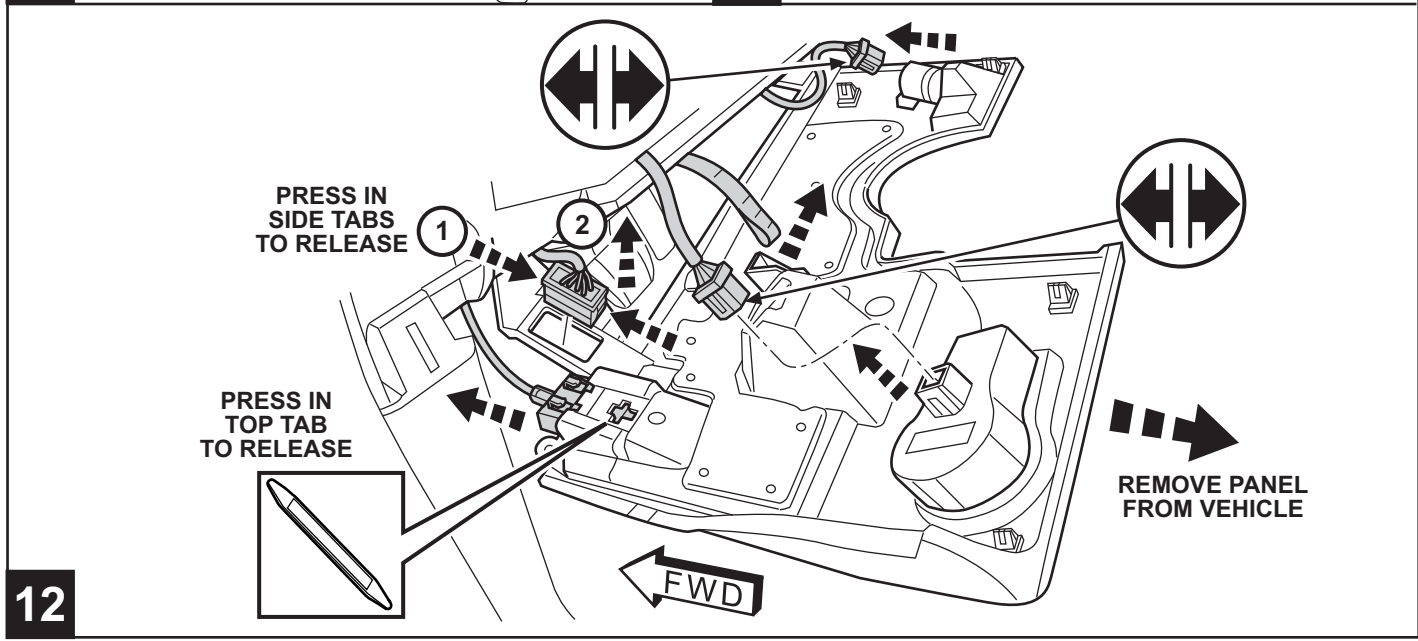
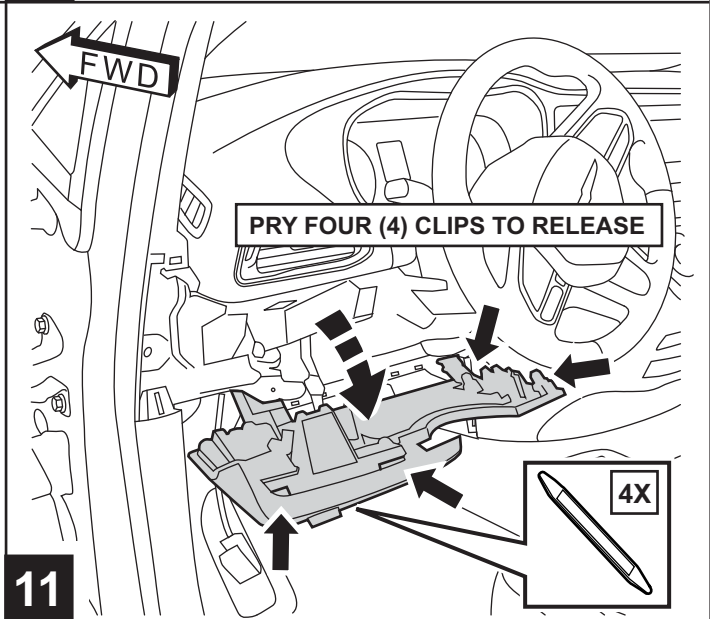
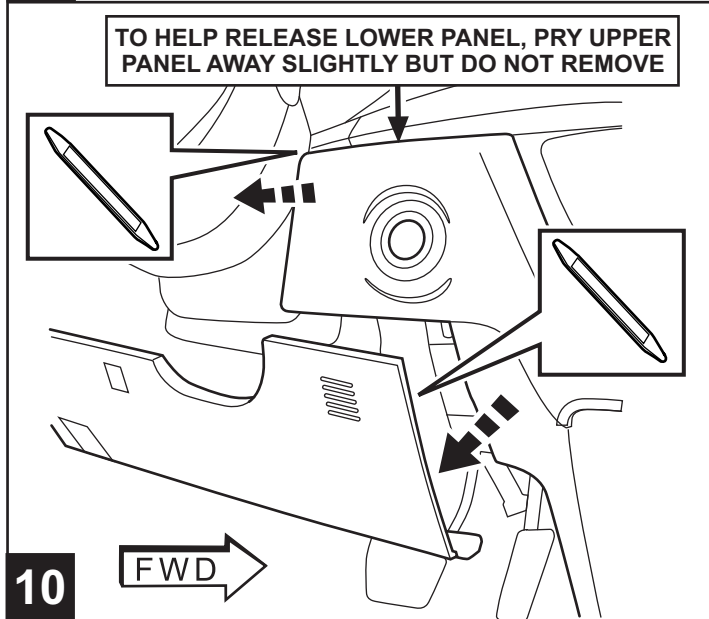
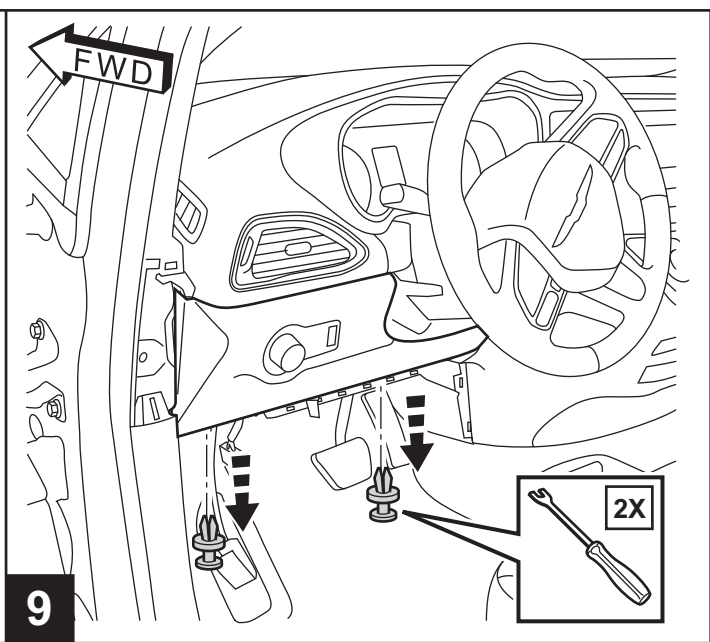
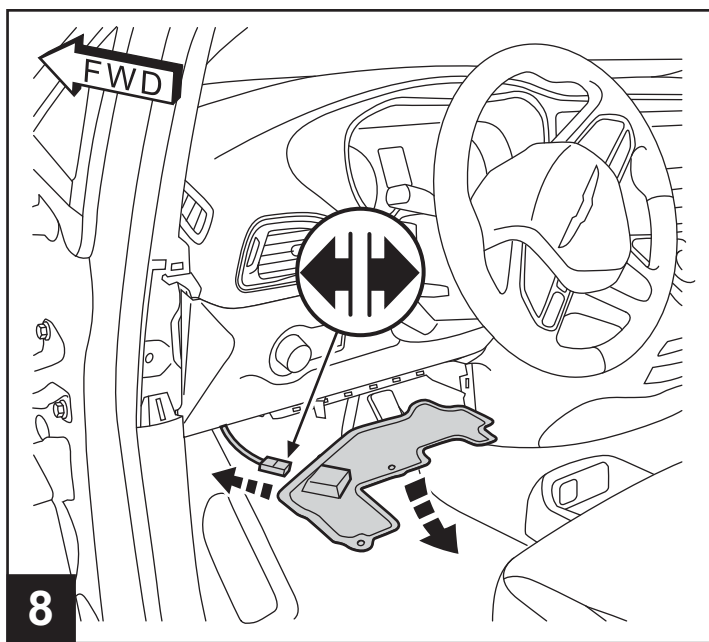
NOTE: ALSO DISCONNECT AUXILIARY BATTERY IF PRESENT

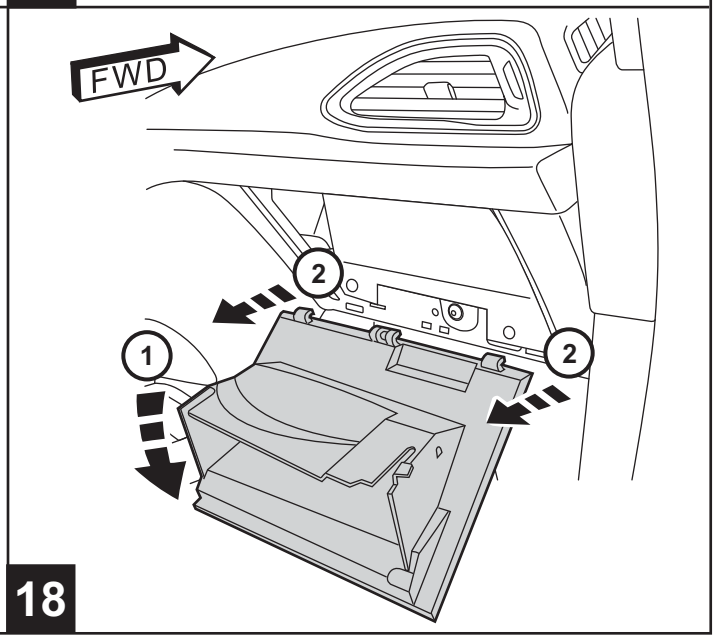
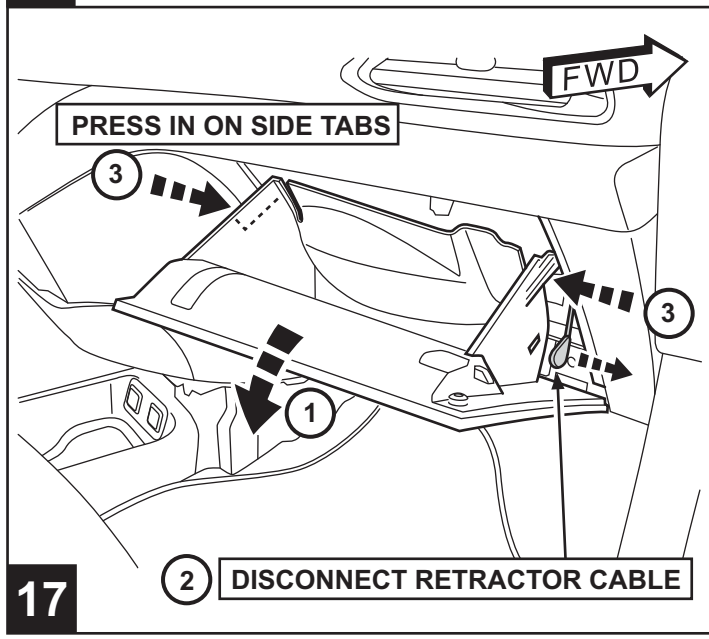
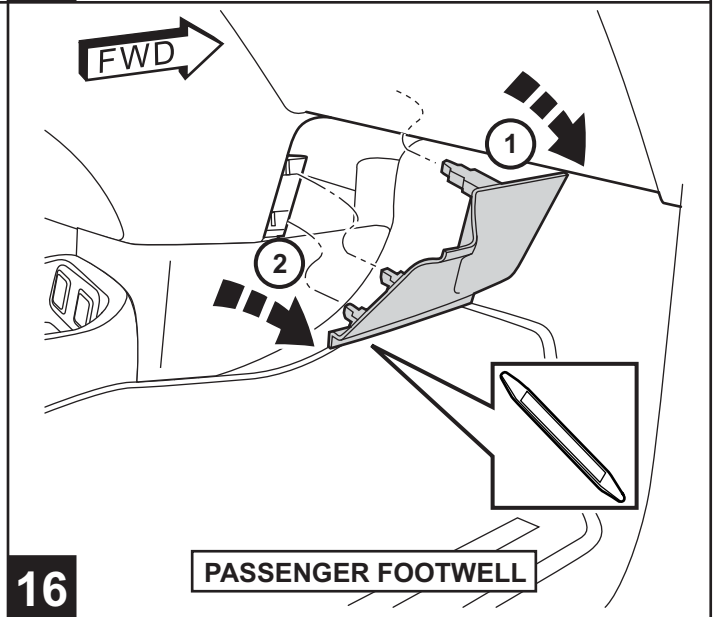
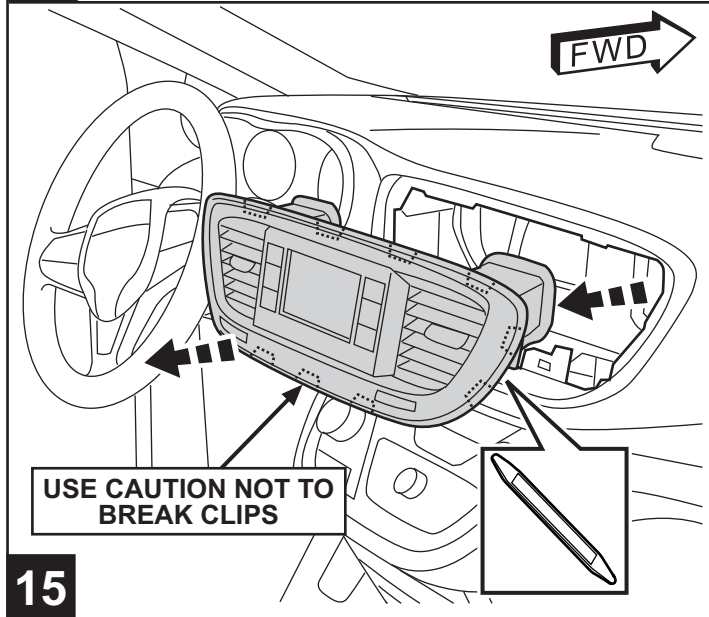
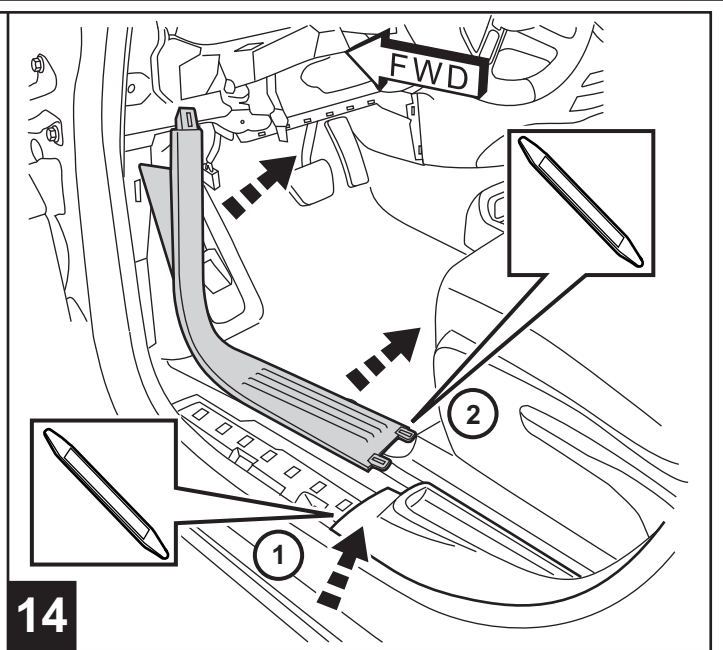
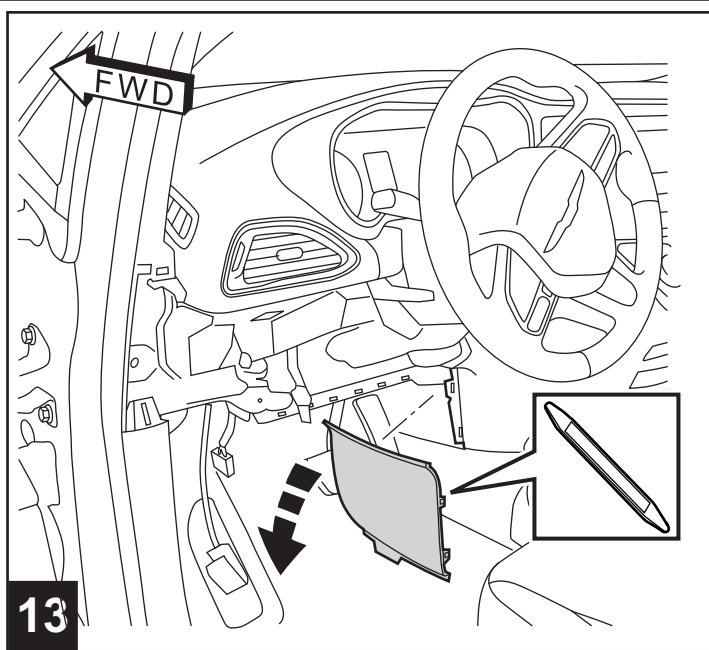


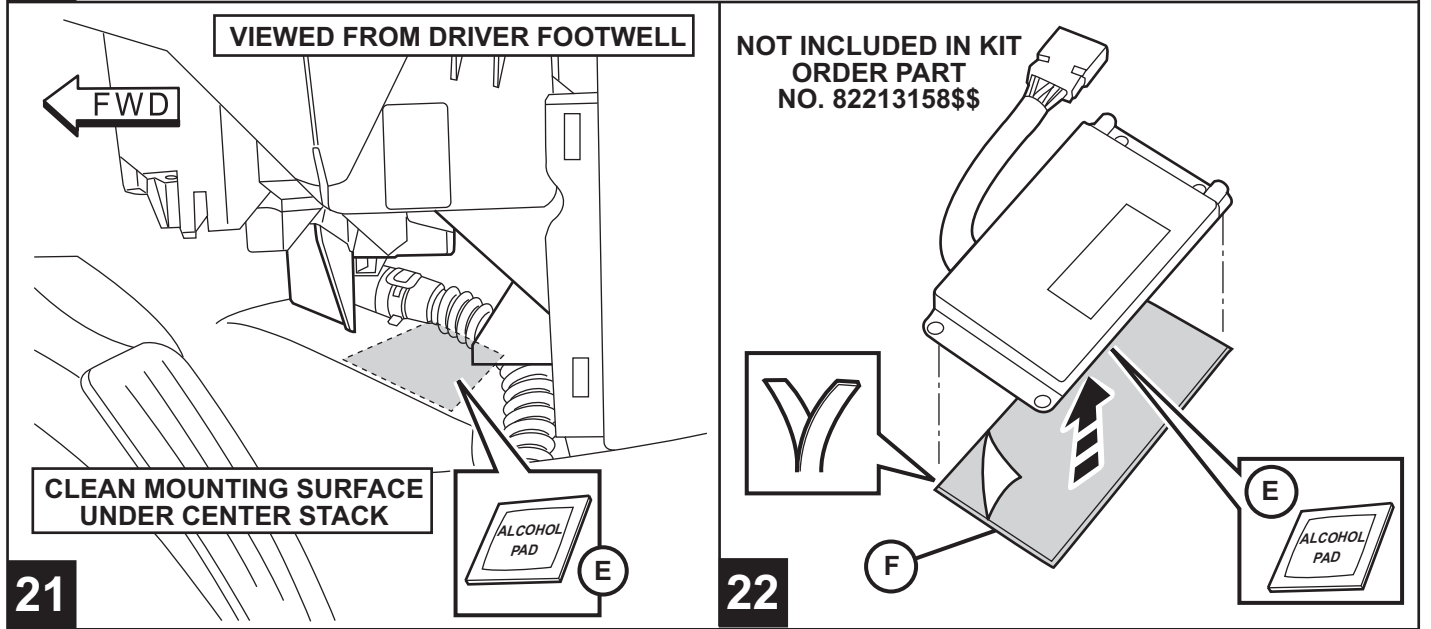
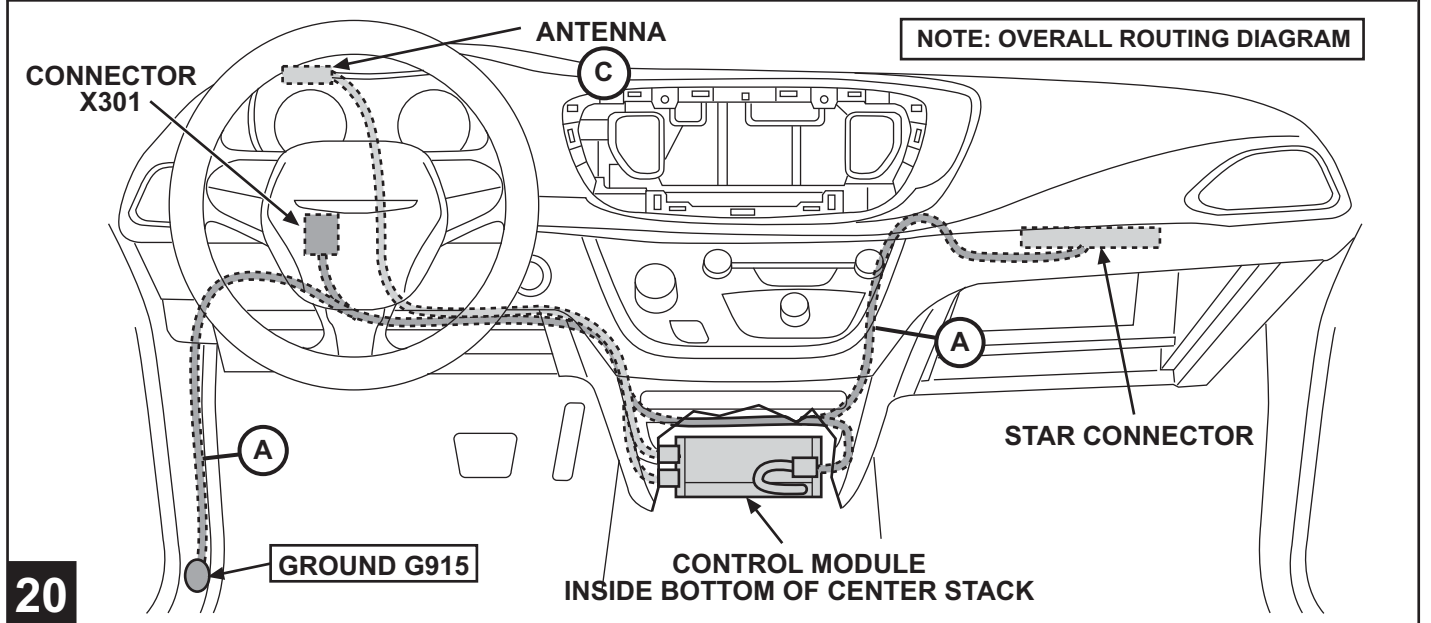
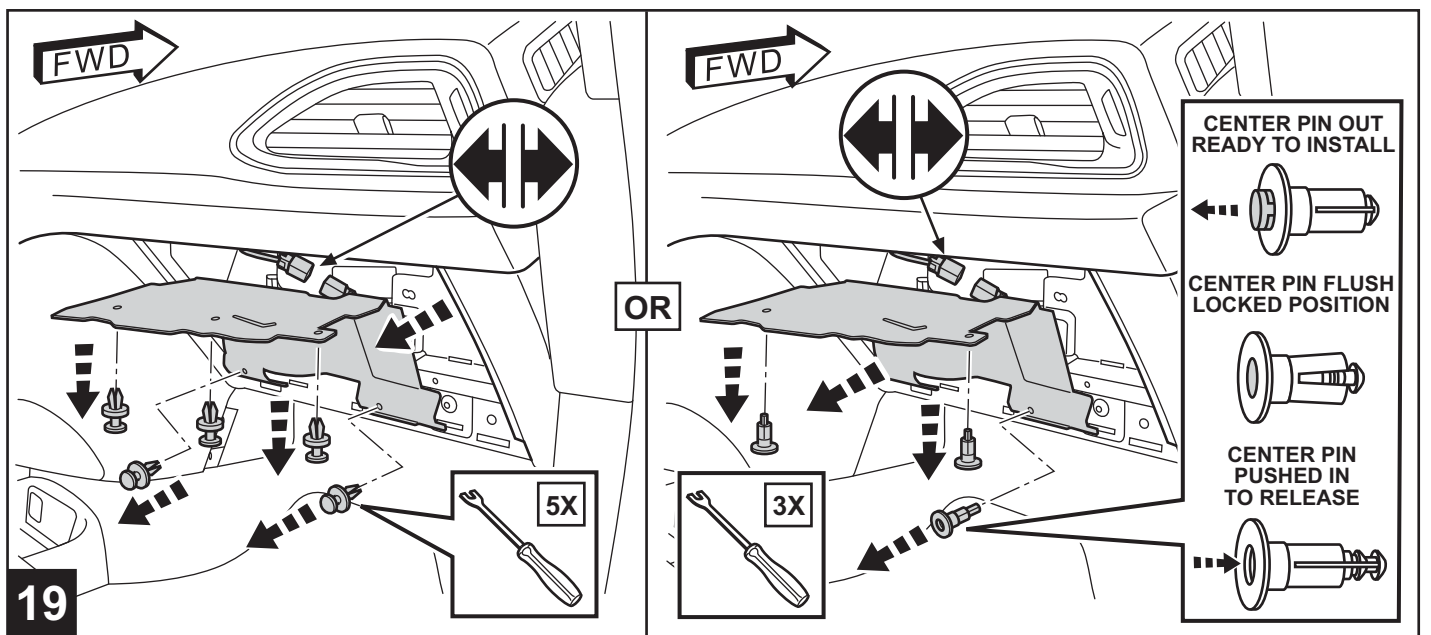
PULL BACK SLIGHTLY TO UNLOCK

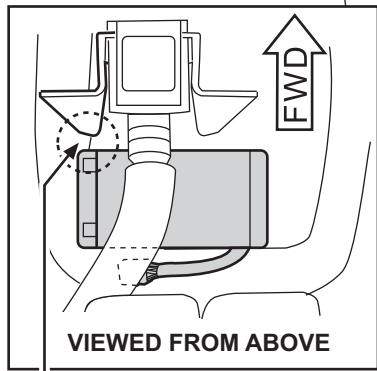
COVER PANEL



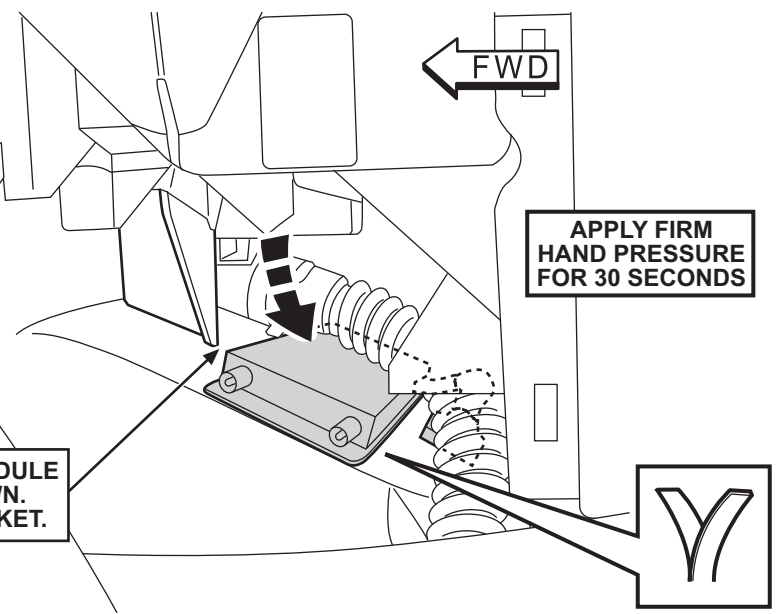




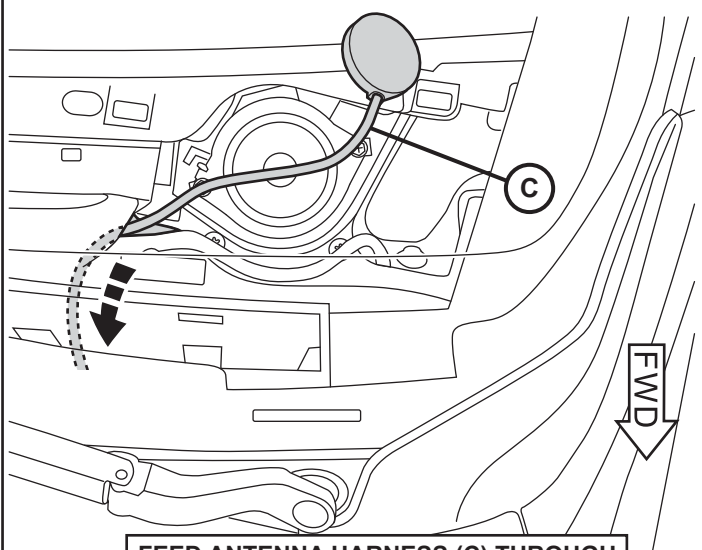




NOTE: POSITION TOP CORNER OF MODULE NEAR BRACKET CORNER AS SHOWN. DO NOT POSITION UNDER THE BRACKET.

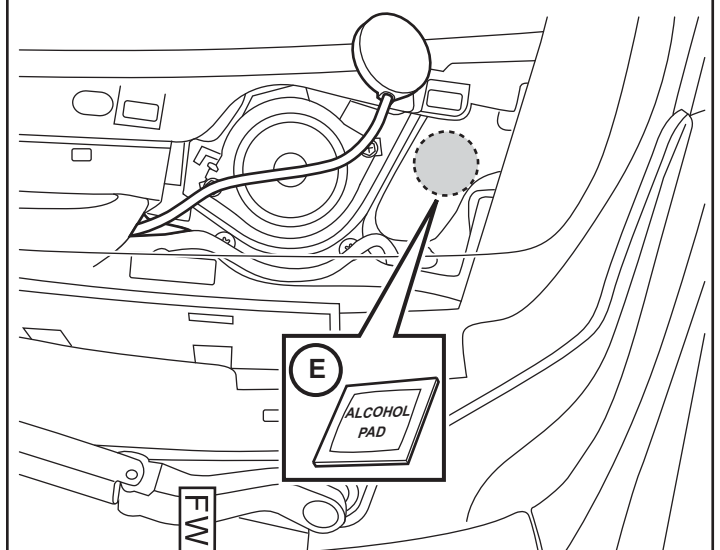


23

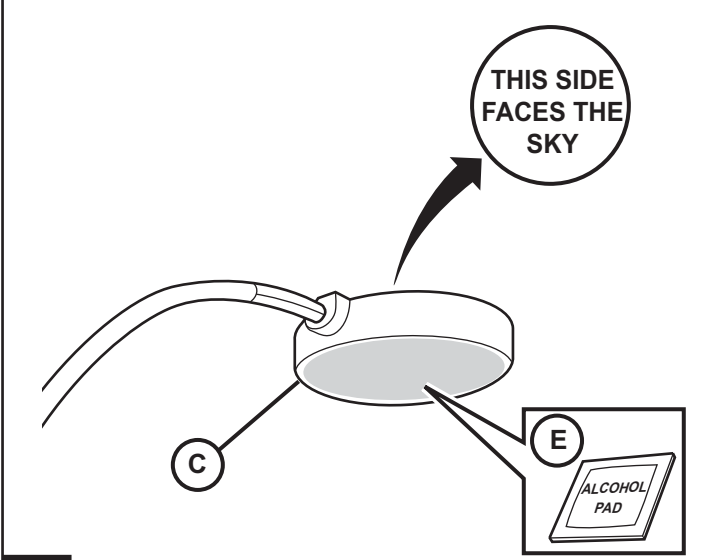


FEEED ANTENNA HARNESS (C) THROUGH HOLE AT BASE OF WINDSHIELD

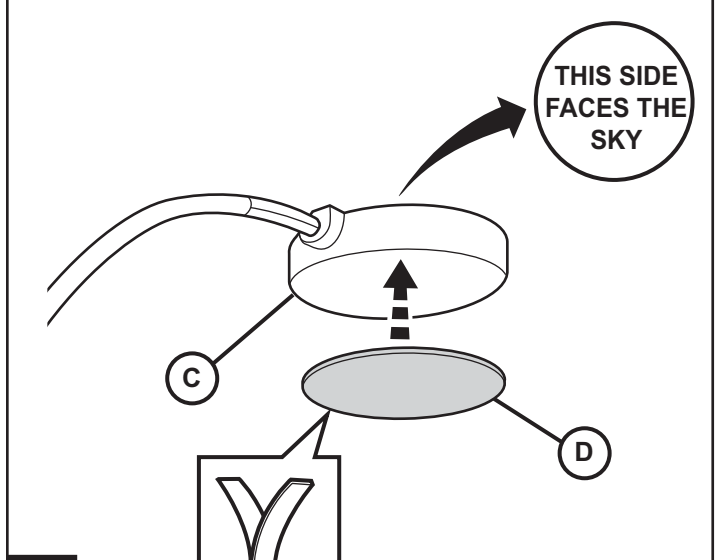
24



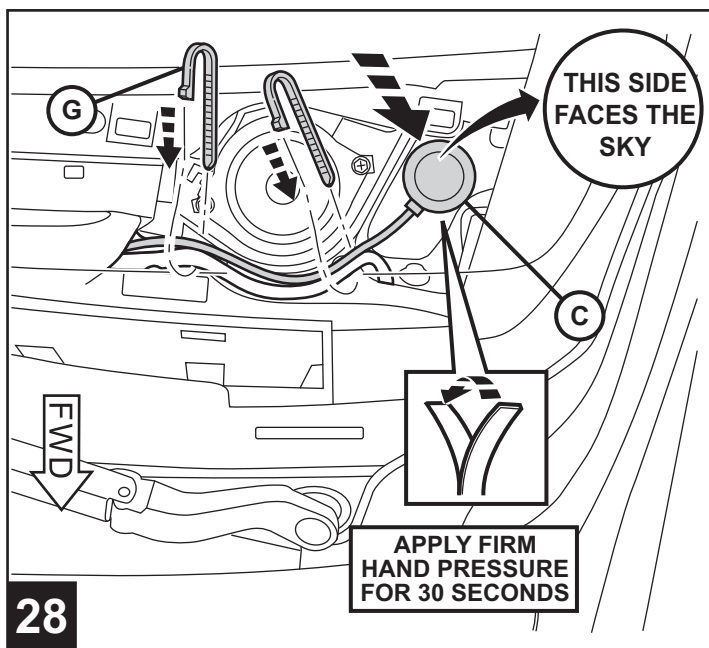
25



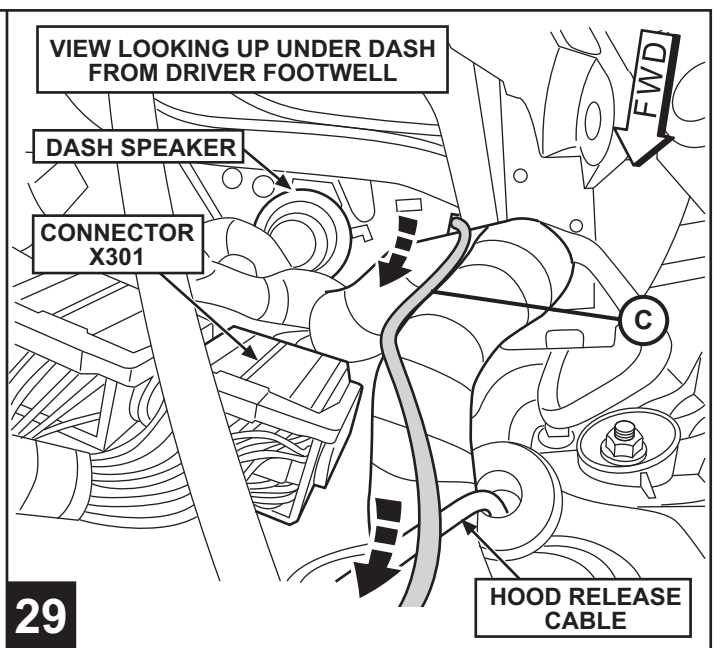
26



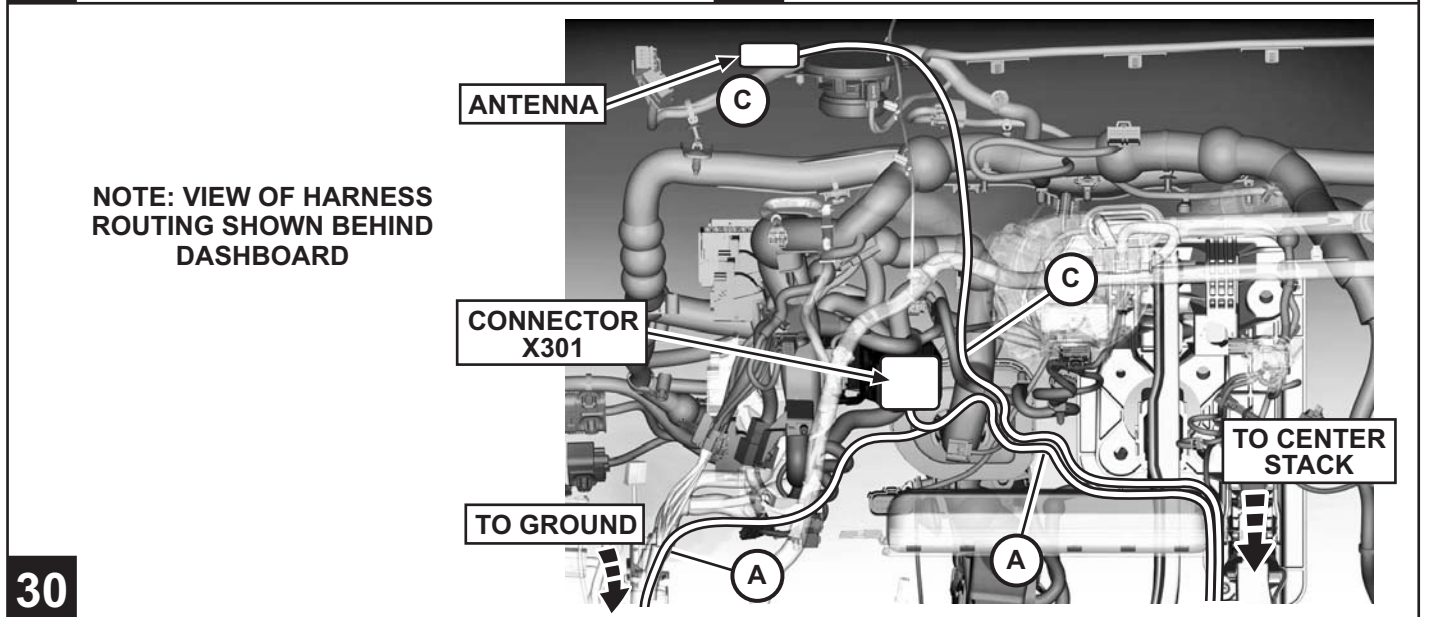
27



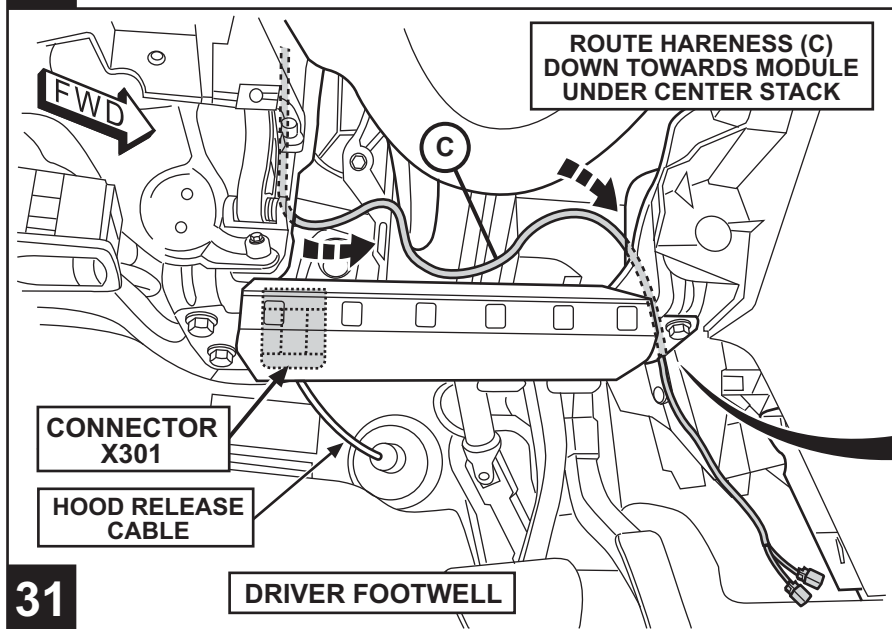
28



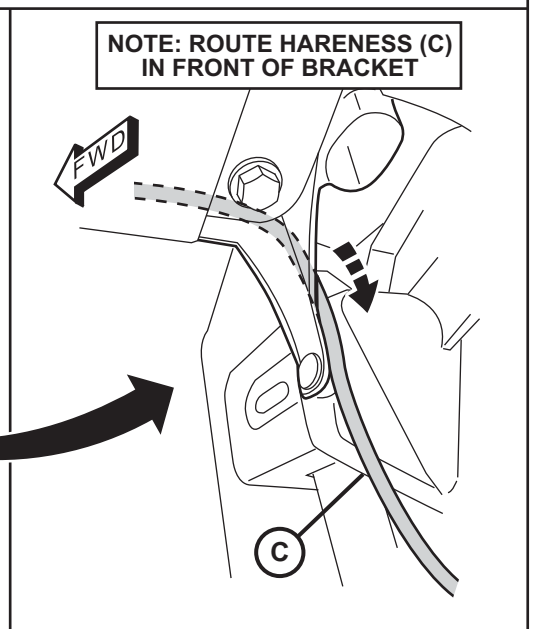
29

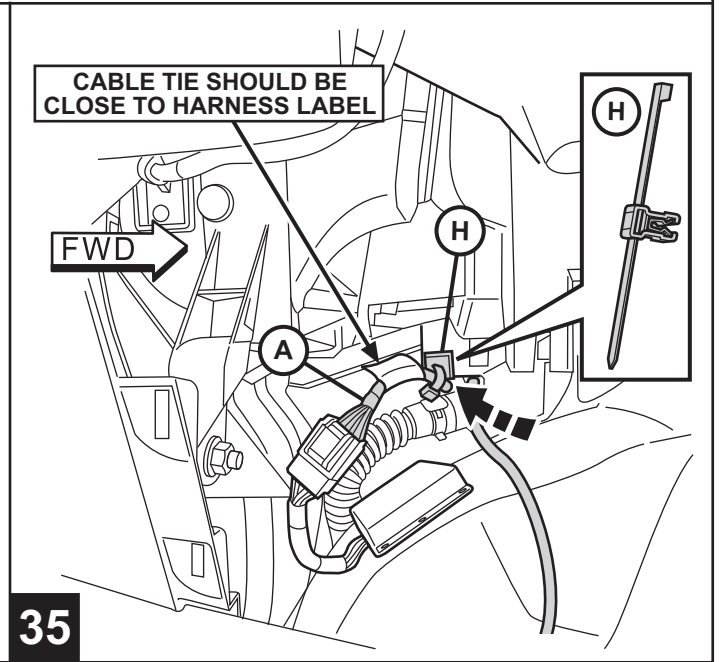
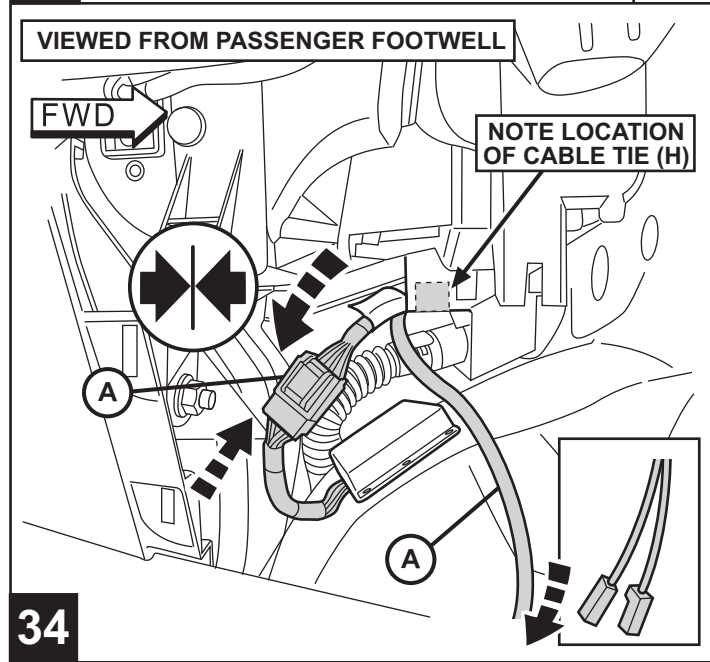
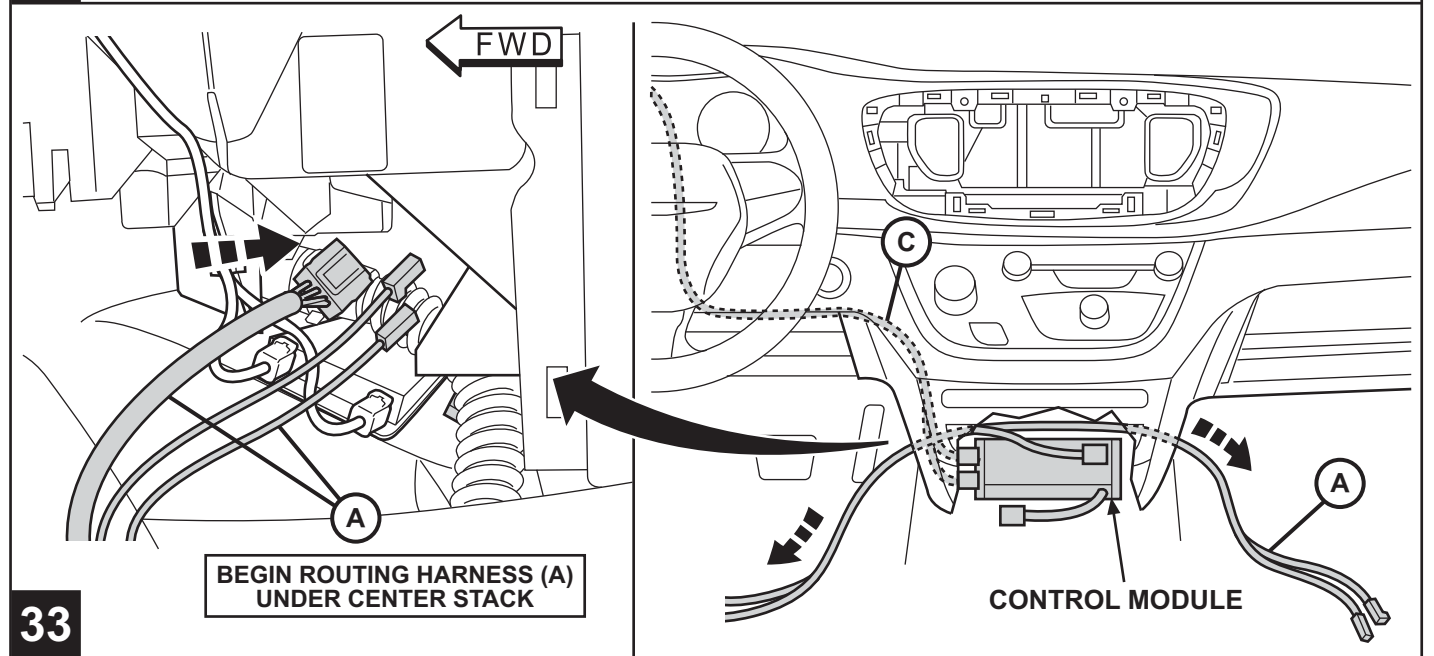
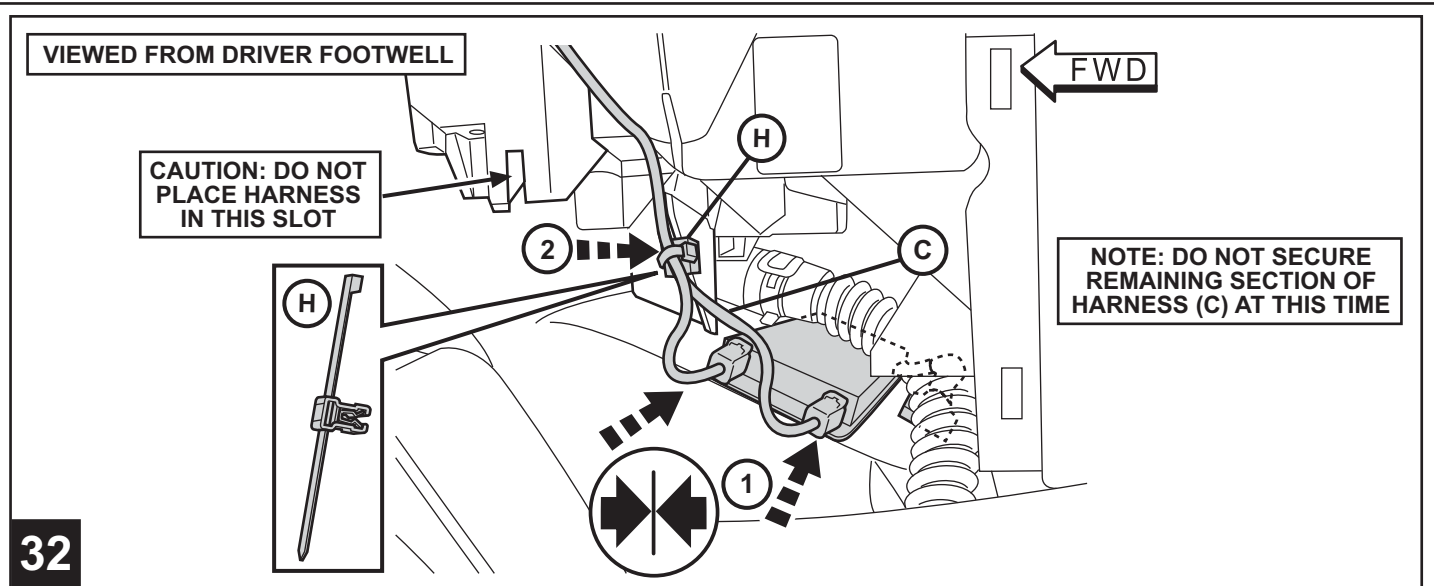


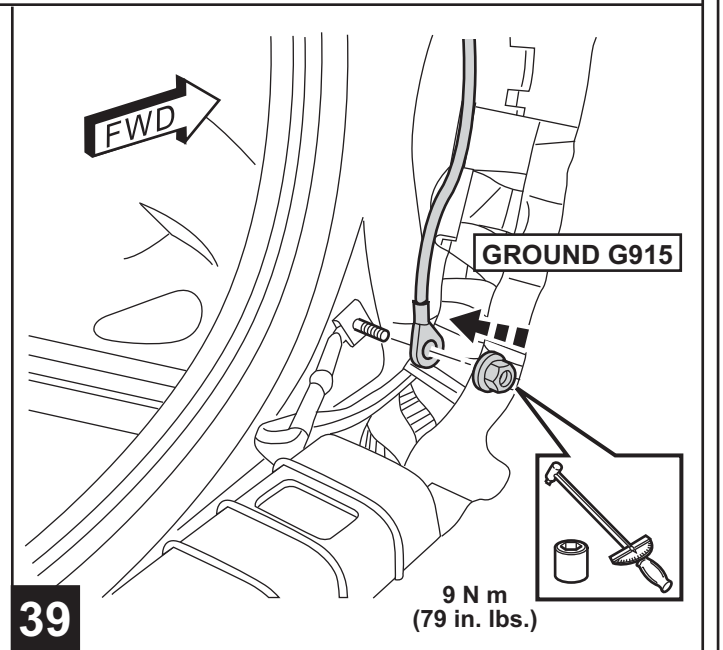
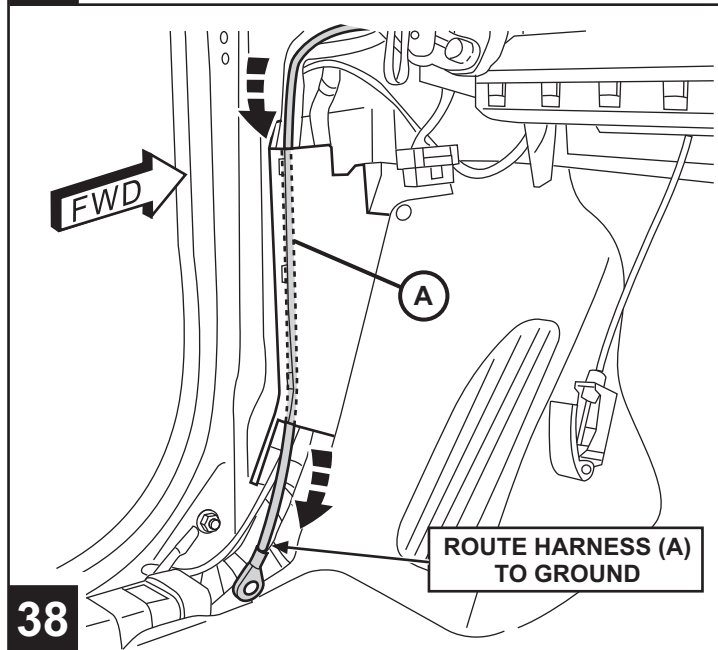
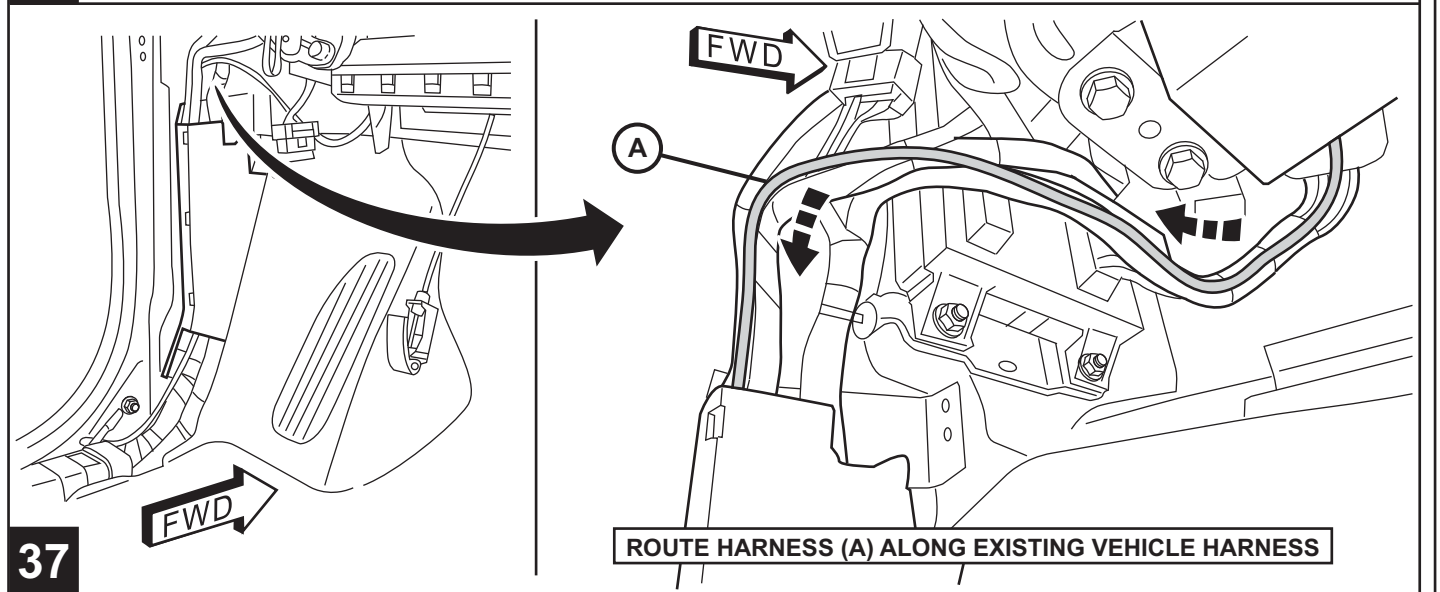
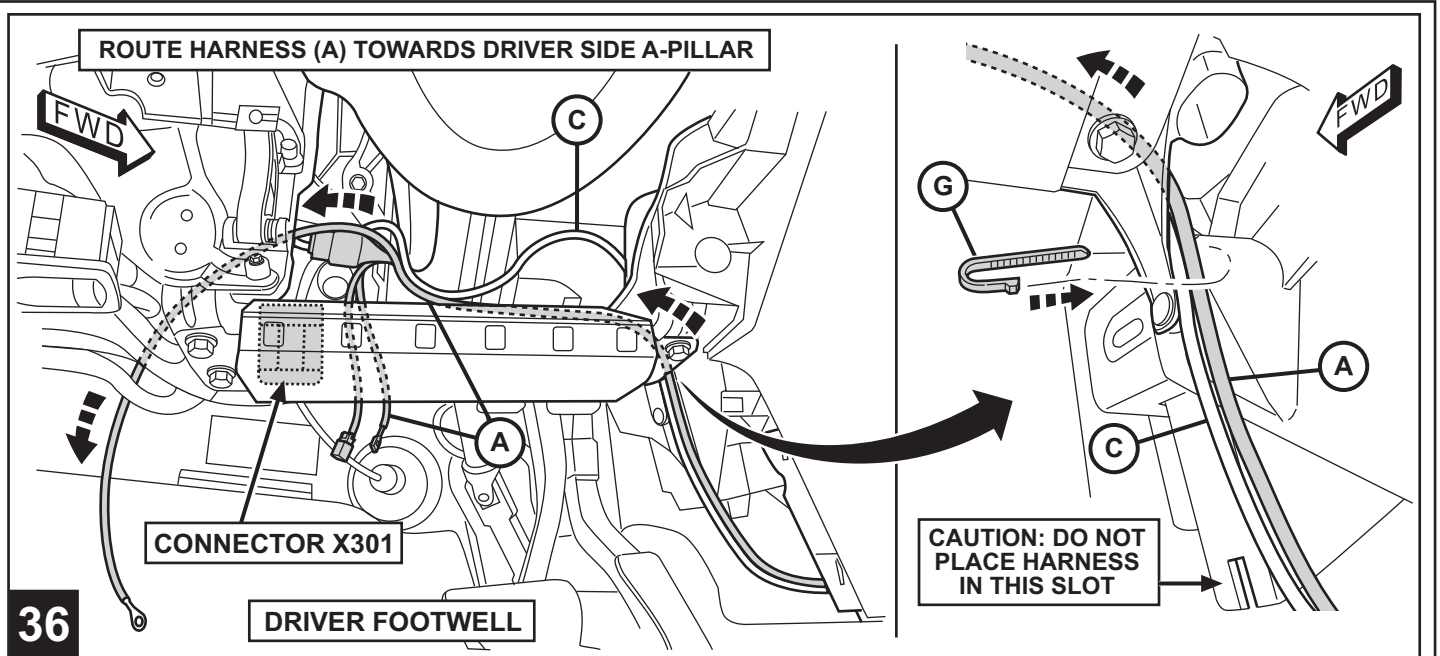
30

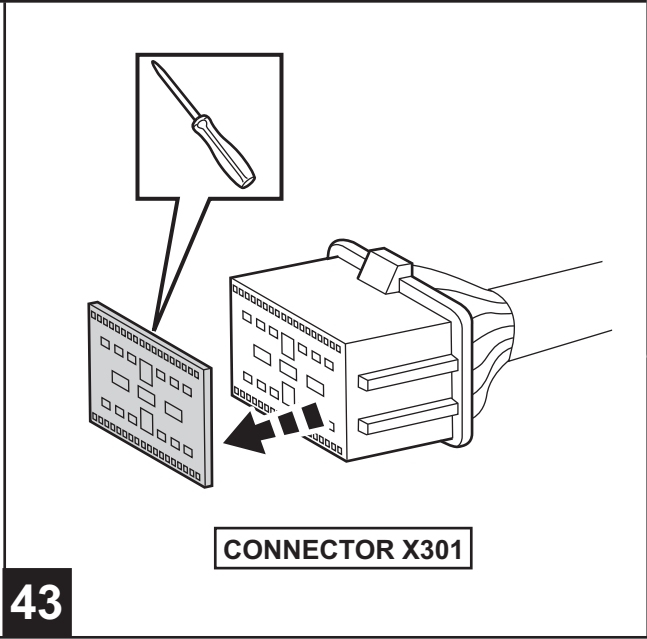
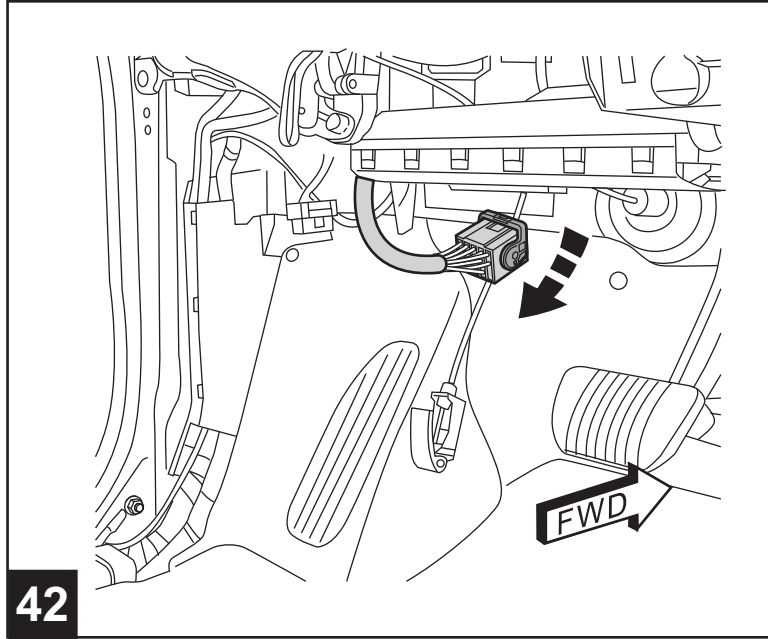
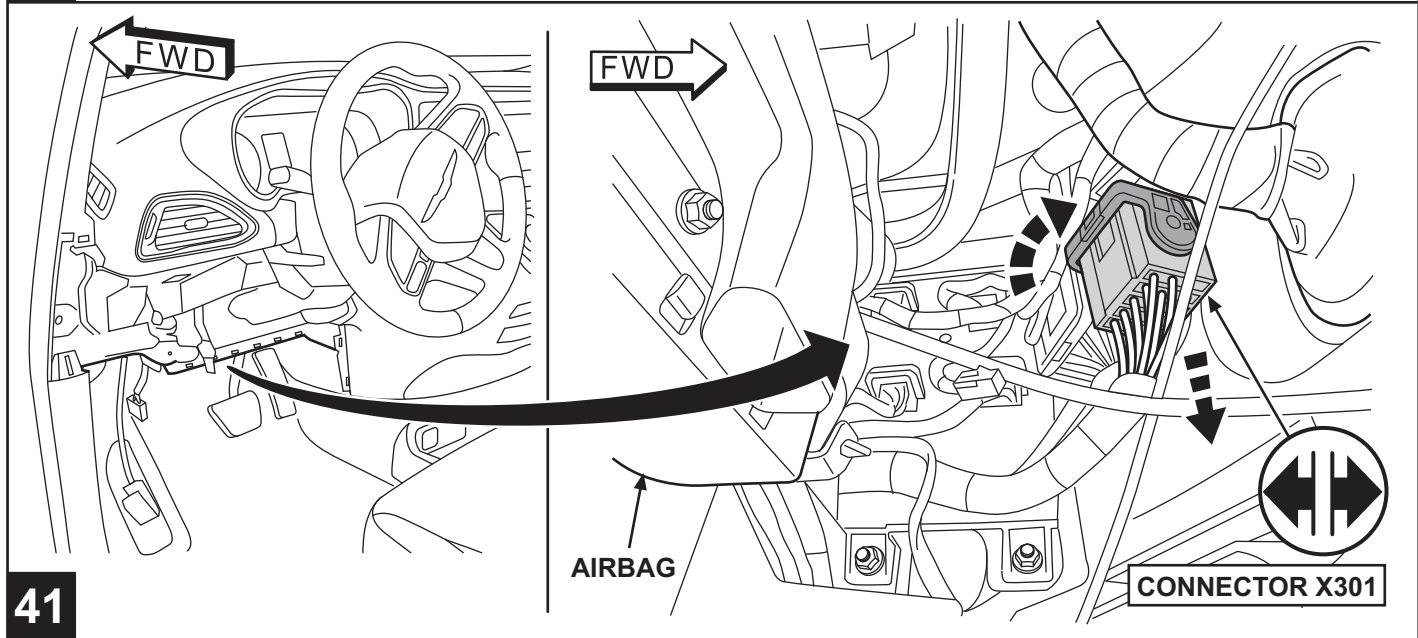
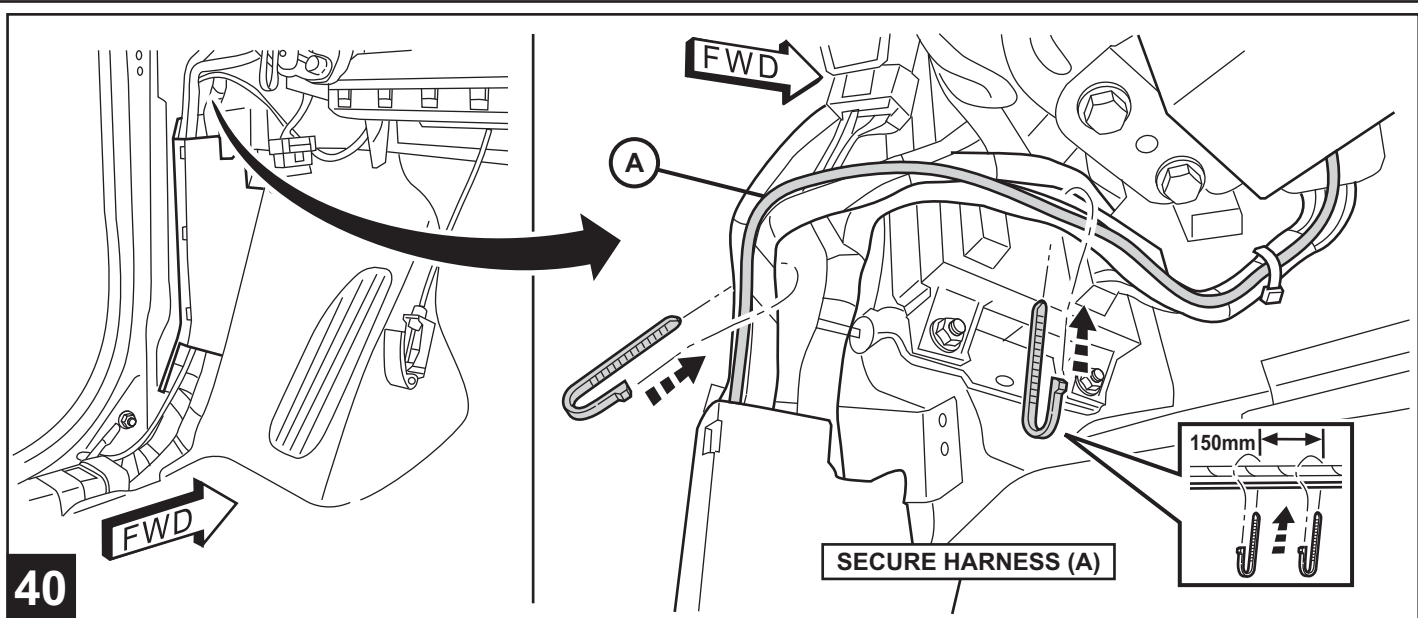



31

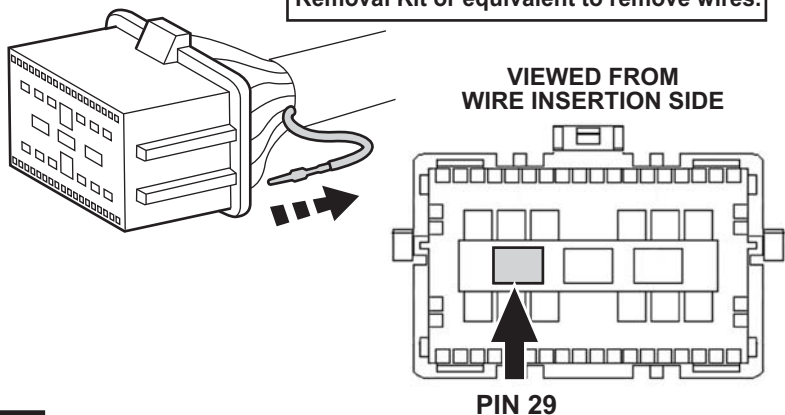






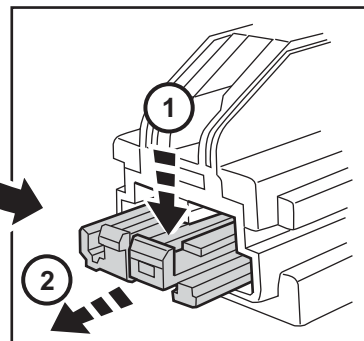



NOTE: Use Miller 6680 Connector Removal Kit or equivalent to remove wires.

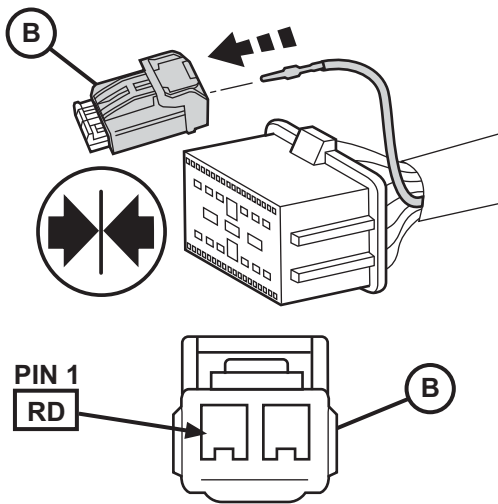


44

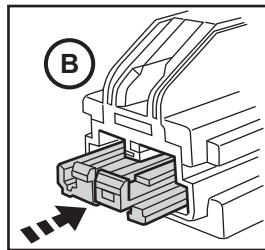
B 
NOTE: PRESS DOWN AND PULL OUT TO UNLOCK CONNECTOR (B)



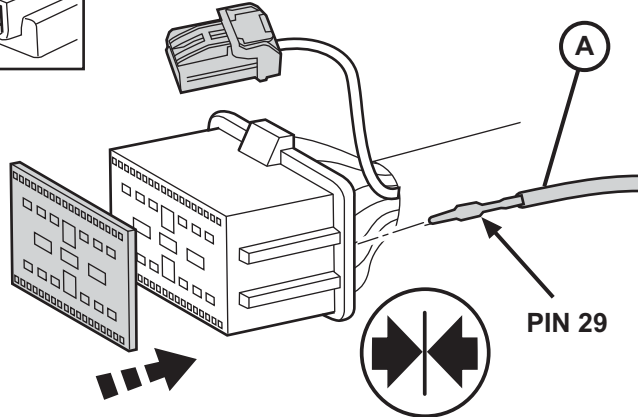
45



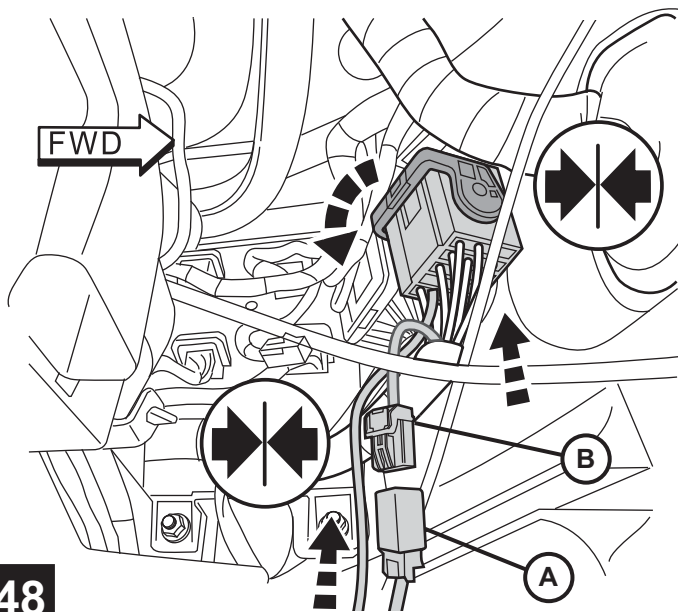
46



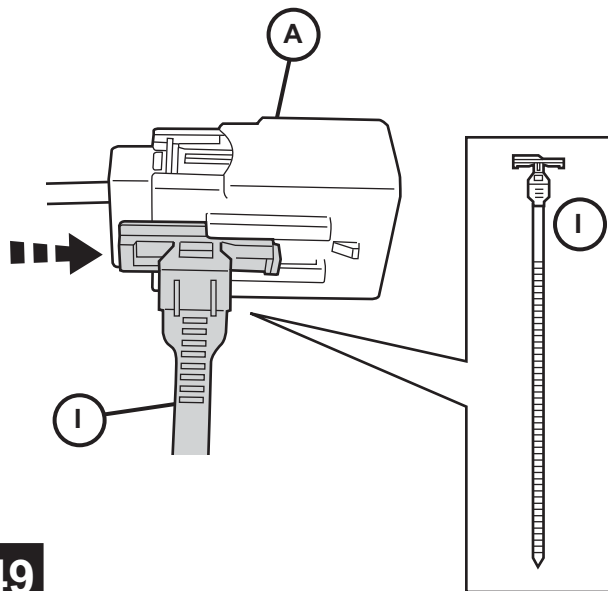
NOTE: PRESS LOCK TAB BACK IN TO SECURE WIRE



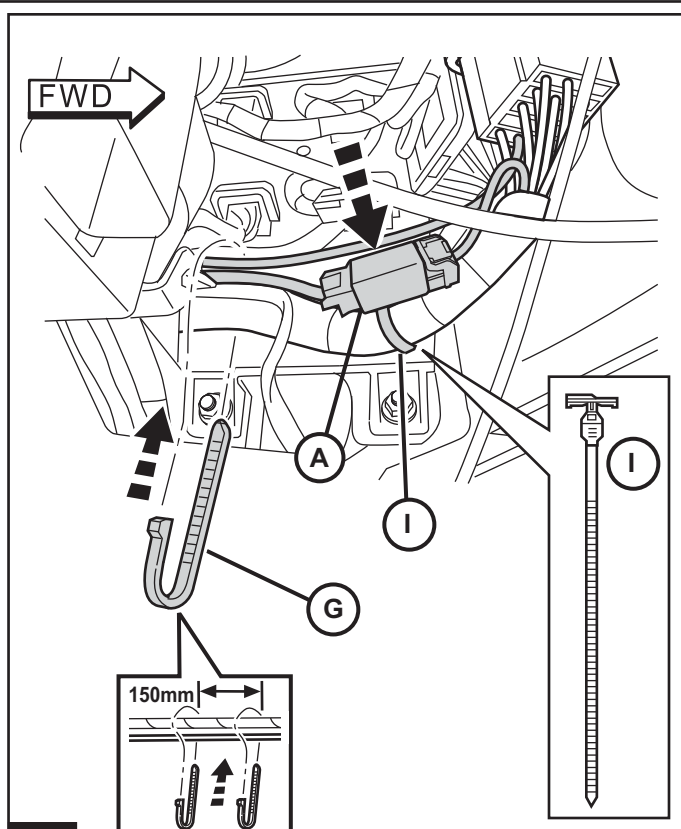
47



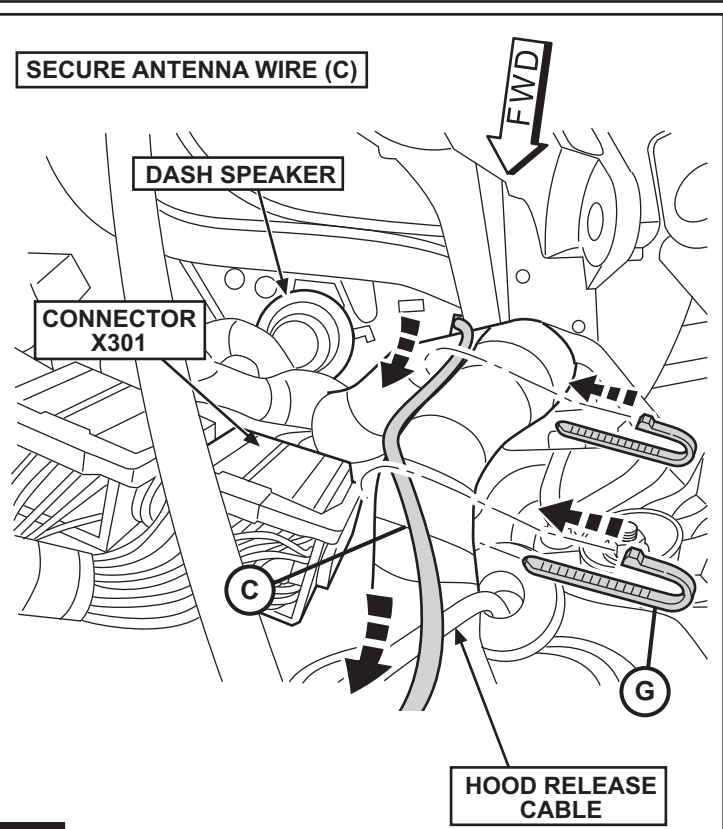
48



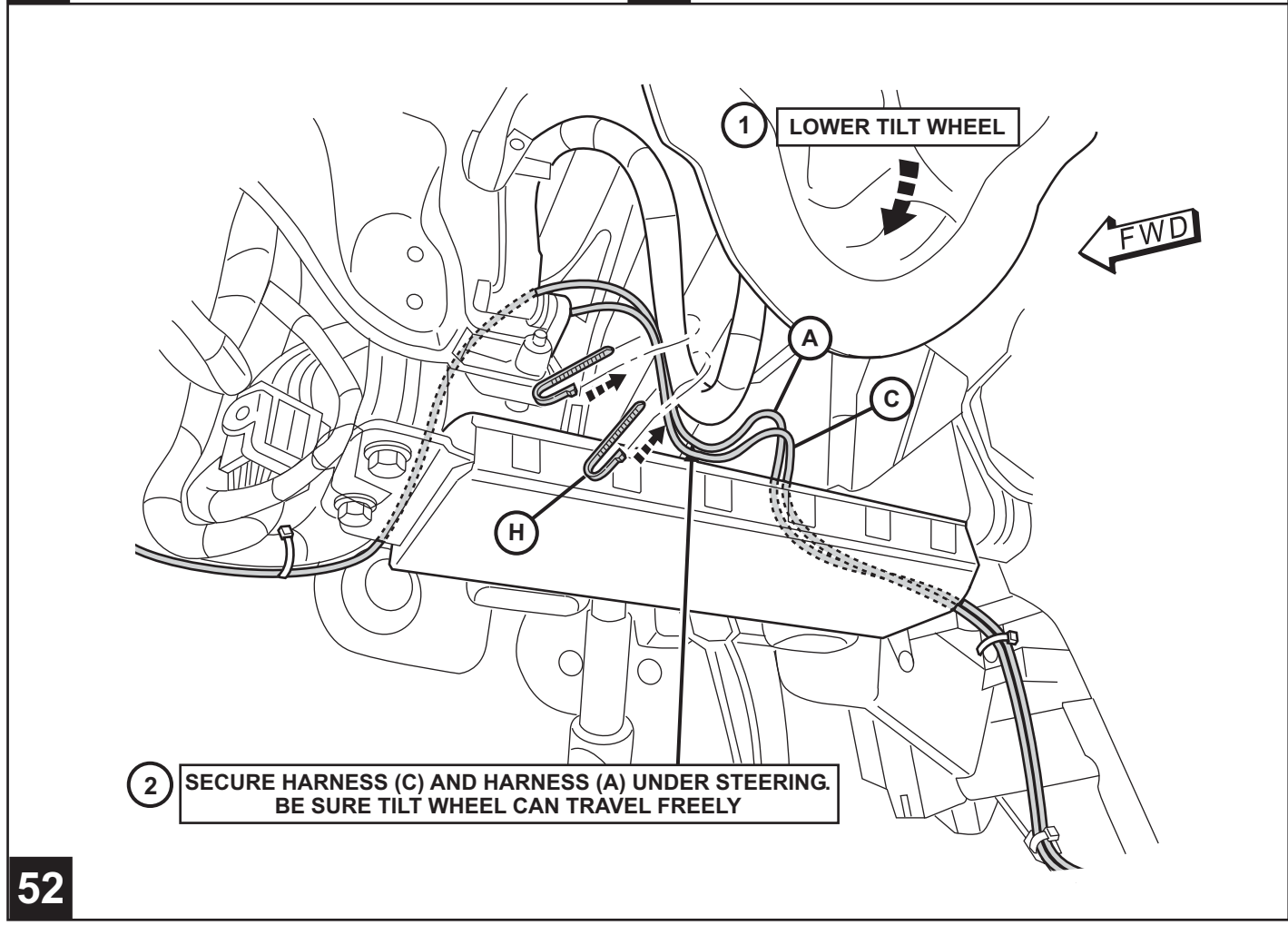
49



50



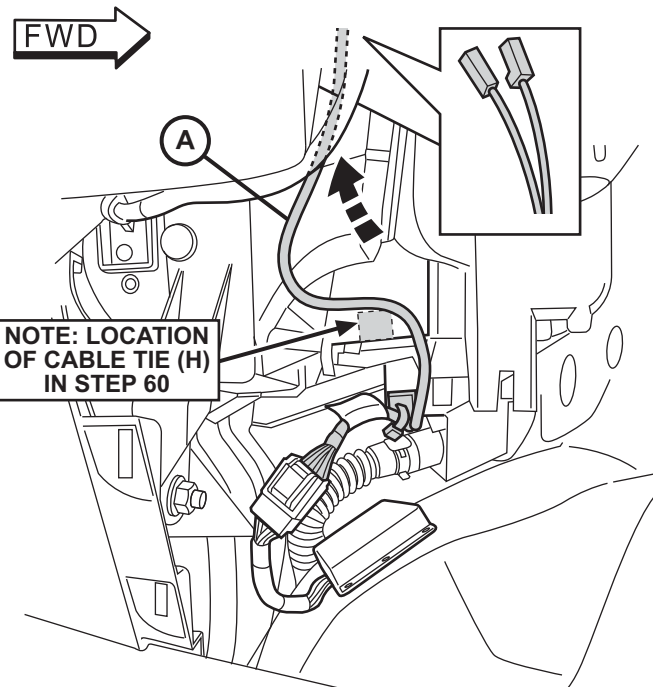
51



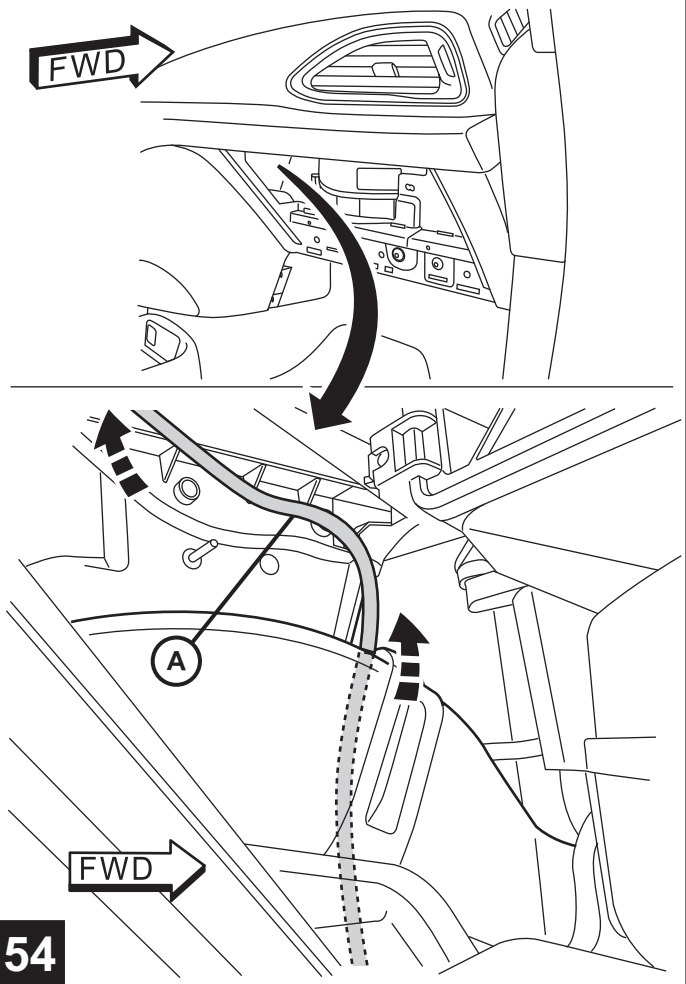
2 SECURE HARNESS (C) AND HARNESS (A) UNDER STEERING. BE SURE TILT WHEEL CAN TRAVEL FREELY

52

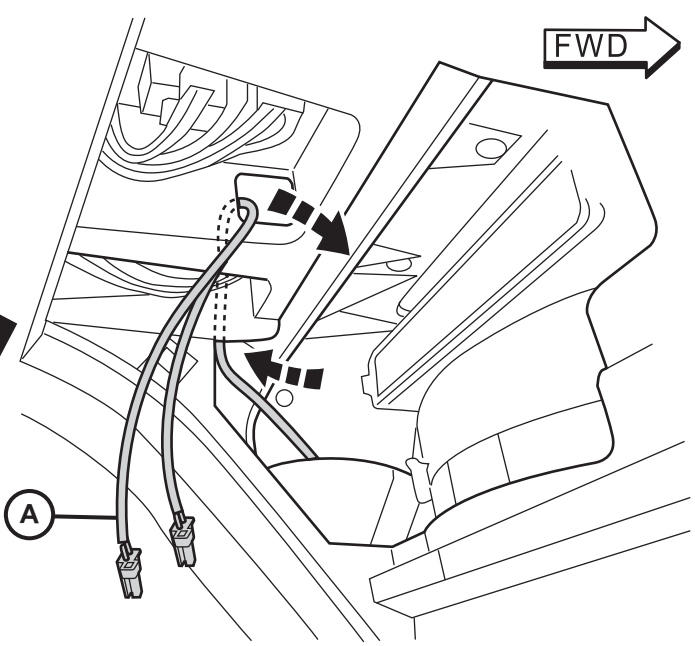
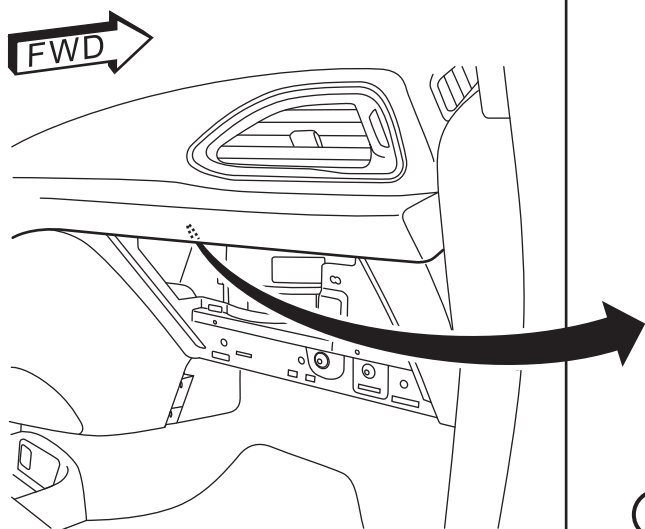
ROUTE HARNESS (A)
UP TOWARDS GLOVEBOX



53

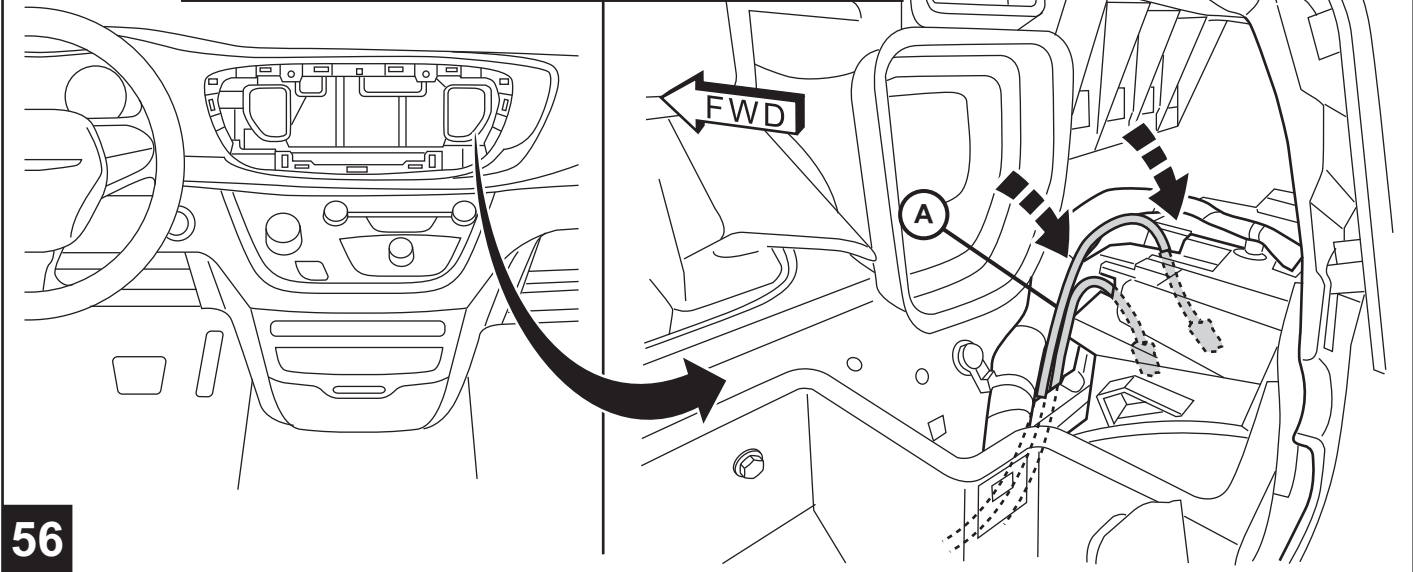


54



55

ROUTING OF HARNESS (A) VIEWED FROM RADIO OPENING

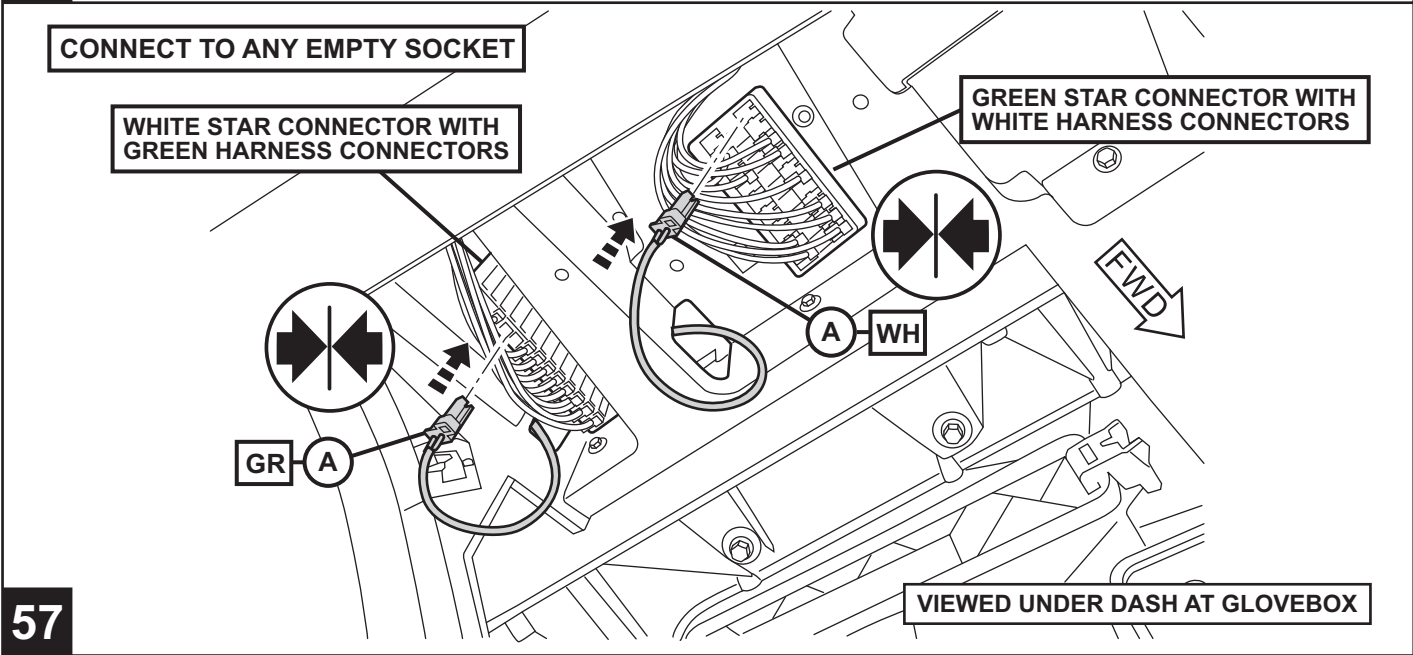


56

CONNECT TO ANY EMPTY SOCKET

WHITE STAR CONNECTOR WITH GREEN HARNESS CONNECTORS

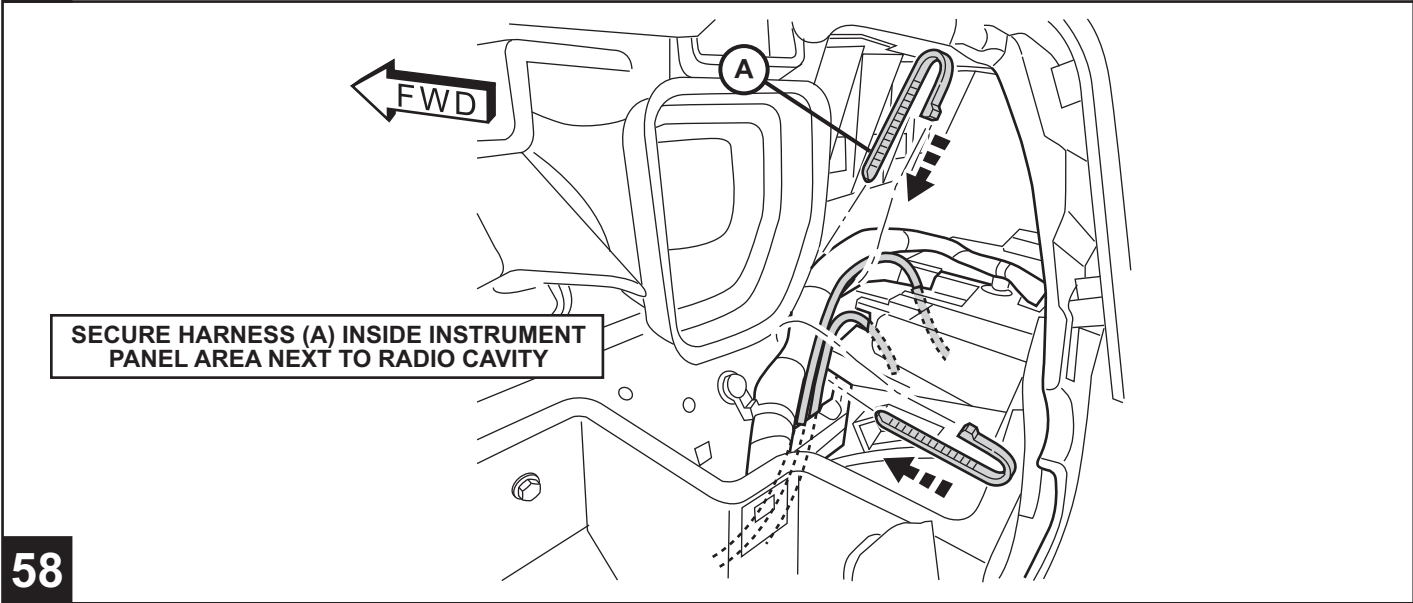
GREEN STAR CONNECTOR WITH WHITE HARNESS CONNECTORS



57

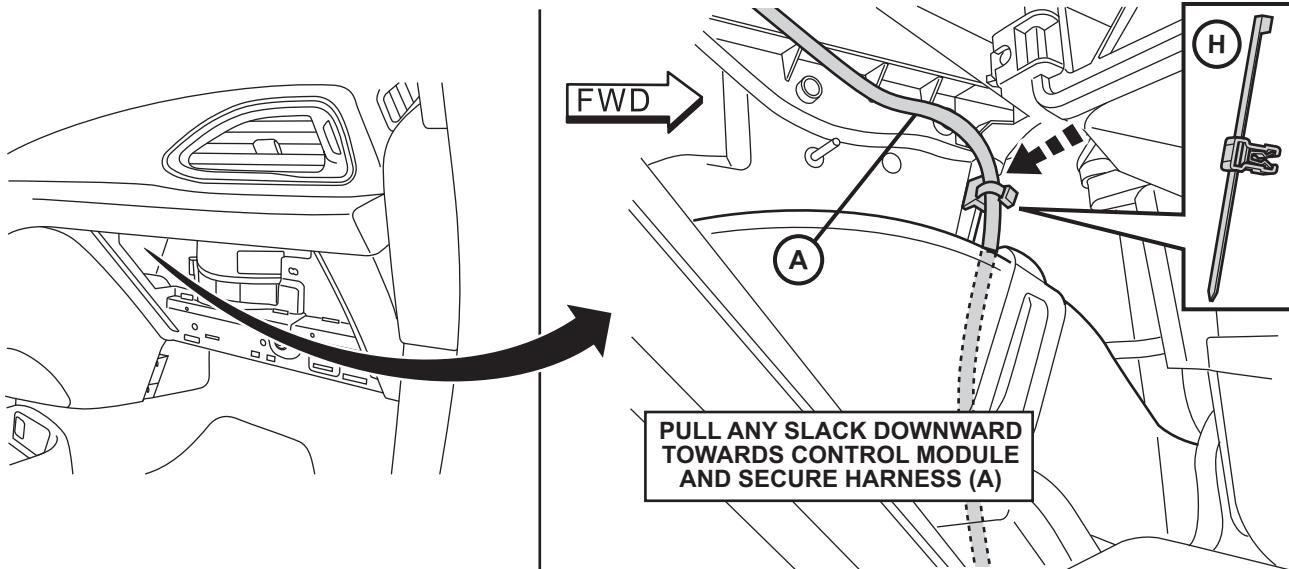
VIEWED UNDER DASH AT GLOVEBOX

SECURE HARNESS (A) INSIDE INSTRUMENT PANEL AREA NEXT TO RADIO CAVITY

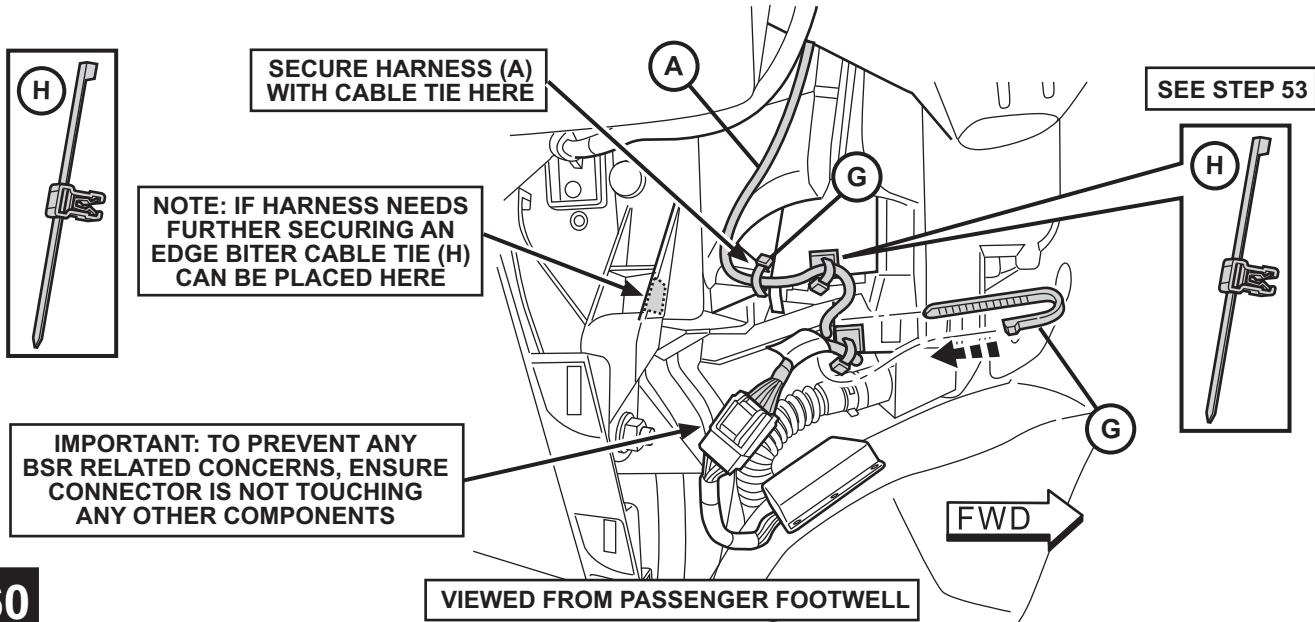


58

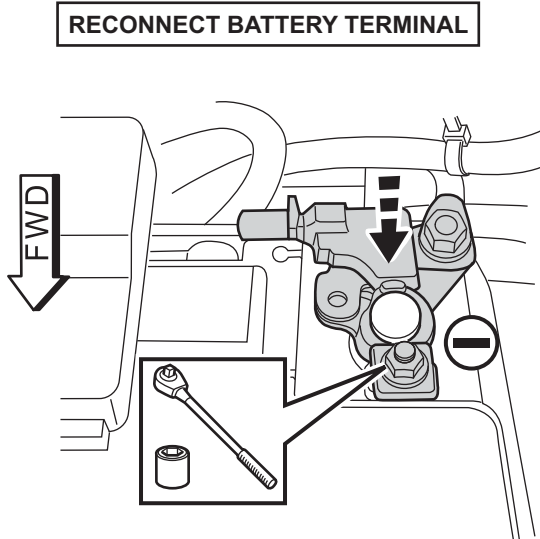
59



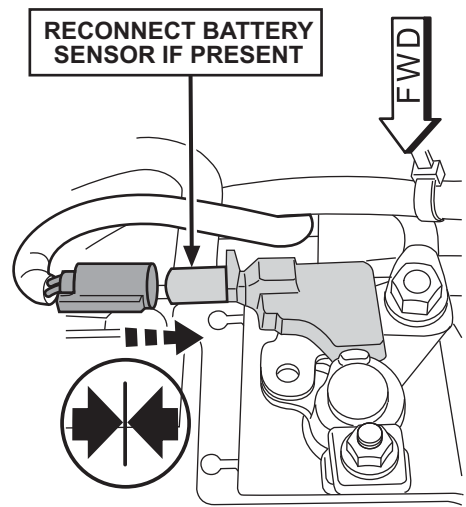
60



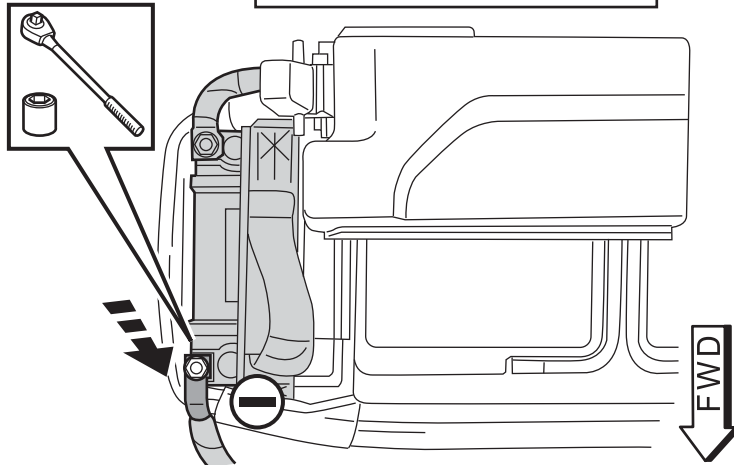
61



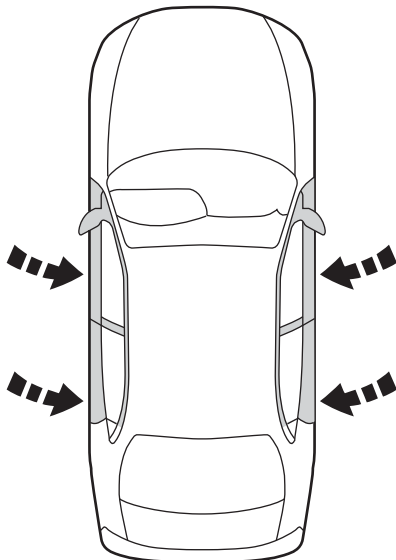
62



NOTE: RECONNECT AUXILIARY BATTERY IF PRESENT



63



64

**REFER TO END OF LINE (EOL)
TEST PROCEDURE
ON THE FOLLOWING PAGES**

65

Mopar Connect – End Of Line (EOL) Procedure

To be performed by the installer

The EOL procedure will verify proper function/installation of the Mopar Connect Module and Installation Kit in the vehicle.

Equipment Needed To Perform This Procedure:

- Laptop or PC with internet access
- Smart phone

NOTE: Some screens and commands may be different based on the smartphone operating system. For example, some smartphone operating systems require that you press “login” or “enter” to continue. If assistance is needed, please call Autonet Mobile Customer Care Center at 1-855-75MOPAR.

Questions regarding this procedure should be directed to
Autonet Mobile Customer Care Center at
1-855-75MOPAR

Testing the Mopar Connect Module After Installation In The Vehicle

1. Ensure that all doors have been closed on the vehicle for at least 3 minutes.
Have all doors been closed on the vehicle for at least 3 minutes?
 - a) **No**, go to Step 2.
 - b) **Yes**, go to Step 3.
2. Close all doors and wait 3 minutes before continuing to Step 3.
3. Open driver’s door and turn ignition switch to RUN position within 15 seconds of opening the driver’s door. If this is not completed within 15 seconds, go back to Step 2, otherwise, continue to next step.
4. Leave the ignition key in the RUN position for up to 3 minutes while the Mopar Connect module reads the VIN of the vehicle and re-writes the Network Name (SSID) that will be used in the next step.
5. After 3 minutes have elapsed, open the wireless network list on the smart phone, laptop, or PC. Look for a Network Name (SSID) that either says “**mopar-XXXX**” (where XXXX are the last 4 digits as the vehicle’s VIN) or “**autonet-NNNN**” (where NNNN are the last 4 digits of the Mopar Connect Module’s serial number). The serial number can also be found on the Activation Card that will be given to the customer.
 - a) If “**autonet-NNNN**” appears in the network list, continue to step 6.
 - b) If “**mopar-XXXX**” appears in the network list, connect to that network and continue to Step 7.
6. Turn ignition key to off position. Close driver’s door. Disconnect Mopar Connect module. Wait 15 seconds. Reconnect Mopar Connect Module. Go back to Step 3 and start over.

Mopar Connect – End Of Line (EOL) Procedure (continued)

7. Open the web browser on the device (smartphone, laptop or PC) and go to:
<http://www.autonetrouter.com/eol>

NOTE: Some screens and commands may be different based on the smartphone operating system. For example, some smartphone operating systems require that you press “login” or “enter” to continue. If assistance is needed, please call Autonet Mobile Customer Care Center at 1-855-75MOPAR.

If the following screen appears after opening the browser on the device or the browser redirects you to this screen:



Do not press Login, rather, in the URL Address Bar of the browser, type
<http://www.autonetrouter.com/eol>
 and press Enter.

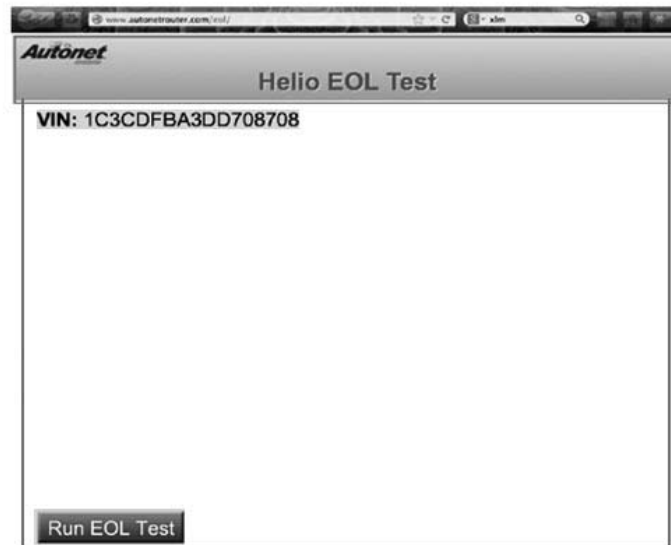
NOTE: Some screens and commands may be different based on the smartphone operating system. For example, some smartphone operating systems require that you press “login” or “enter” to continue. If assistance is needed, please call Autonet Mobile Customer Care Center at 1-855-75MOPAR.

If the following screen appears while trying to access the URL above, go back to Step 5 and start over, otherwise, continue to the next Step.



Mopar Connect – End Of Line (EOL) Procedure (continued)

8. Successful access to <http://www.autonetrouter.com/eol> will display the following screen: (VIN may or may not be present)



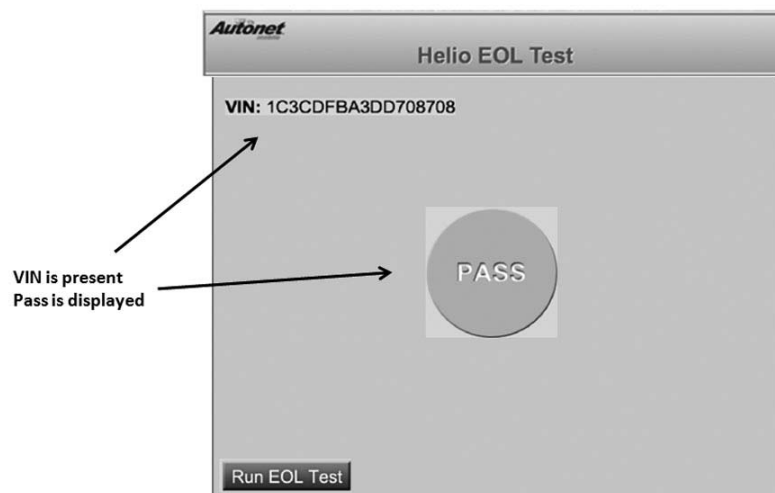
9. The EOL test consists of two parts:

- a) Verification of proper connection of the Mopar Connect module to the vehicle's CAN bus as indicated by the displaying of the vehicle's VIN on the browser screen.
- b) Verification of communication via network/WiFi as indicated by the Pass/Fail message in the center of the screen when the EOL test is executed from the browser screen.

For proper function of the Mopar Connect module, both parts (9a and 9b) of the EOL test must pass.

10. Click on the button "Run EOL test"

11. If both parts of the EOL test passes, the following will be displayed:

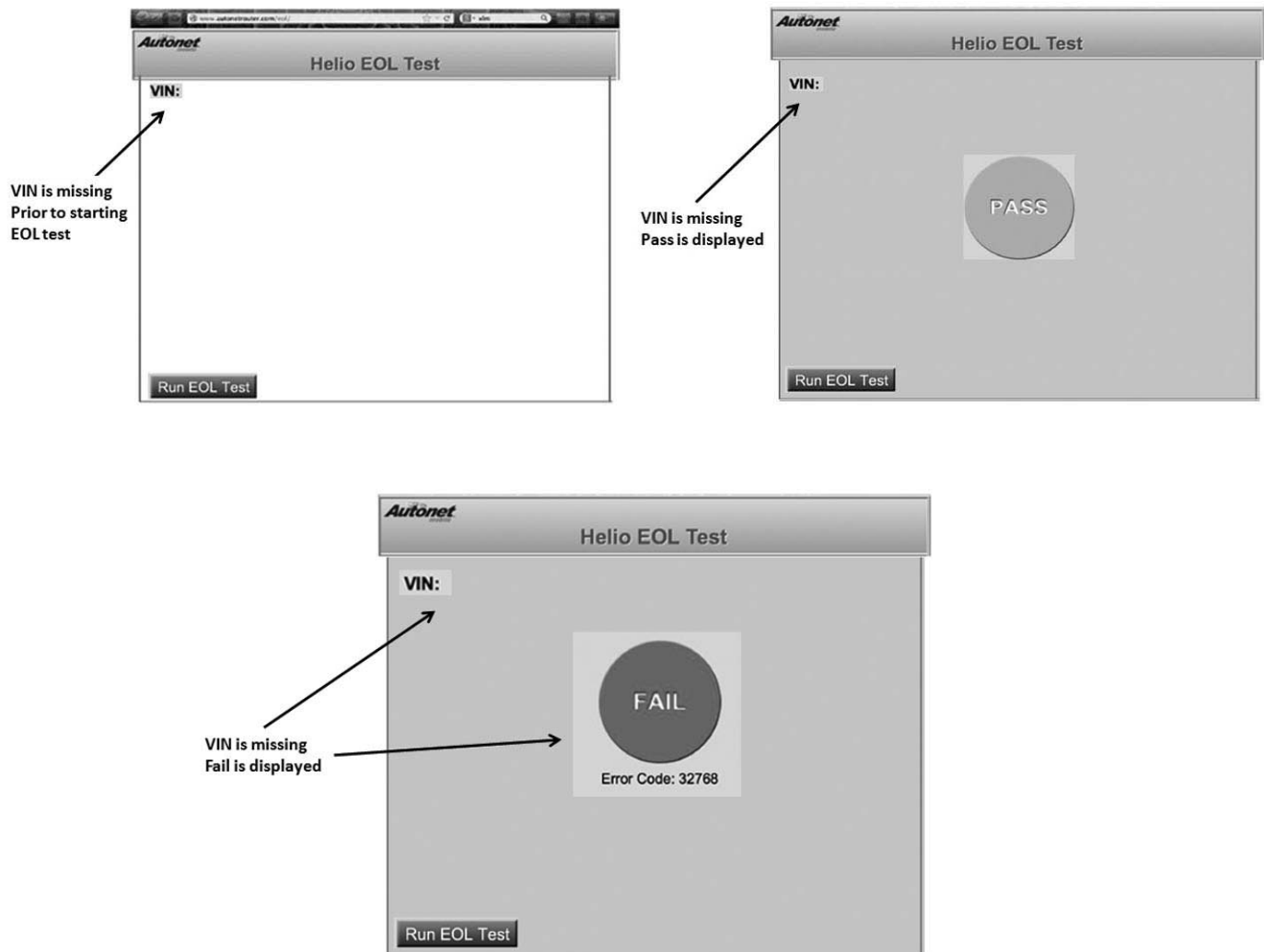


Mopar Connect – End Of Line (EOL) Procedure (continued)

If both parts of the EOL test pass, then EOL testing is complete. Otherwise, continue to Step 12.

12. If one or both parts of the EOL test fail, any of the following screens can be displayed:

NOTE: It is possible to fail one part and pass the other. For example, a green color Pass indicator on the center of the browser screen, but VIN missing on the browser screen does not signify a successful pass of the EOL test. See example below.



- A missing VIN indicates that the Mopar Connect is not properly connected to the vehicle's CAN bus.
- A red color Fail status displayed indicates that the network/WiFi portion of the EOL test failed.

Mopar Connect – End Of Line (EOL) Procedure (continued)

For all other errors or for further assistance,
contact the Autonet Mobile Customer Care Center at

1-855-75MOPAR

and provide the Customer Care Agent with
the error code that is displayed on the screen.

**CHECK ALL WIRING AND
TRIM ALL CABLE TIES.**

**REVERSE STEPS 5 THROUGH 19
TO REINSTALL ALL BODY PANELS
AND COMPONENTS.**

**AFTER FINAL ASSEMBLY,
CLEAR ALL FAULT CODES**

**GIVE ACTIVATION CARD TO CUSTOMER
FOR FINAL ACTIVATION PROCEDURE.**

66

67